




# ESHRE 40th Annual Meeting

 Amsterdam, The Netherlands  
7-10 July 2024





# Welcome to Amsterdam







# ESHRE 2024 - Web pages

Information available on:

<https://www.eshre.eu/ESHRE2024>

The screenshot shows the ESHRE website homepage for the 40th Annual Meeting. The header features the ESHRE logo and the text 'European Society of Human Reproduction and Embryology'. The main banner is a vibrant image of biological tissue with the text 'ESHRE 40th Annual Meeting' in large green letters. Below this, it states 'Amsterdam, The Netherlands 7-10 July 2024' and '#ESHRE2024'. A 'View programme >' button is present. A navigation bar includes links for 'GENERAL INFO', 'PROGRAMME', 'REGISTRATION', 'PLAN YOUR TRIP', and 'EXHIBIT AND SPONSORS'. A central section titled 'ESHRE annual meeting 2024 in Amsterdam -Welcome !' features a photo of a modern building and a paragraph of text. A 'Read the welcome word of Mariëtte Goddijn & Edith Coonen >' button is located below the text. At the bottom, a dark blue section titled 'VIEW THE PRELIMINARY PROGRAMME' contains a paragraph of text and a 'VIEW HERE' button.



# ESHRE 2024 - Website

## **Beware of cyber squatting!**

The only trusted ESHRE website is:

<https://www.eshre.eu>

<https://www.eshre.eu/Annual-Meeting/ESHRE-2024>

<https://www.eshre.eu/ESHRE2024>

**In case of doubt, please contact us!**

Our official housing agent → RAI Amsterdam Hotel Services:

Official housing site & booking form on

<https://book.raihotelservices.com/CommunityPortal/ProgressivePortal/ESHRE24/App/Views/InformationPage/View.aspx?InformationPageID=938>

The congress venue RAI:

<https://www.rai.nl/en>

Ovation Holland for organising events during the congress

<https://ovationdmc.com/destinations/holland> and [Emelie.Paulsson@ovationdmc.com](mailto:Emelie.Paulsson@ovationdmc.com)







# ESHRE 2024 - The venue



**ESHRE2024 will be held at:**

**RAI AMSTERDAM**

**Europaplein 24, 1078 GZ Amsterdam, The Netherlands**

**Virtual tour:**

**<https://www.rai.nl/en/the-location/virtual-tour>**

**Floor plans:**

**<https://www.rai.nl/en/the-location/floor-plan>**



# Exhibit at ESHRE 2024





# ESHRE 2024 – Booth types

**The following booth types will be offered:**

## **FLOOR SPACE ONLY** (up to max. 288m<sup>2</sup>)

- Is a booth space without a shell scheme
- It is the Exhibitor's responsibility to take care of the design, set-up, installation, cleaning and dismantling of the booth

## **FLOOR SPACE + SHELL SCHEME** (up to max. 27m<sup>2</sup>)

- Is a booth space including a shell scheme
- It is designed for exhibitors who do not design and construct their own stand
- It is set up, cleaned and dismantled by the congress venue

-> Please note that your booth space should be separated from your neighbouring exhibitors by means of a wall

-> Furniture, graphics, extra electricity, etc. are at an additional cost and can be rented through the webshop of the congress venue (available in February 2024)

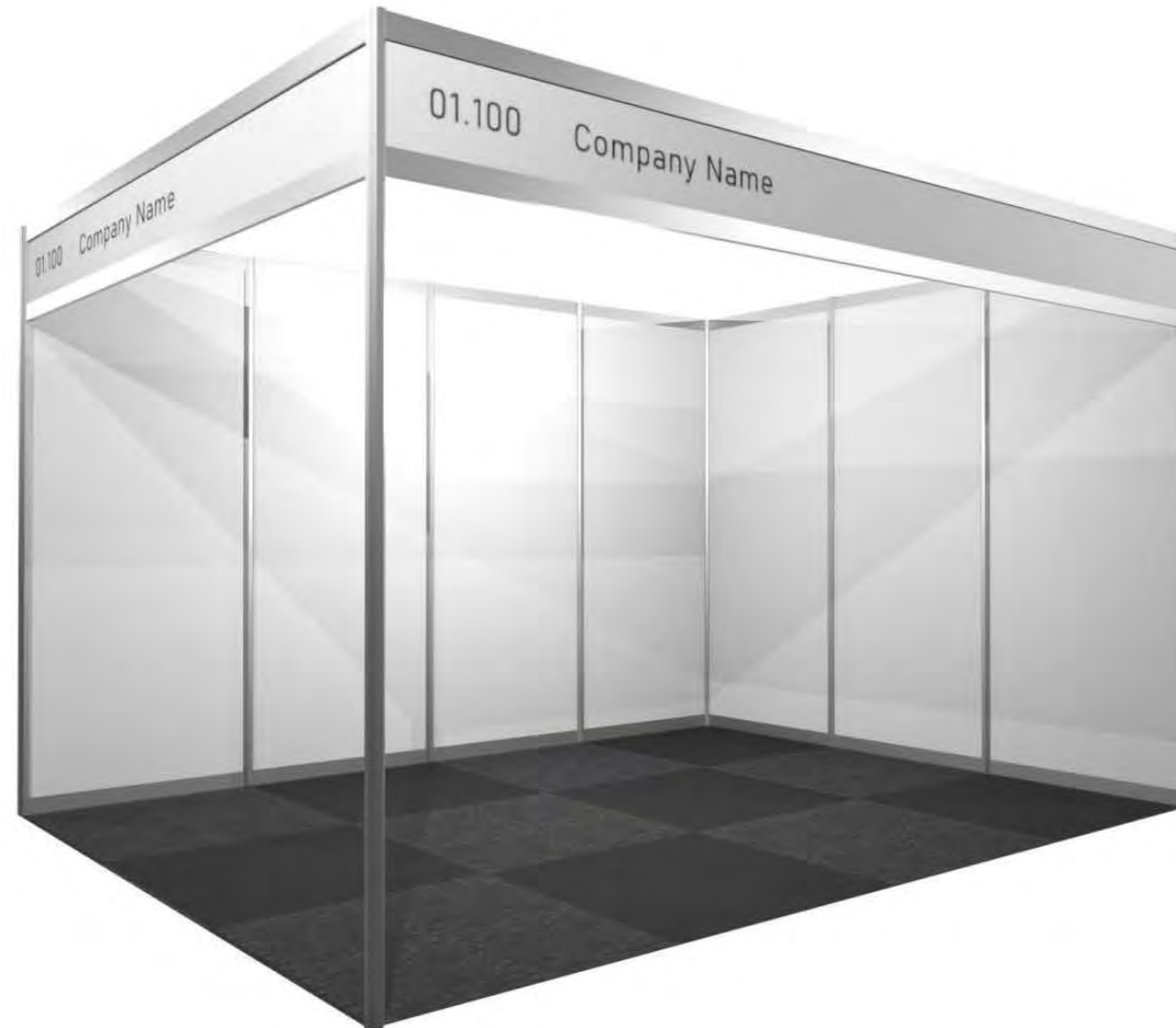
### **The SHELL SCHEME includes:**

- White wall panels L100 x H250 cm
- Carpet tiles (anthracite grey)
- Facia board with company name on each open side
- Spotlights 1 per 4m<sup>2</sup> (11 watt)
- Daytime power 3 kW (incl. double wall socket) 1 ea
- Build-up and dismantling
- Daily cleaning inside the booth before the opening hours (floor cleaning and emptying bins)





# ESHRE 2024 - Visual shell scheme







# ESHRE 2024 - Booth fees

Booth type	Floor space only Euro per m <sup>2</sup> , excl. VAT	Floor space + shell scheme Euro per m <sup>2</sup> , excl. VAT
Inline booth (i.e. 1 side open towards aisle)	415€	499€
Corner booth (i.e. 2 sides open towards aisle)	435€	542€
Peninsula booth (i.e. 3 sides open towards aisle)	456€	549€
Island booth (i.e. 4 sides open towards aisle)	476€	/

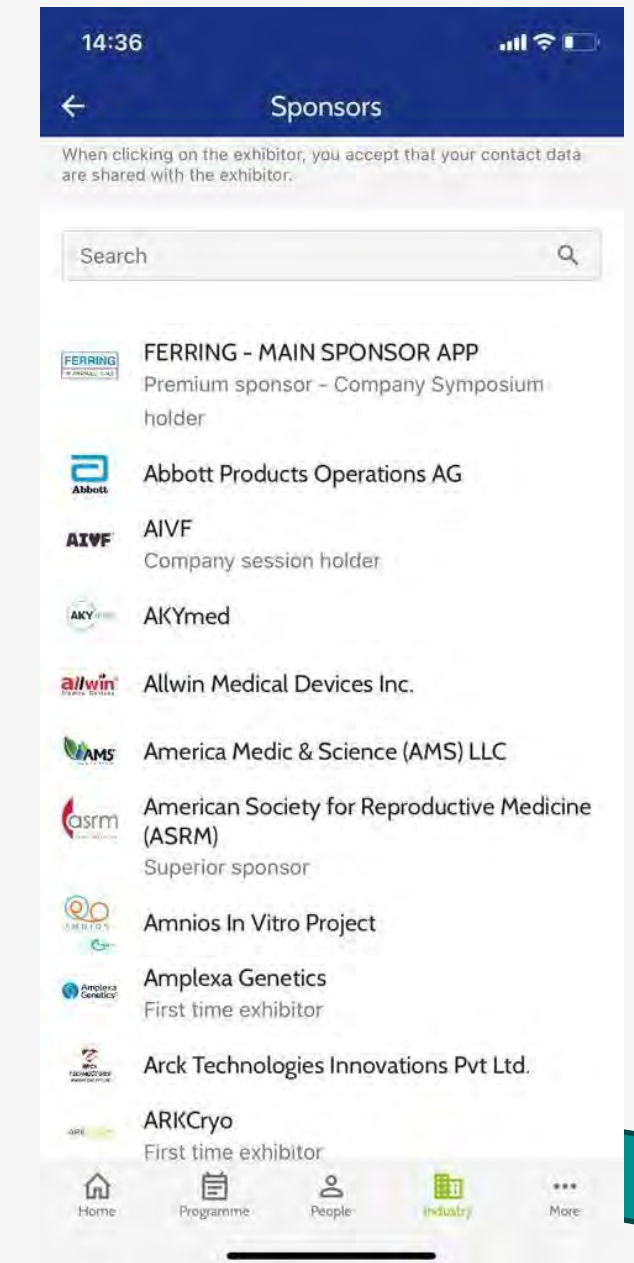
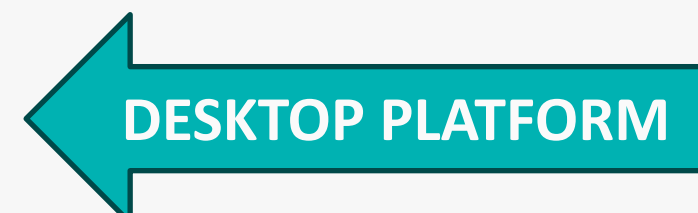
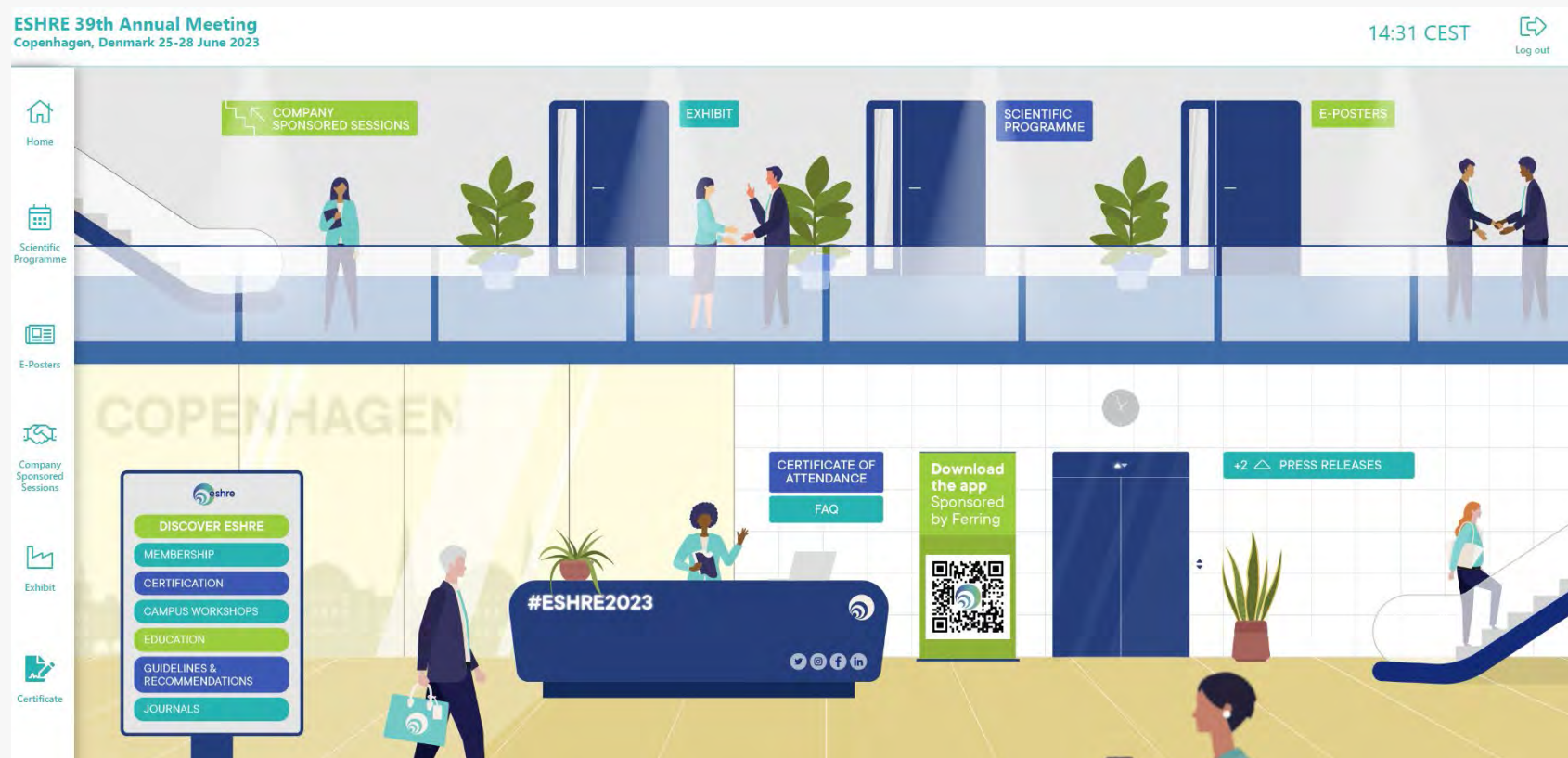
Furniture, graphics, electricity, etc. are at an additional cost and can be rented in the webshop of the congress venue

# ESHRE 2024 – Virtual Exhibitor Page

A virtual exhibitor page is included in the space rental based on the square metres that you are booking:

- Basic package for floor spaces from 9m<sup>2</sup> to 99m<sup>2</sup>
- Superior package for floor spaces from 100m<sup>2</sup> to 198m<sup>2</sup>
- Premium package for floor spaces from 199m<sup>2</sup> to 288m<sup>2</sup>

The virtual exhibitor page will be available on the desktop platform and in the congress app of the Annual Meeting.



The Congress APP





# ESHRE 2024 – Exhibitor benefits

## Exhibit – what's included?

- Exposure at all exhibit hall events:
  - Welcome Reception on Sunday evening 7 July 2024 from 20:00 to 22:00
  - 3 lunch breaks and 5 coffee breaks
- Exclusive hours with no competing scientific sessions during the Welcome Reception, lunch and coffee breaks
- Complimentary lunch and coffee for exhibitors
- Stand holders are entitled to a number of free badges depending on the booth size





# ESHRE 2024 – How to book a booth space

## ONLINE BOOKING FORM

You can book your booth space through <https://www.eshre.eu/ESHRE2024/Exhibit-and-Sponsors/Exhibition-order-form>

### IMPORTANT:

- You need to log in to get access to the form
- In case you don't have an account yet, then please create your personal account via the following link: <https://www.eshre.eu/ESHRE/CreateAccount#createaccount>
- In case you have forgotten your password, then you can renew your password <https://www.eshre.eu/ESHRE/forgot-password.aspx#forgotpassword>

Should you encounter any login difficulties, feel free to reach out to us at [exhibit@eshre.eu](mailto:exhibit@eshre.eu)



# ESHRE 2024 – Badges Stand holders

Stand holders are entitled to a number of free Exhibitor badges and Full programme badges, depending on the size of the exhibit space.

Summary table outlining free exhibitor and full programme badges

Booth size	Free Exhibitor badges	Free Full programme badges
9 m <sup>2</sup>	2	1
10-18 m <sup>2</sup>	4	1
19 – 44 m <sup>2</sup>	8	1
45 – 71 m <sup>2</sup>	16	2
72 – 90 m <sup>2</sup>	26	2
91 – 152 m <sup>2</sup>	35	3
153 – 200 m <sup>2</sup>	45	4
201 – 288 m <sup>2</sup>	60	4



# ESHRE 2024 – Badges Stand holders

## Free & payable Exhibitor badges

### FREE EXHIBITOR BADGES

- give in-person and virtual access to the exhibition and to the sponsored sessions held in real-time for the duration of the sessions
- give on-demand access to the virtual exhibit and sponsored sessions (for 5 months after the meeting has been held)
- These badges do not include access to the official scientific programme (i.e. precongress courses and main programme)

### PAYABLE EXHIBITOR BADGES

- If you would like to order additional exhibitor badges on top of the free badges, then the price is 129 Euro excl. VAT per exhibitor badge
- Visitors Exhibit who don't get a discount badge from a stand holder have to book a Visitor Exhibit badge which costs 310 Euro excl. VAT





# ESHRE 2024 – Badges Stand holders

## Free & payable Full programme badges

### FREE FULL PROGRAMME BADGES

- give in-person and virtual access to the scientific programme (excl. precongress Courses), sponsored sessions and exhibition held in real-time for the duration of the congress
- give on-demand access to the virtual meeting platform for 5 months after the meeting has taken place

### PAYABLE FULL PROGRAMME BADGES

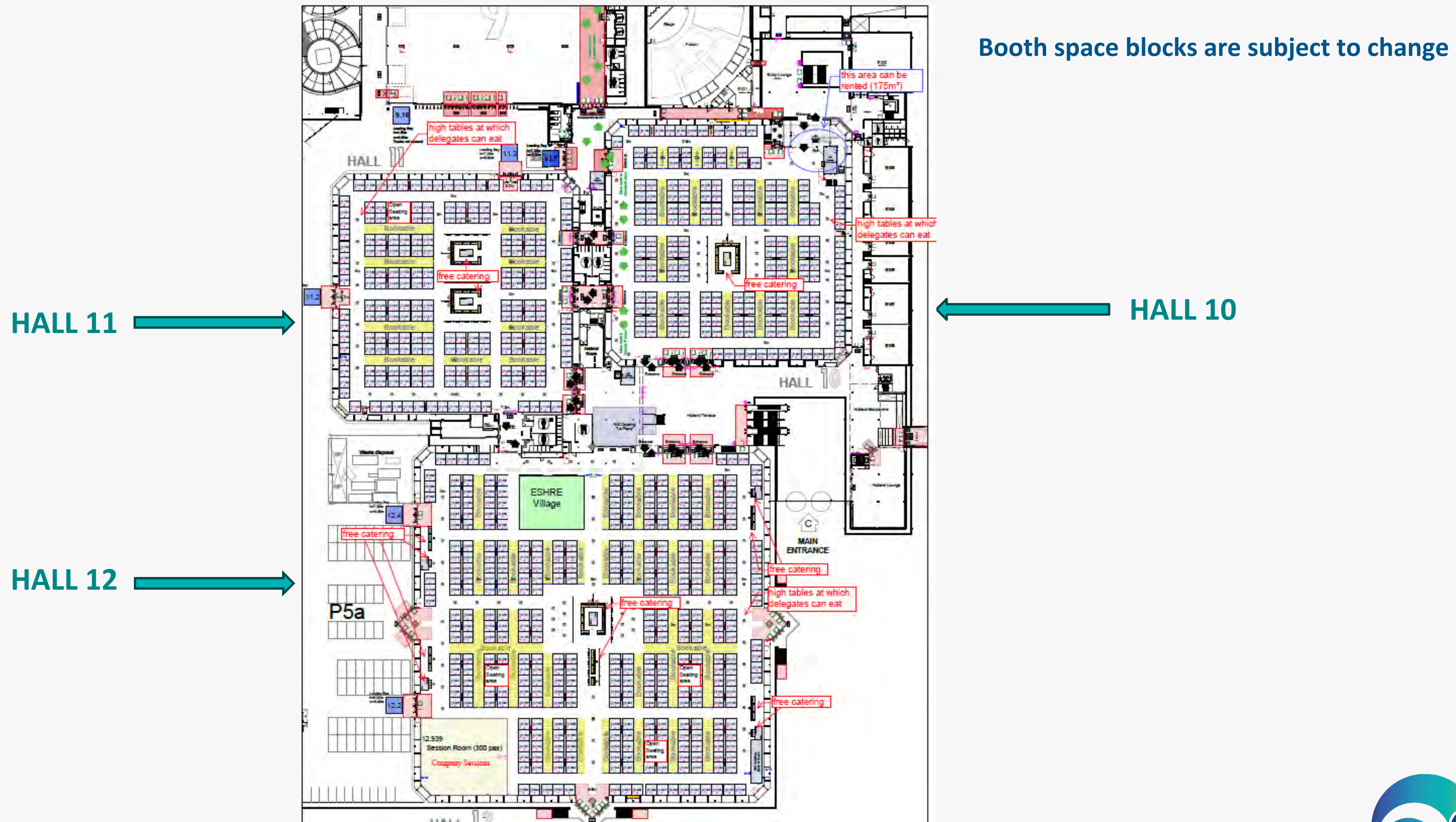
- If you would like to order additional Full programme badges on top of your free programme badge(s), then you can order these on [Registration ESHRE Annual Meeting](#) (Individual registration or Group registration if more than 10 people)

Stand holders will receive a link from ESHRE to order their free (and payable) exhibitor badges at a later stage.





# ESHRE 2024 - Exhibit plan Halls 10-11-12







# ESHRE 2024 - Exhibit



## Building restrictions booths

- Minimum exhibit space = 9 m<sup>2</sup> - Maximum exhibit space = 288 m<sup>2</sup> (i.e. total of 32 units of 9 m<sup>2</sup>)
- You are allowed to book a maximum of two distinct booth spaces in the same hall  
In that case the second booth must be placed opposite to your first one
- Booking a booth space in two different halls is not allowed
  
- Maximum building height Island booths: 4 metres - Maximum building height Inline, Corner and Peninsula booths: 2,5 metres (back and side walls)
- Hanging banners: The lowest point of the hanging banner has to be positioned at 4.5 meters above the floor. The hanging banners can have a maximum measurement of 1.5m, which brings the overall possible maximum height up 6 metres
- Walls: In order to create an open exhibition environment, only 1/3 of each stand's side facing an aisle can be covered by a wall

All custom-made booth plans will need to be reviewed and approved by ESHRE.

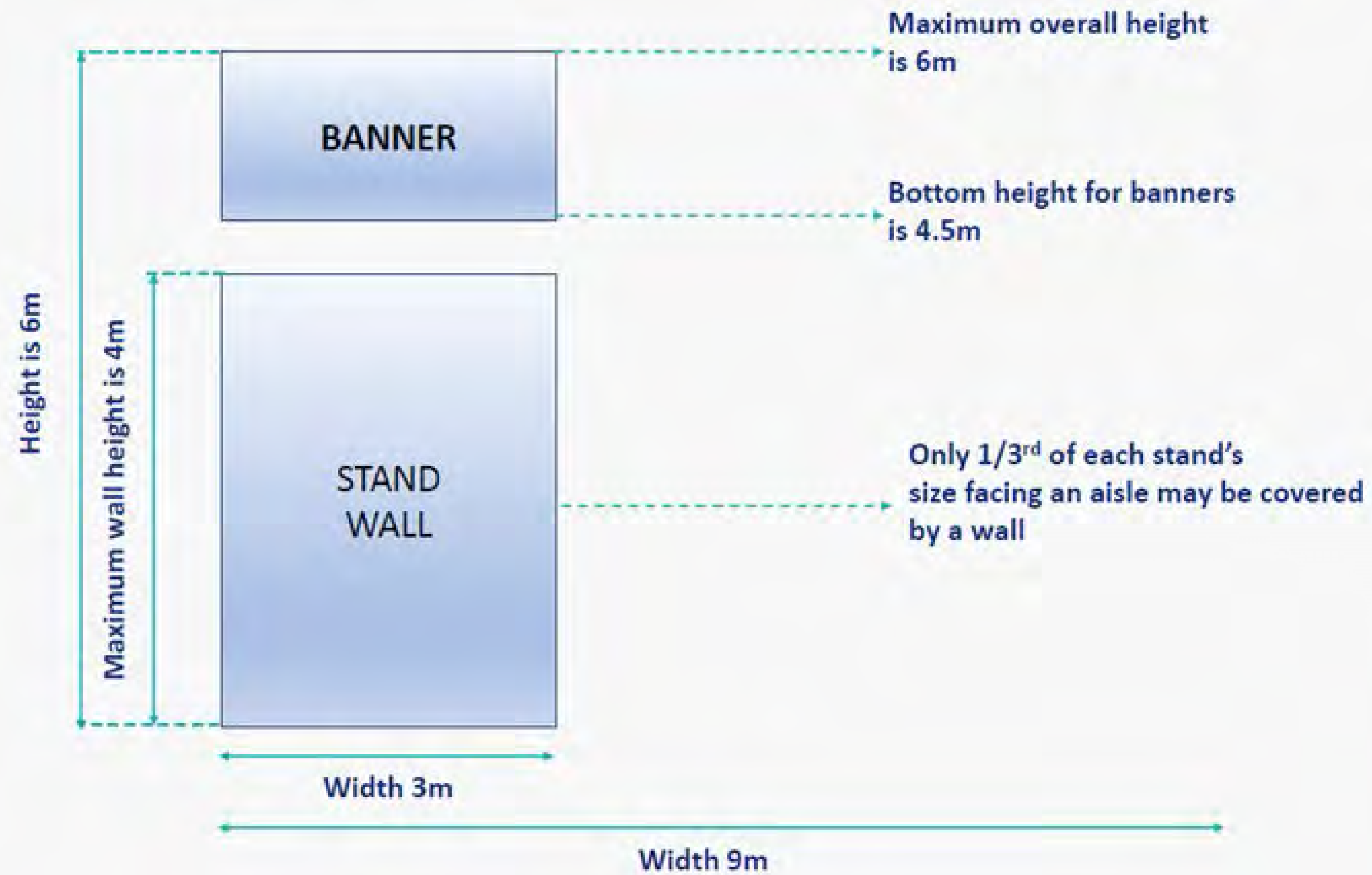
**Booth plans should be sent to [exhibit@eshre.eu](mailto:exhibit@eshre.eu) before 6 May 2024.**





# ESHRE 2024 – Building Restrictions

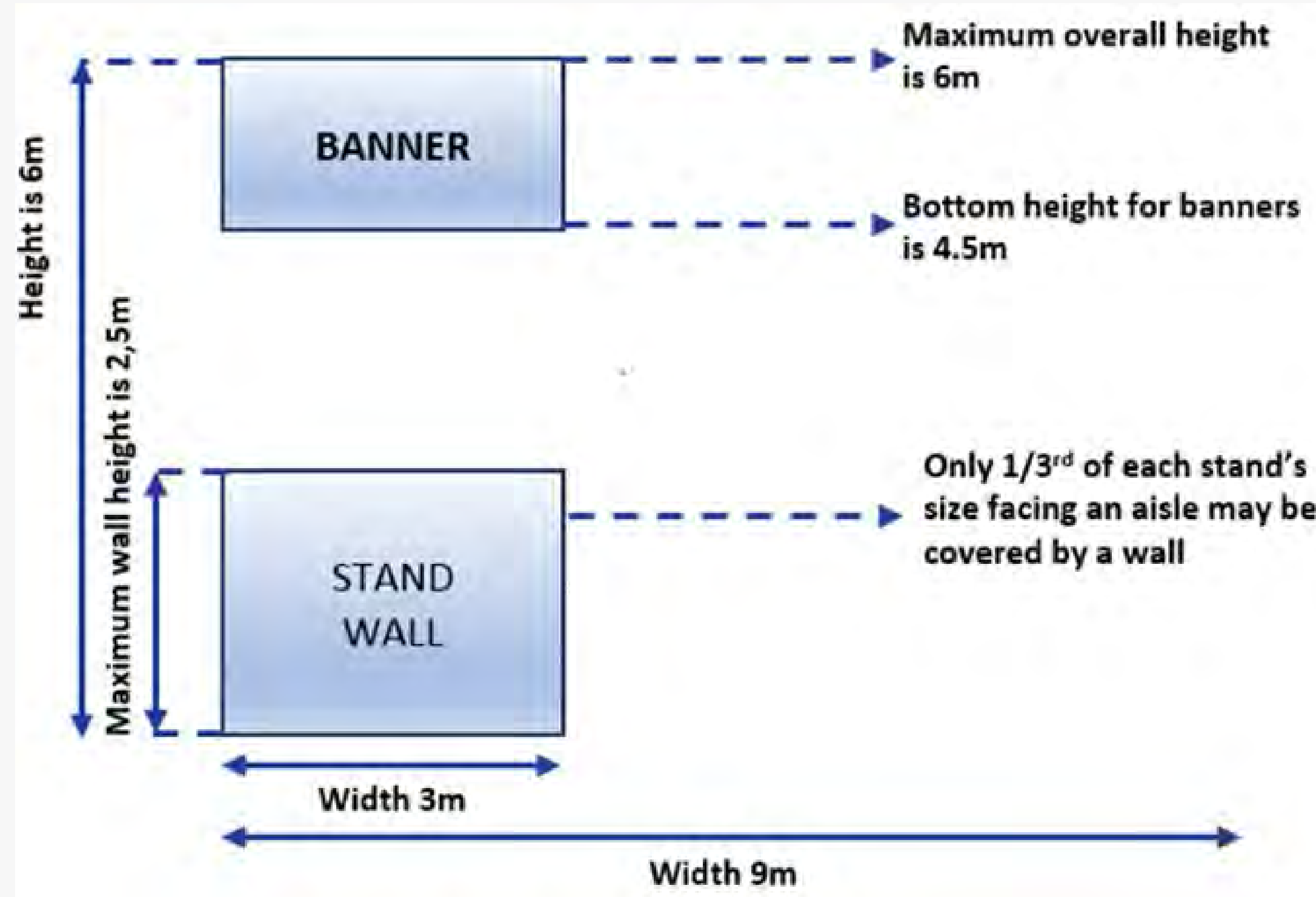
## Island booths





# ESHRE 2024 - Building Restrictions

## Inline, Corner and Peninsula booths





# ESHRE 2024 - Exhibit

## Exhibit build-up

## Times are subject to change

Thursday, 4 July 2024

from 08:00 to 22:00

Friday, 5 July 2024

from 08:00 to 22:00

Saturday, 6 July 2024

from 08:00 to 22:00

Sunday, 7 July 2024

from 08:00 to 17:00 (Welcome reception as from 20:00)



## Saturday, 6 July:

- All booths need to be finished !
- Aisles need to be cleared and all empties need to be moved out
- All aisles need to be clean and empty

## Sunday, 7 July:

- No heavy material can be brought in anymore
- All aisles need to be clean and empty
- Only booth decoration inside the booth is allowed
- No “dirty” works are allowed





# ESHRE 2024 - Exhibit



## Exhibit opening dates / hours for visitors exhibit

Sunday, 7 July	from 20:00 to 22:00 (Welcome Reception in exhibit hall for all delegates)
Monday, 8 July	from 08.30 to 17:00
Tuesday, 9 July	from 08.30 to 17:00
Wednesday, 10 July	from 08.30 to 14:00

From Monday, 8 July to Wednesday, 10 July stand holders will already have access to the exhibit areas as of 07:30



# ESHRE 2024 - Exhibit

## Welcome reception, lunch and coffee breaks

### Welcome Reception at the exhibit areas on:

Sunday, 7 July, at 20:00 (official start of the congress and opening of the exhibit)

### Lunch and coffee breaks at the exhibit areas:



Monday, 8 July

- Coffee break: 09:30-10:00
- Lunch break: 13:00-14:00
- Coffee break: 16:30-17:00

Tuesday, 9 July:

- Coffee break: 09:30-10:00
- Lunch break: 13:00-14:00
- Coffee break: 16:30-17:00

Wednesday, 10 July:

- Coffee break: 09:30-10:00
- Lunch break: 13:00-14:00



# ESHRE 2024 - Exhibit

## Exhibit dismantling

Wednesday, 10 July 2024

Thursday, 11 July 2024

## Times are subject to change

from 15:00 to 24:00

from 08:00 until 17:00



## Please note the following:

- On Wednesday the exhibit will be closed to visitors as of 14:00 (end of the last lunch break)
- Dismantling can only start once the exhibit hall has been cleared of all visitors at 15:00





# ESHRE 2024 - Meeting rooms



Meeting rooms will be available for business meetings at the RAI Center. More details will follow.

Please send your request to [exhibit@eshre.eu](mailto:exhibit@eshre.eu)



## NEW: important changes



- The 'Floor space only' booths won't be cleaned daily
- Booking a booth space in two different halls is not permitted
- Each exhibitor is allowed to reserve a maximum of two separate booth spaces within the same hall. If reserving a second booth, it must be positioned opposite to the first one
- Serving alcohol during exhibit hours is no longer permitted
- Bringing your personal barista is allowed when you pay a fee to the RAI
  
- Sound systems are permissible as long as they do not exceed a volume of 75 decibels within the exhibition space
- The possibility of an Early build-up is still uncertain
- Wearing safety shoes and helmets is mandatory. Equipment can be rented from the RAI's webshop
- Stand builders need to be registered in the RAI's webshop before the start of the build-up days



# Your contacts at ESHRE:

Exhibit team e-mail address: [exhibit@eshre.eu](mailto:exhibit@eshre.eu)

**Veerle De Rijbel** – Exhibit and Sponsorship Manager

[Veerled@eshre.eu](mailto:Veerled@eshre.eu) - +32 474 510 831



**Lieve Buggenhout** – Exhibit and Sponsorship Manager

[Lieve@eshre.eu](mailto:Lieve@eshre.eu) - +32 476 450 867

