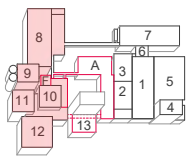


# ESHRE 2024

4-8 July

Hall 8-12 + Entree C & Entree F

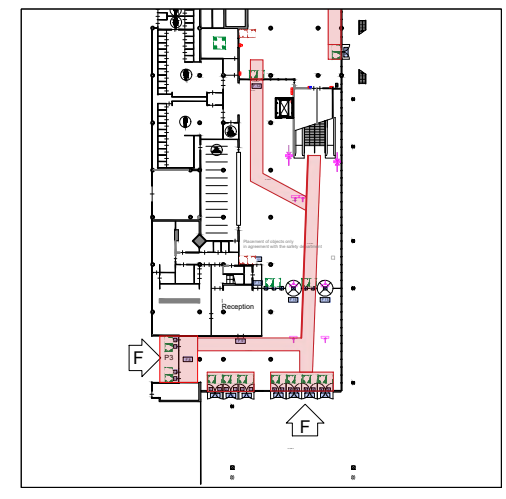


Contact RAI : Ytje de Jong  
Date (dd-mm-yy) : 25-09-2023  
Revision : rev. 05  
Size / Scale : A3 1/1200  
Changes / Omissions excepted



8A (1st floor)  
MAIN SESSION ROOM &  
COMPANY SYMPOSIA

SESSION ROOM  
(1st floor)



ESHRE'S POSTER AREA

The set-up of the session rooms are subject to change

P5b  
MAIN SESSION ROOM  
8B (1st floor)

SESSION ROOM  
(ground floor)

SESSION ROOM (ground or 1st floor)

The green arrows are the flows

this hall won't  
be used

this area can be rented  
(175m<sup>2</sup>)

high tables at which delegates can eat

high tables at which delegates can eat

HALL 11 (1st floor)

HALL 10 (1st floor)

free catering

free catering

Stairs to 1st floor

Registration area  
(ground floor)

free catering

2 SESSION ROOMS (1st floor)

free catering

free catering

HALL 12 (1st floor)

high tables at which delegates can eat

← STATION AMSTERDAM RAI

METRO

