

Hal C

– en kort beskrivelse

Adgang til hallen

På tegningen kan du se numrene for de enkelte porte, der giver adgang til hallen.

Hallens frihøjder

Hver af hallens fire sektioner har sin egen frihøjde, målt fra gulv til underkant lamper:

C1: 4,30m, C2: 5,85m, C3: 6,85m, C4: 6,85m. Se side 18-20.

Belysning

Hallen er udstyret med permanente rig konstruktioner med 150W Powerball Spots, farve 5000 kelvin, som skal tilkøbes jævntilbud.

Til den generelle belysning hænger der (3x58 W) lysarmaturer.

Loft

Netværk trækkes fra loftet.

Wirer

Detailtegningen indeholder information om riggepunkternes placering. Wireophæng over 50 kg kan ikke monteres overalt i hallen. Bella Center forbeholder sig ret til at udføre småjusteringer.

Gulv

Gulvet er gråmalet beton (farvekode Ral 7038). Installation af el, netværk, VVS og trykluft sker via kanaler i hallens betongulv.

Kanalerne indbyrdes afstand er 6 m.

Gulvet kan klare følgende belastninger:

Hjultryk (tvillingehjul)	5.500 kg/m ²
Punktbelastning fordelt på 15x15cm	4.000 kg
Max belastning (lastbil inkl. læs)	4.000 kg/m ²

Søjler

De fritstående søjler i hallen er 40x80cm og placeret for hver 9 meter. Søjlerne i ydervæggene er 35x40cm.

Brandskab og slange vinder – må ikke tildækkes.

Luft

Hal C har aircondition.

Rigging

Se Rig info på side 21

Hall C – a brief description

Accessing the hall

Please refer to the floorplan where access points are indicated.

Ceiling heights

Each of the four sections in hall C has its own ceiling height, measured from the floor to the lower edge of the lighting truss:

C1: 4.30m, C2: 5.85m, C3: 6.85m, C4: 6.85m.

Please see page 18-20.

General lighting

The hall is equipped with permanent lighting truss with 150W Powerball Spots, color 5000 kelvin. The solution is offered according to quote.

General hall light fittings (3x58 W)

Ceiling

Network cables will be supplied from the ceiling.

Drop wires

The detail sketch contains information about the placement of rigging points. Drop wires for 50+ kg cannot be mounted in all locations in the hall. Bella Center reserves the right to make minor adjustments.

Floor

The floor is concrete, painted light grey (color code Ral 7038).

Power, plumbing, network and compressed air will, if possible, be supplied via the subfloor services ducts which are build-in the floor at 6 m intervals.

The floor can carry the following loads:

Wheel loads (twin wheels)	5,500 kg per sqm.
Single point loads per 15x15cm	4,000 kg
Max loads (load incl. weight of truck)	4,000 kg per sqm.

Pillars

40x80cm freestanding concrete pillars line the arcade sections running east/west at intervals of 9m.

Pillars let into the outer walls measure 35x40cm wide.

Fire hose reel – must not be concealed.

Air

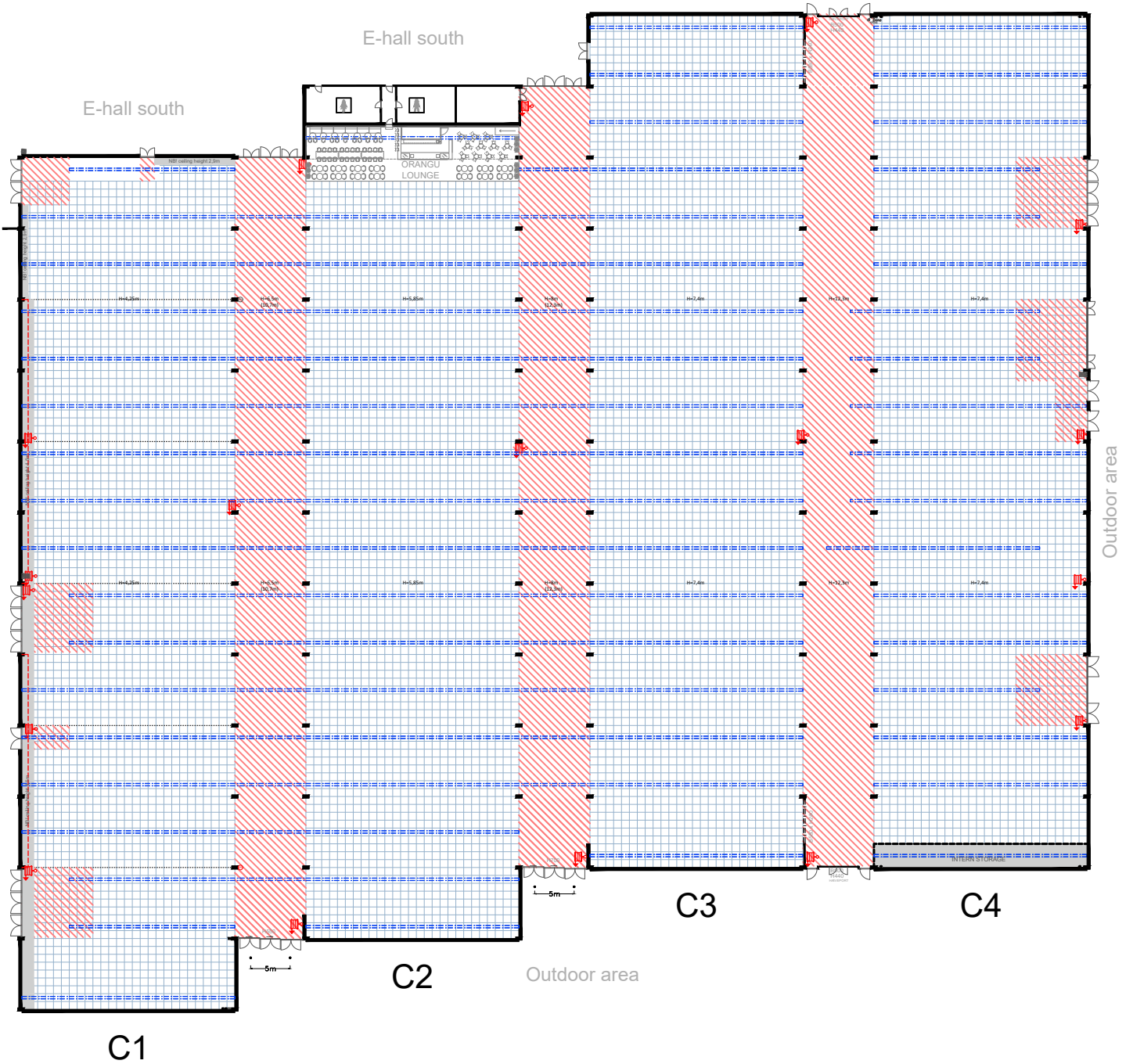
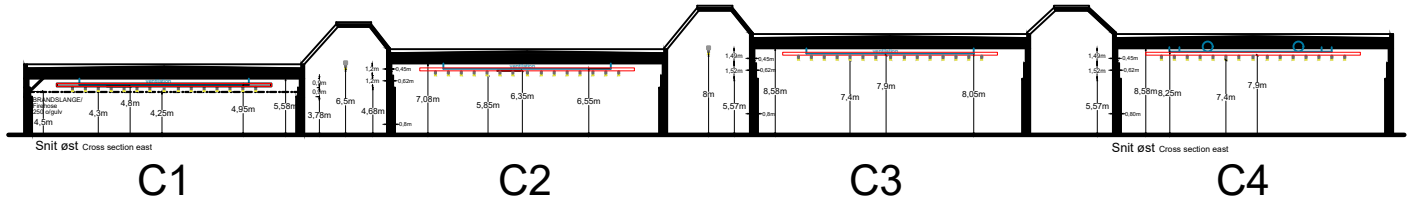
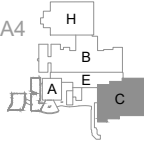
Hall C has air-conditioning.

Rigging - safety first

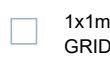


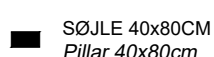




Please see Rigging Info on page 21

HAL C Hall C

SCALE 1:750 - FORMAT A4

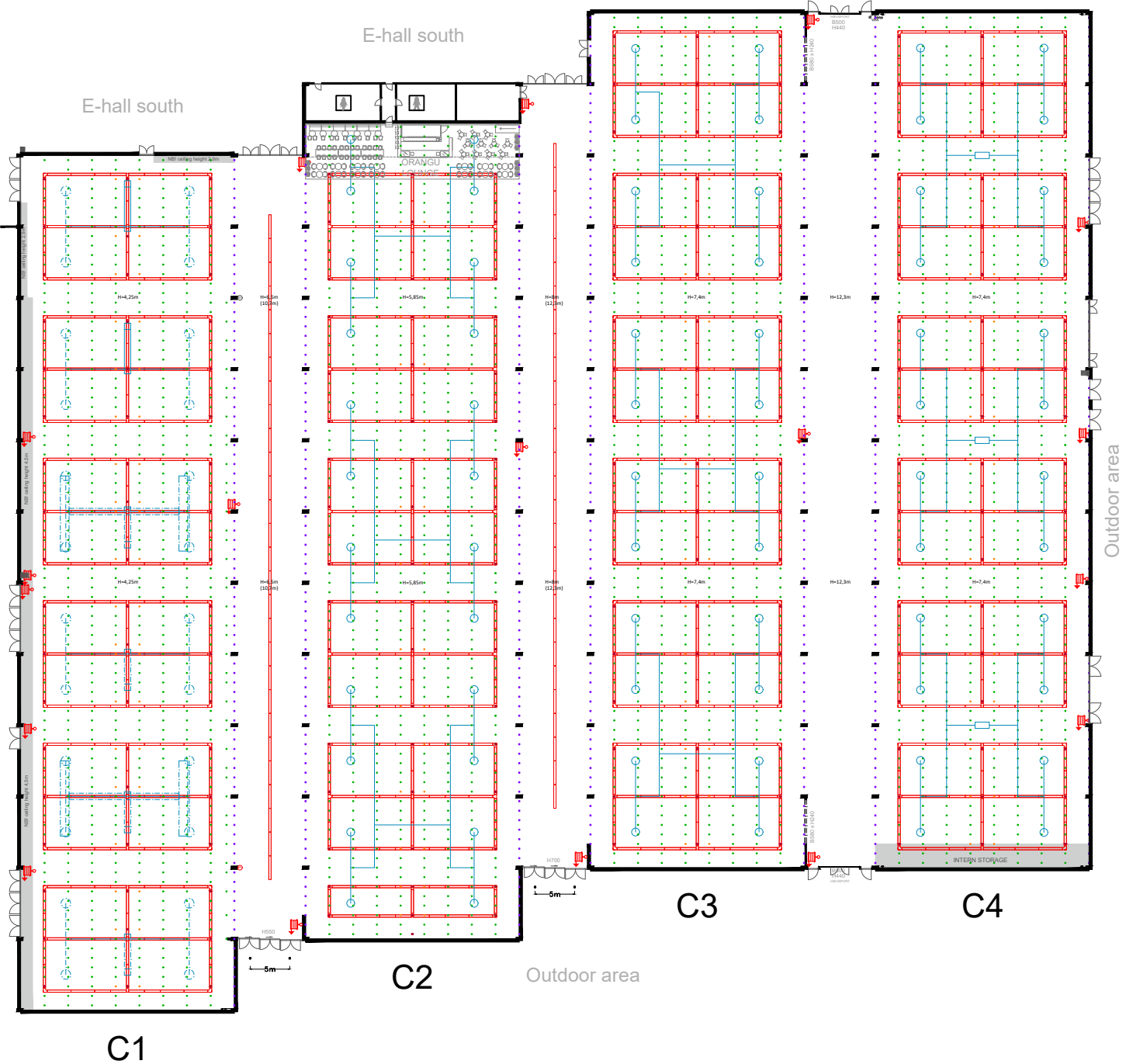
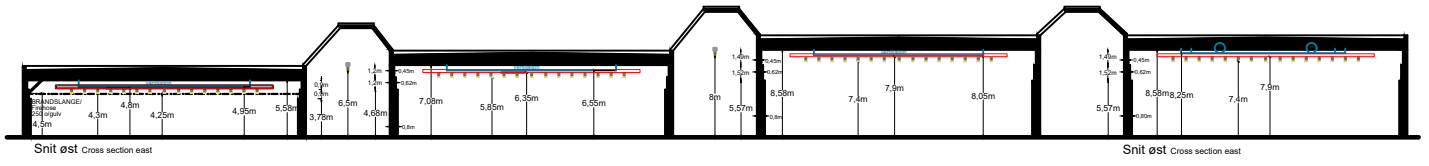
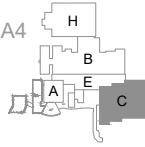


DETAILS Gulv/Floor







-  1x1m GRID
-  BRANDTRYK Fire-alarm
-  ELSKAB Power cabinet
-  SØJLE 40x80CM Pillar 40x80cm
-  SLANGEVINDER Fire-hose reel
-  KABELGRAV Cable duct
-  Brand Restriktions Zone
-  Fire Restriction Zone

HAL C Hall C

SCALE 1:750 - FORMAT A4

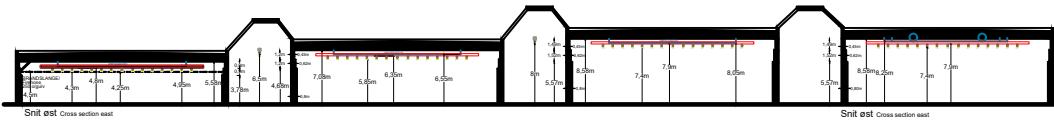
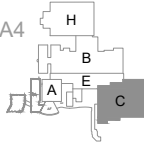


DETAILS Loft/Ceiling

-  BRANDTRYK
Fire-alarm
-  LYS RIG M/SPOTS
Lighting truss with spots
-  SØJLE 40x80CM
Pillar 40x80cm
-  SLANGEVINDER
Fire-hose reel
-  VENTILATION
Ventilation
-  RIGGEPUNKTER I LOFT
Rigging points in ceiling

HAL C Hall C

SCALE 1:750 - FORMAT A4

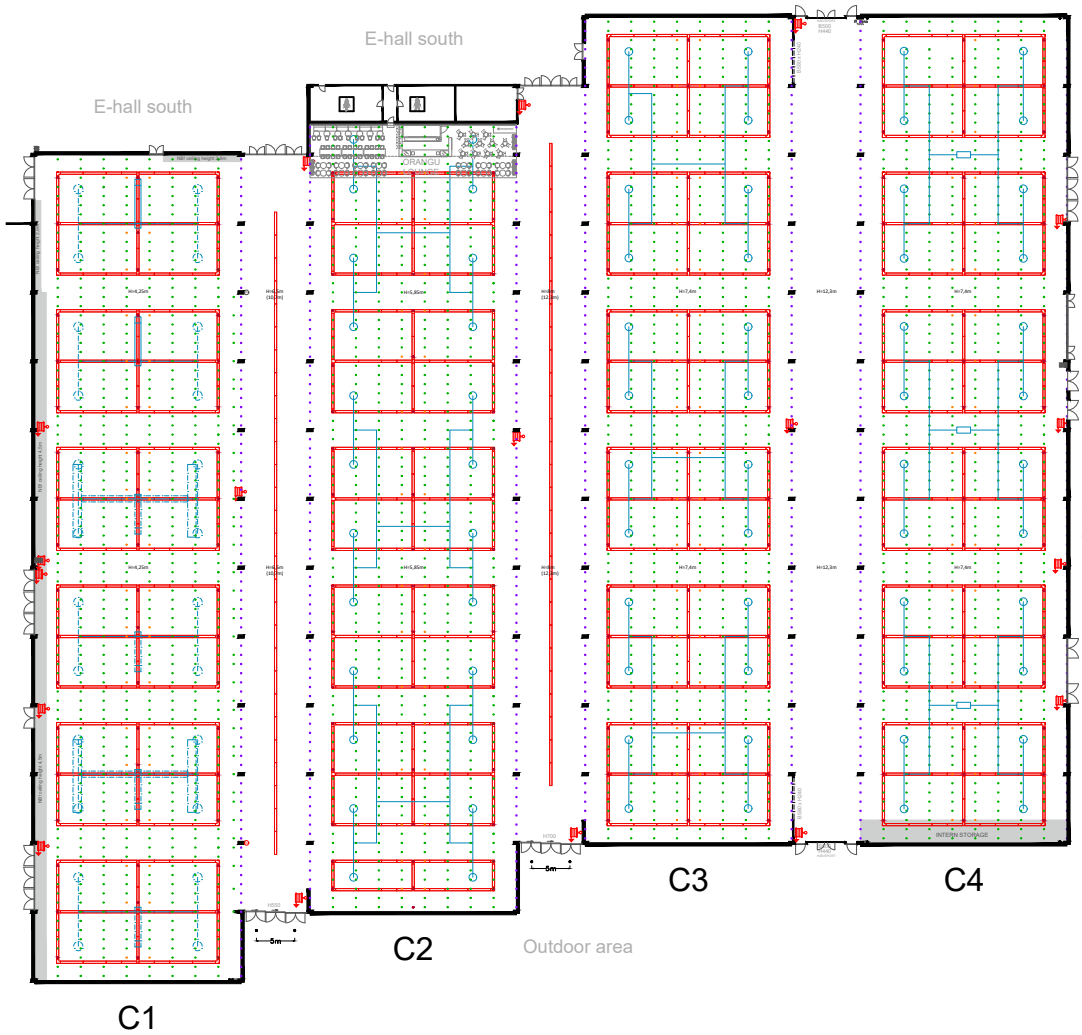


C1

C2

C3

C4



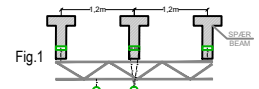
RIGGING INFORMATION

NOTE (DK):

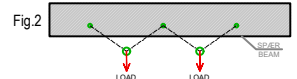
Rigging - sikkerheden i højsædet

På tegningen over C-hallen kan man se alle brugbare riggehuller

De er markeret med symbolet , og man kan altid rigge direkte i dem med en vægt på op til 200 kg (Fig. 1).



Hvis man har behov for ophæng i en position mellem to riggepunkter, kan det opnås med enten bridling (hvis riggehullerne er i samme spær - se Fig 2) eller ved at underhænge et rigstykke mellem to eller flere spær (Fig. 1). Hvis der er behov for et rigstykke, så kontakt din koordinator for et tilbud. Koordinatoren kan også vejlede generelt omkring mulighederne.



Rigge huller (afstand imellem spær 120cm)

Grøn - 200kg

Lilla - 200kg

Orange - 50kg

Rød - TP er i brug til fast rig. Kan ikke belastes yderligere

Laster er totalaster inkl. talje beslag, rig mv.

Ved horisontalt brug af rig huller kan der bridles (Fig 2) Ved vertikalt brug af rig huller skal der underhænges et rigstykke. (Fig. 1)

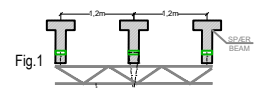
De riggehuller, der bruges til den permanente rig, kan ikke belastes yderligere.

Øvrige punkter kan belastes med 200kg pr. punkt.

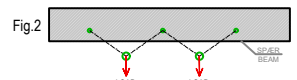
NOTE (UK) :

Rigging - safety first

The drawing of the C-hall shows all accessible rigging points indicated with the symbol . All of these rigging points separately for rigging up to 200kg (Fig. 1).



If you have a need for rigging between two rigging points, this can be solved by using bridling (if the points are in the same beam - Fig 2) or by adding a truss underneath two beams or more (Fig. 3). Please contact your coordinator for further inquiries and quotes.



Rigging Points (Distance between beams 120cm)

Green - 200kg

Purple - 200kg

Orange - 50kg

Red - In use for permanent truss - no extra load allowed

Load is a total of chains, blocks, truss etc.

Bridling is allowed between rigging points on the same beam. (Fig 2)

Bridling is not allowed between rigging points placed on adjacent beams. Specific rigging positions can still be achieved by hanging a truss underneath. (Fig. 1)

The rigging points already in use for the permanent truss cannot be exposed with extra load.

All other rigging points can be used for 200kg

DETAILS Loft/Ceiling

BRANDTRYK
Fire-alarm

LYS RIG M/SPOTS
Lighting truss with spots

SØJLE 40x80CM
Pillar 40x80cm

SLANGEVINDER
Fire-hose reel

VENTILATION
Ventilation

RIGGE PUNKTER I LOFT
Rigging points in ceiling