

Hal E

– en kort beskrivelse

Adgang til hallen

På tegningen kan du se numrene for de enkelte porte, der giver adgang til hallen.

Hallens frihøjder

Hallens frihøjde, målt fra gulv til underkant af rig messelampe er 9,30m. Se side 23-24.

Belysning

Hallen er udstyret med permanent rig konstruktioner og 150W Powerball Spots, farve 5000 kelvin, som skal tilkøbes jævnfør tilbud.

Til den generelle hal belysning hænger der (3x58 W) lysarmaturer.

Bemærk venligst, at sollys igennem glastaget kan være til gene ved brug af pc, video, osv.

Gulv

Installation af el, VVS, netværk og trykluft sker via kanaler i hallens betongulv. Kanalerne ligger i hallens længderetning med en indbyrdes afstand på 15 m.

Gulvet kan klare følgende belastninger:

Hjultryk (tvillingehjul)	5.500 kg/m ²
Enkeltkraft fordelt på 15x15cm	4.000 kg
Max belastning (lastbil inkl. læs)	4.000 kg/m ²

Søjler

Hallens betonsøjler er 40x40cm eller 40x80cm.

Brandskab – må ikke tildækkes.

Luft

Hallen har opvarmet ventilation med separate køleunits.

Hall E – a brief description

Accessing the hall

Please refer to the floor plan where access points are indicated.

Ceiling heights

The ceiling height measured from the floor to the lower edge of the lighting truss is 9,30m. Please see page 23-24.

General lighting

The hall is equipped with permanent lighting truss with 150W Powerball Spots, color 5000 kelvin. The solution is offered according to quote.

General hall light fittings (3x58 W).

Please note that sunlight from the glass roof can cause inconvenience with reflected light when using pc's, videos etc.

Floor

Power, plumbing, network and compressed air will, if possible, be supplied via the sub-floor service ducts build-in the Centre Hall's concrete floor. These run from north to south at 15 m. intervals throughout the length of the hall.

The floor can carry the following loads:

Wheel loads (twin wheels)	5,500 kg per sqm.
Single-point loads per 15x15cm	4,000 kg
Max loads (load incl. weight of truck)	4,000 kg per sqm.

Pillars

A limited number of free-standing concrete pillars are to be found in the northern end of the hall. These measure 40x40cm or 40x80cm.

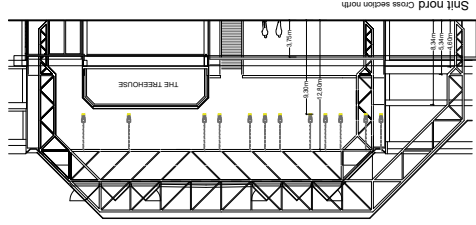
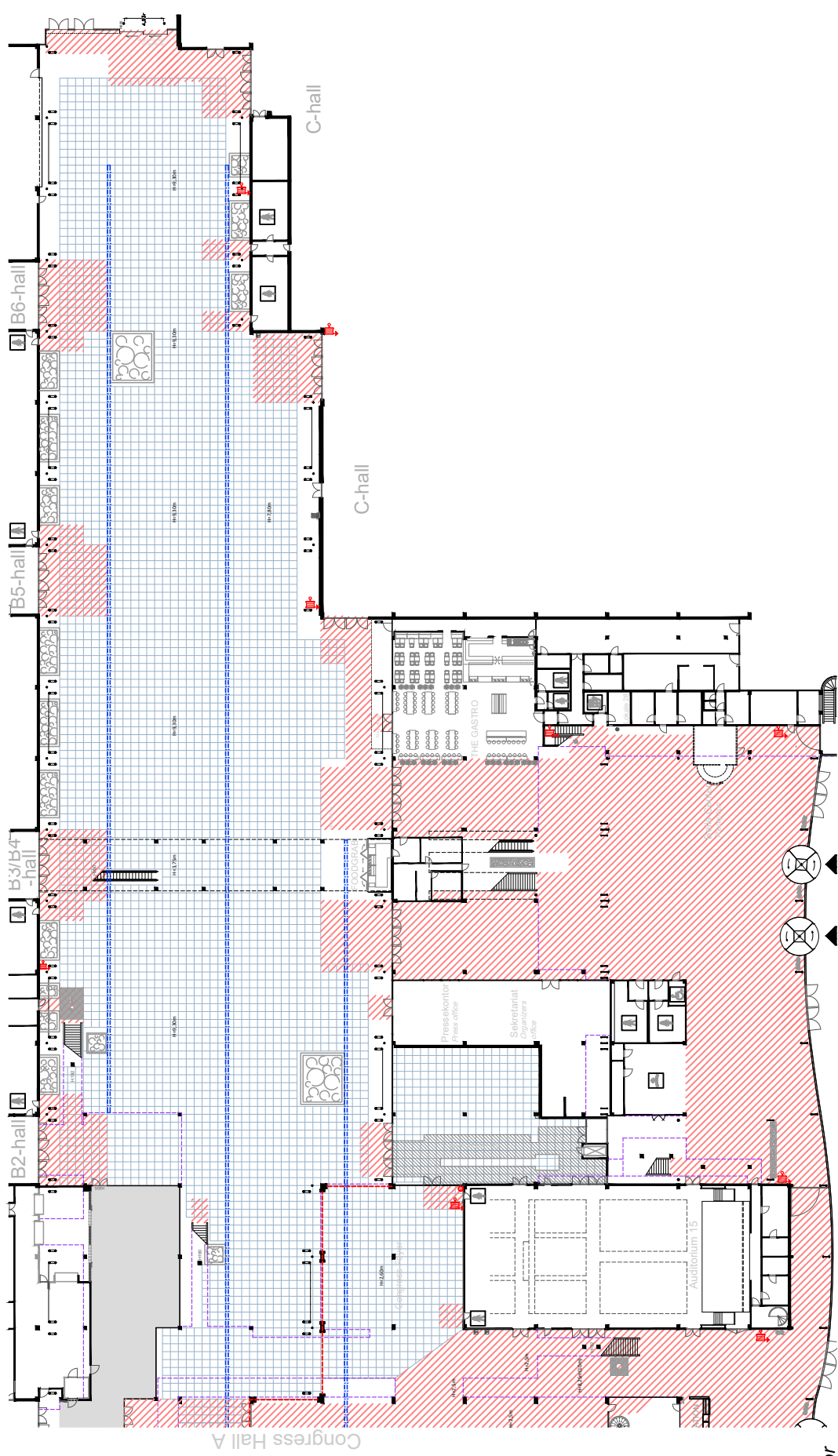
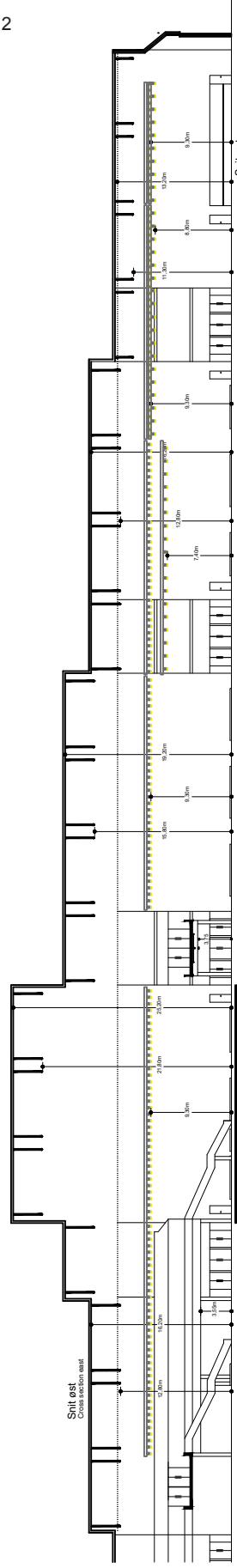
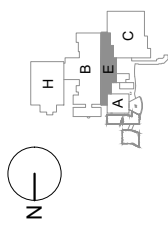
Fire hose reel – must not be concealed.

Air

The hall has heated ventilation with separate cooling units.

HALE Hall E

SCALE 1:750 - FORMAT A4



DETAILS Gulv/Floor

- Brand Restriktions Zone / Fire Restriction Zone
- BRANDTRYK Fire-alarm
- 1x1m GRID
- SLANGEVINDER Fire-hose reel
- FOLDEVEG Movable Wall
- KABELGRAV Cable duct
- SØJLE 40x40CM Pillar 40x40cm
- SØJLE 40x80CM Pillar 40x80cm
- SØJLE/SPÆR 2X Ø22CM - L=97CM Pillar/Beam 2x Ø22cm - L=97cm

