

TEKNISK INFO

TECHNICAL INFO

9. maj 2022 4.12 PM



Hal E

– en kort beskrivelse

Adgang til hallen

På tegningen kan du se numrene for de enkelte porte, der giver adgang til hallen.

Hallens frihøjder

Hallens frihøjde, målt fra gulv til underkant af rig messelampe er 9,30m. Se side 21-22.

Loft/Ophængning i loft

Wirer: Der kan ophænges wire med en maks. belastning på 99 kg, dog afhængigt af øvrig ophængning i loftet. Kontakt venligst din kontaktperson i Bella Center for beregninger samt godkendelse
Bella Center forbeholder sig ret til evt. at tilpasse placering.

Taljepunkter og rigning: Der kan rigges i spær med op til 500kg per riggepunkt, dog afhængigt af øvrig ophængning i loftet.

Detailtegningen indeholder information om riggepunkternes placering

Hvis man har behov for ophæng i en position mellem to riggepunkter, kan det opnås ved at hænge et rig-stykke. Har du brug for rigning eller opsætte rig-stykke, bedes du kontakte din kontaktperson i Bella Center for muligheder, validering og tilbud.
Bella Center forbeholder sig ret til evt. at tilpasse placering.

Belysning

Hallen er udstyret med permanent rigkonstruktioner og 150W Powerball Spots, farve 5000 kelvin, som skal tilkøbes jævnfør tilbud.

Til den generelle hal belysning hænger der (3x58 W) lysarmaturer.
Bemærk venligst, at sollys igennem glastaget kan være til gene ved brug af pc, video, osv.

Gulv

Installation af el, VVS, netværk og trykluft sker via kanaler i hallens betongulv. Kanalerne ligger i hallens længderetning med en indbyrdes afstand på 15 m.

Gulvet kan klare følgende belastninger:

Hjultryk (tvillingehjul)	5.500 kg/m ²
Punktbelastning fordelt på 15x15cm	4.000 kg
Max belastning (lastbil inkl. læs)	4.000 kg/m ²

Søjler

Hallens betonsøjler er 40x40cm eller 40x80cm.

Brandskab – må ikke tildækkes.

Luft

Hallen har opvarmet ventilation med separate køleunits.

Hall E – a brief description

Accessing the hall

Please refer to the floor plan where access points are indicated.

Ceiling heights

The ceiling height measured from the floor to the lower edge of the lighting truss is 9,30m. Please see page 21-22.

Ceiling/suspension in the ceiling

Drop wires: We can mount drop wires with a weight up to 99 kg., however, depending on other suspensions in the ceiling. Please contact your contact at Bella Center for calculations and approval.
Bella Center reserves the right to to customize location.

Hoist and rigging: It is possible to use the truss for rigging. Up to 500 kg per rigging point, however, depending on the other suspensions in the ceiling.

The floorplan contains information about the location of the rigging points.

If You need suspension in a position between two rigging points, this can be achieved by hanging a rig-piece. If you need rigging or to hang a rig-piece, please contact your contact at Bella Center for options, validation and offers.

Bella Center reserves the right to to customize location.

General lighting

The hall is equipped with permanent lighting truss with 150W Powerball Spots, color 5000 kelvin. The solution is offered according to quote.

General hall light fittings (3x58 W). Please note that sunlight from the glass roof can cause inconvenience with reflected light when using pc's, videos etc.

Floor

Power, plumbing, network and compressed air will, if possible, be supplied via the sub-floor service ducts build-in the Centre Hall's concrete floor. These run from north to south at 15 m intervals throughout the length of the hall.

The floor can carry the following loads:

Wheel loads (twin wheels)	5,500 kg per sq.m.
Single-point loads per 15x15cm	4,000 kg
Max loads (load incl. weight of truck)	4,000 kg per sq.m.

Pillars

A limited number of free-standing concrete pillars are to be found in the northern end of the hall. These measure 40x40cm or 40x80cm.

Fire hose reel – must not be concealed.

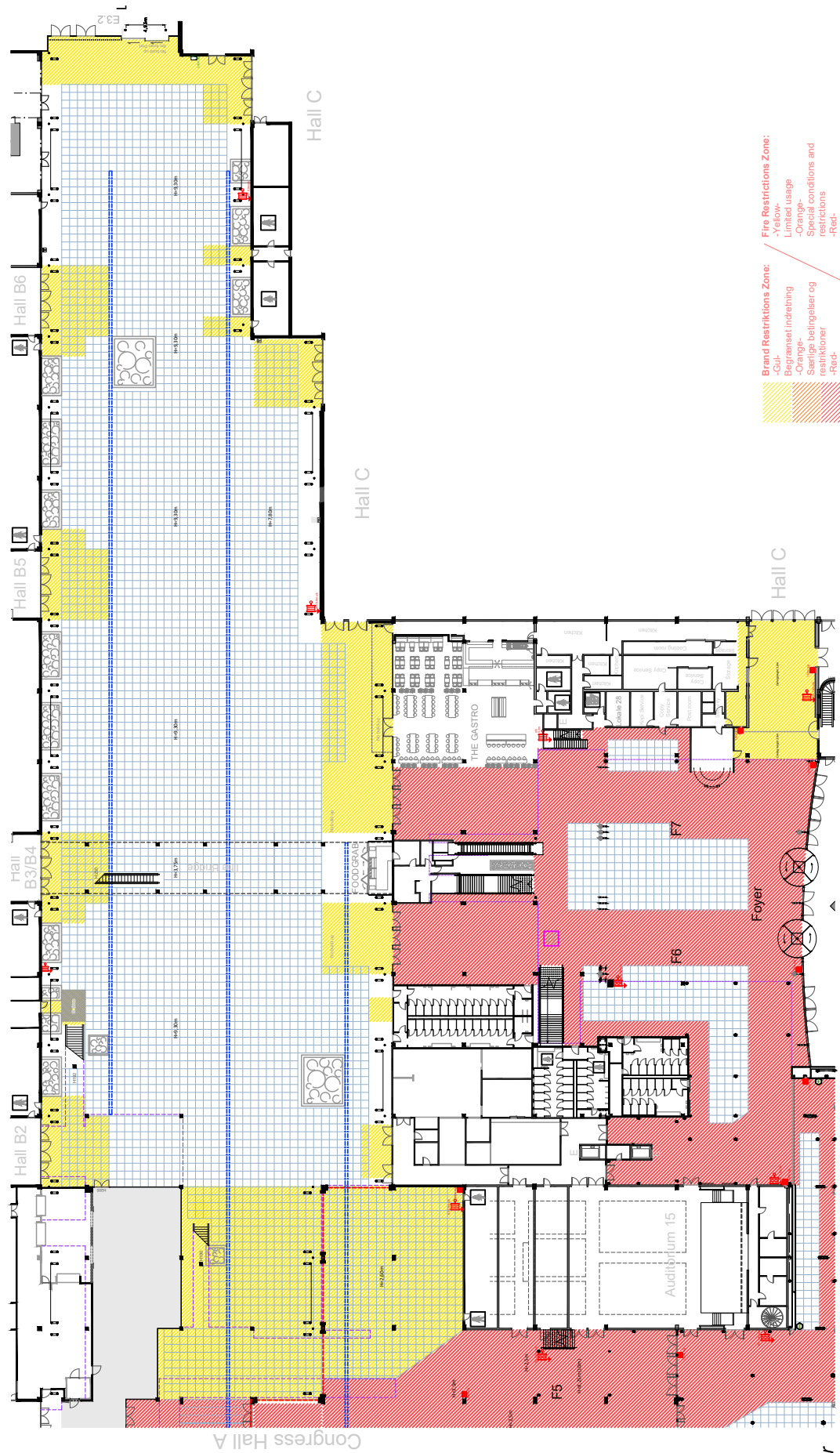
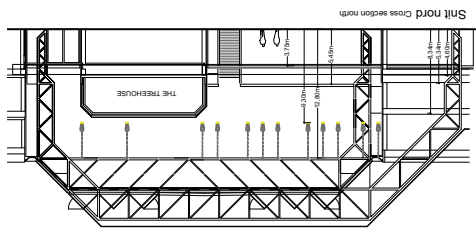
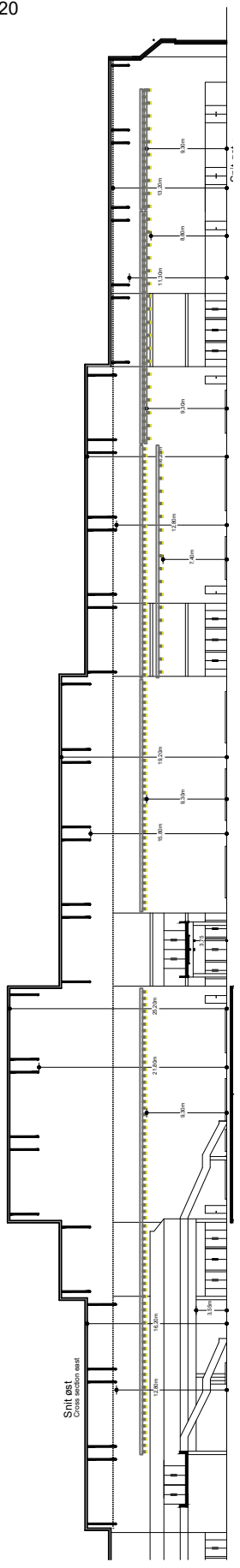
Air

The hall has heated ventilation with separate cooling units.

**BELLA ·
CENTER**
COPEN
HAGEN

HALE Hall E

SCALE 1:750 - FORMAT A4



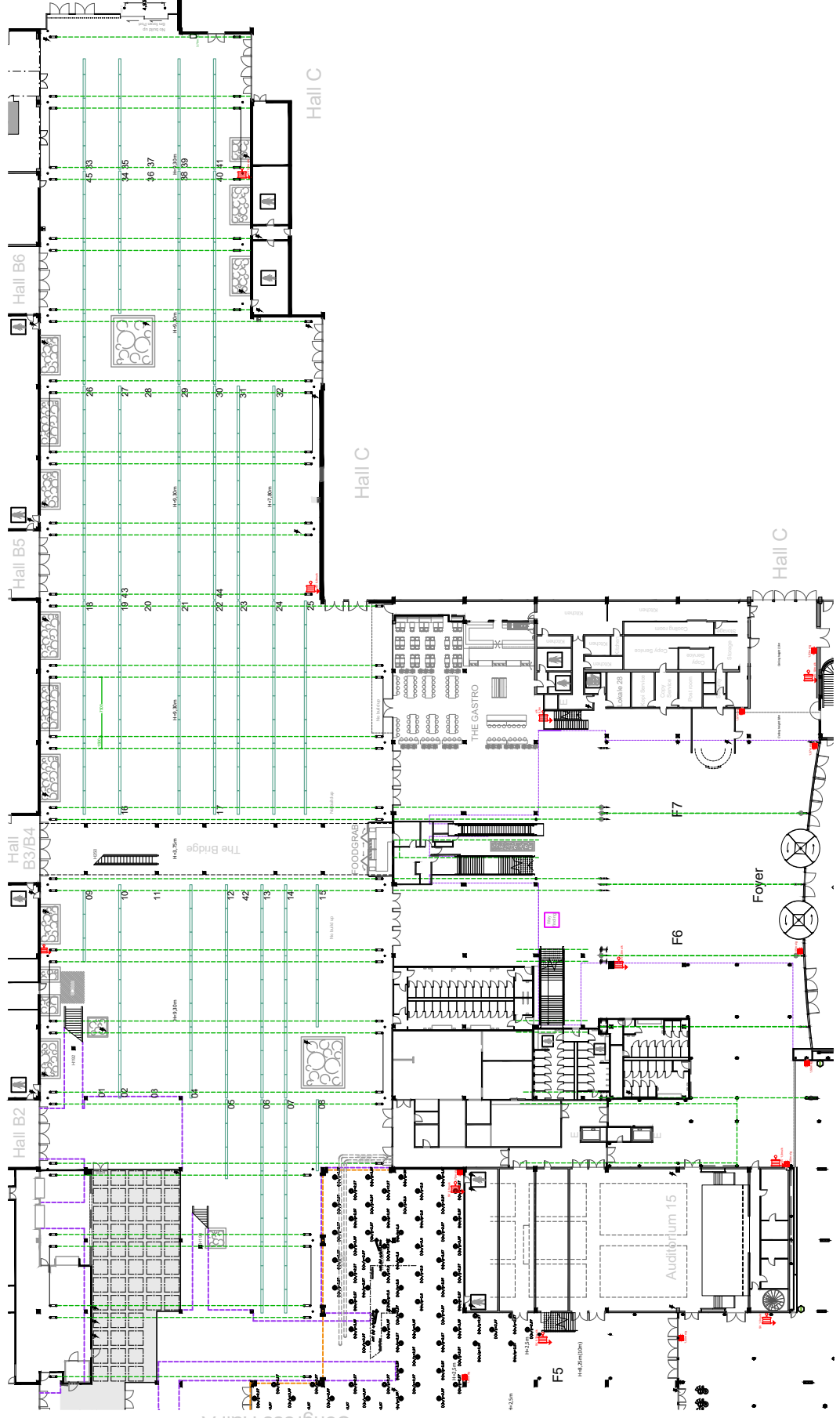
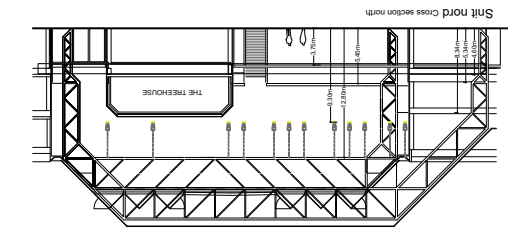
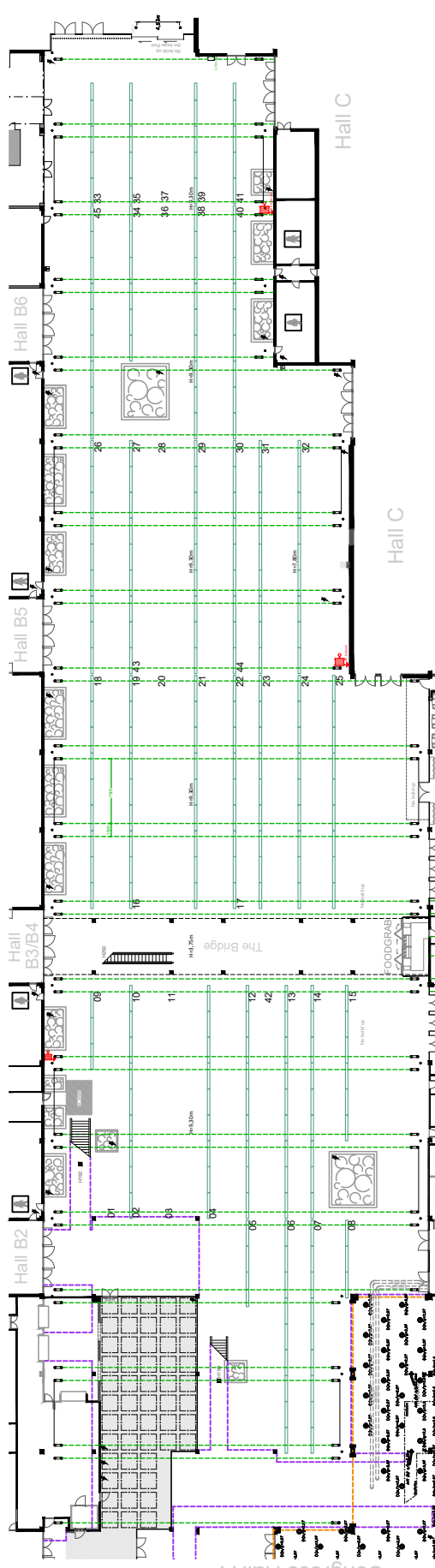
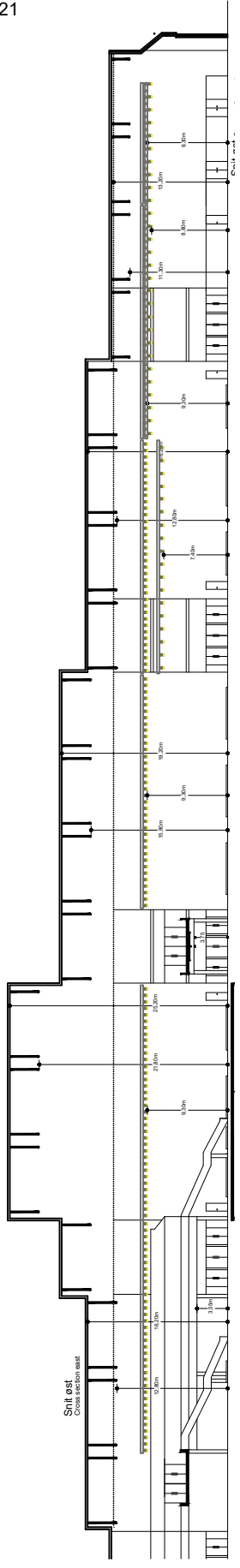
- Brand Restriktions Zone:**
- Gul - Begrenset indraining
 - Orange - Særlige betingelser og restriktioner
 - Rød - Opbygning forbudt
- Fire Restriktions Zone:**
- Yellow - Limited usage
 - Orange - Special conditions and restrictions
 - Red - All Build up prohibited

DETAILS Gully/Floor

- 1x1m GRID
- SLANGEVINDER Fire-hose reel
- FOLDEVÆG Movable Wall
- KABELGRAV Cable duct
- SØJLE 40x40CM Pillar 40x40cm
- SØJLE 40x80CM Pillar 40x80cm
- SØJLE/SPÆR 2x Ø22CM - L=97CM Pillar/Beam 2x Ø22cm - L=97cm
- 1 SAL. kant 1st floor ledge

HAL E Hall E

SCALE 1:750 - FORMAT A4



DETAILS Loft/Ceiling

- 1x1m GRID
- 1st floor ledge
- SLANGEVINDER Fire-hose reel
- SPÆR Beam
- LYS RIG MISPOTS Lighting truss with spots
- SØJLE 40x40CM Pillar 40x40cm
- SØJLE 40x80CM Pillar 40x80cm
- SØJLE/SPÆR 2x Ø22CM - L=97CM Pillar/Beam 2x Ø22cm - L=97cm