

# The use of ultrasound and serum biochemistry to assess health of early pregnancy

Davor Jurkovic

University College Hospital

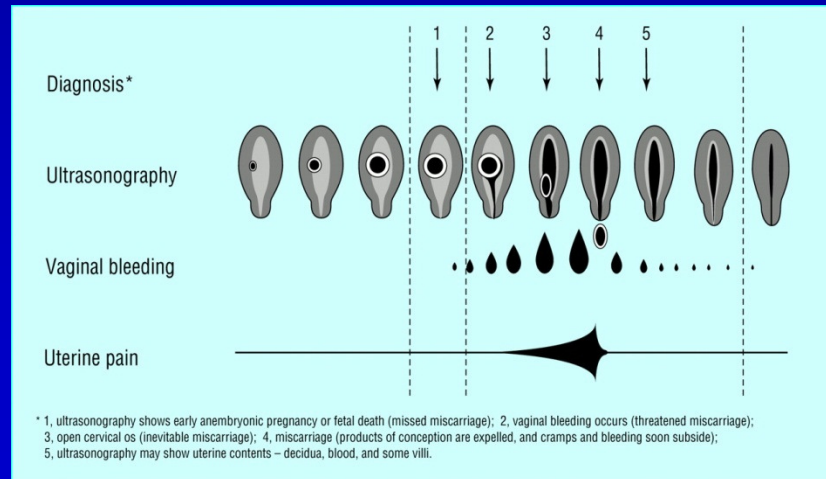
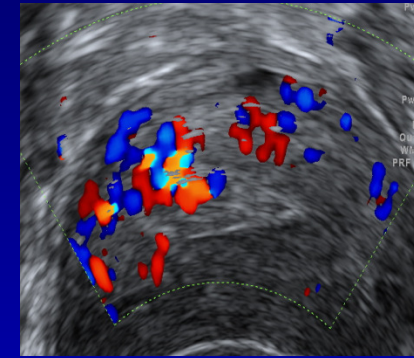
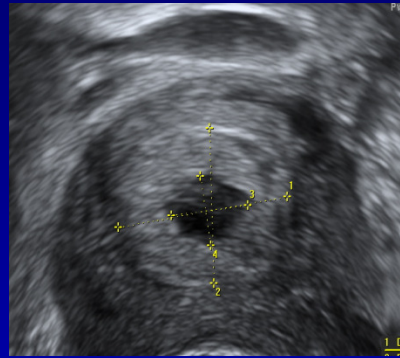
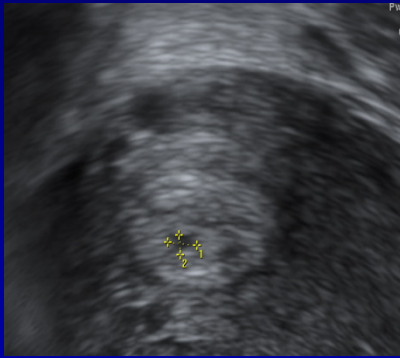
London

# What do women want to know?

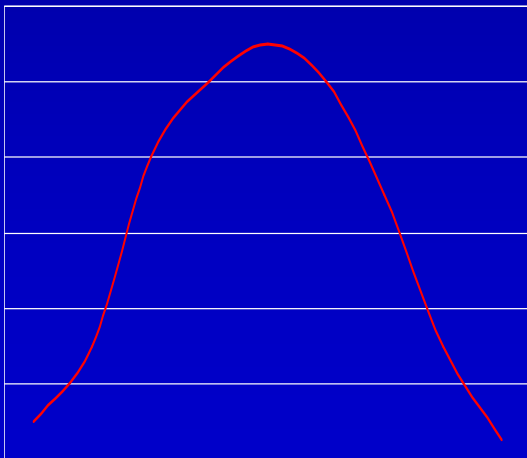
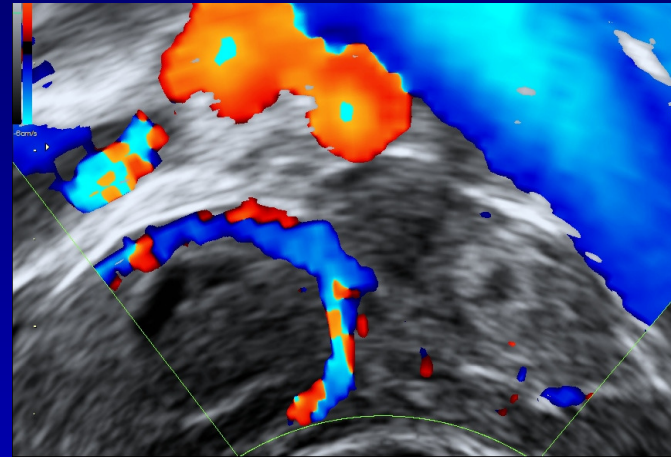
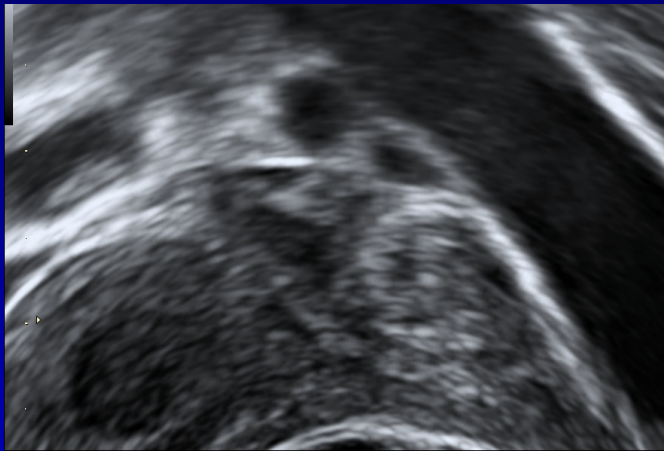
- Is the pregnancy in the right place?
- Is it going to continue?
- Is it likely to be normal?



# Natural history of miscarriage



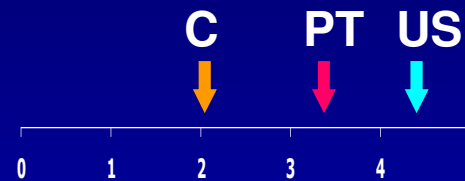
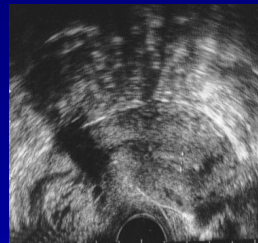
# Natural history of ectopic pregnancy



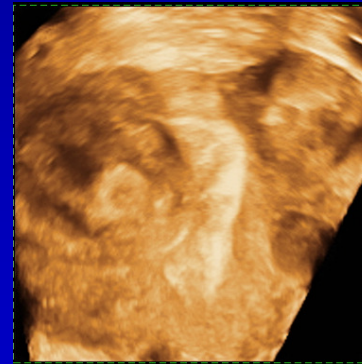
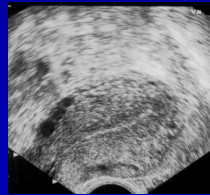
- Day 1 - hCG 679, prog 45
- Day 3 - hCG 1184, prog 44
- Day 5 - hCG 1315, prog 33
- Day 7 - hCG 1401, prog 25
- Day 11 - hCG 242, prog 3
- Day 18 - hCG 88, prog 2

# Pregnancy cannot be found. Why?

- Too early

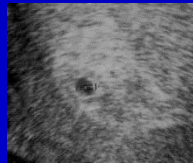


- Too late

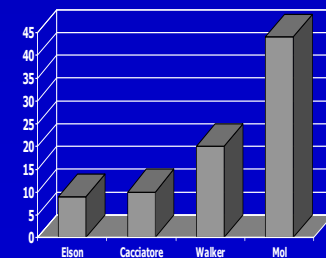


- Too difficult

- Too bad



PUL



# Current concepts

## *Aims*

- To diagnose an ectopic pregnancy as early as possible in order to initiate treatment
- To differentiate patients with pathological pregnancy that will resolve spontaneously from those with pathological pregnancy necessitating active therapeutic intervention and those with an early normal intrauterine pregnancy

# PUL - Logistic models

$$P_{\text{ectopic}} = \frac{e^{5.79-4.21 \text{ hCG ratio}}}{1 + e^{5.79-4.21 \text{ hCG ratio}} + e^{9.92-7.66 \text{ hCG ratio}}}$$

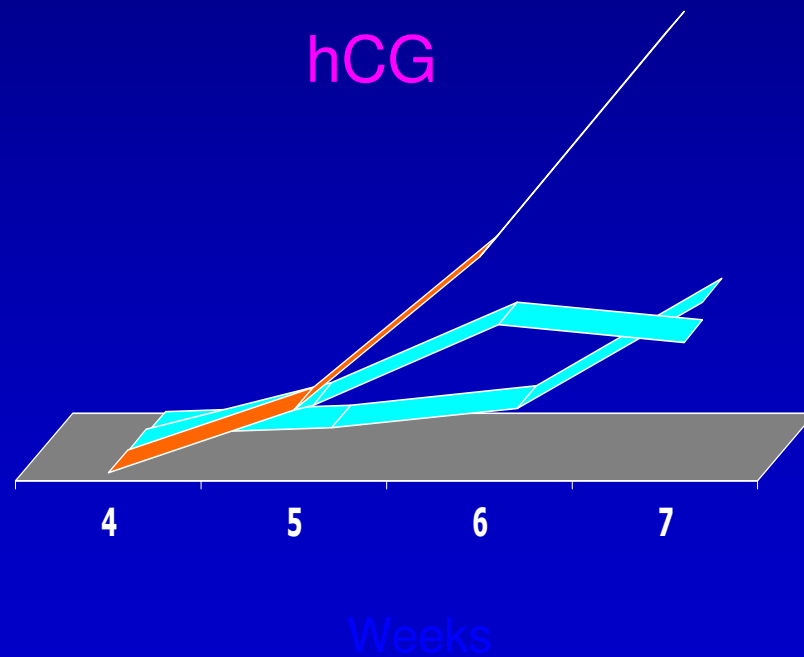
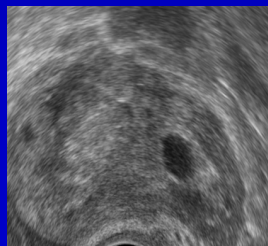
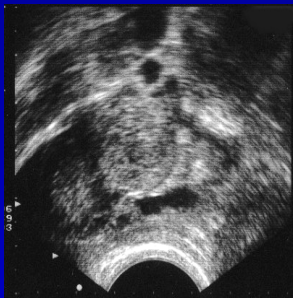
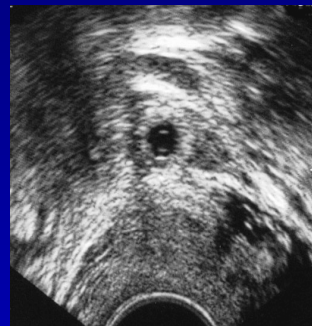
$$P_{\text{failing}} = \frac{e^{9.92-7.66 \text{ hCG ratio}}}{1 + e^{5.79-4.21 \text{ hCG ratio}} + e^{9.92-7.66 \text{ hCG ratio}}}$$

$$P_{\text{IUP}} = \frac{1}{1 + e^{5.79-4.21 \text{ hCG ratio}} + e^{9.92-7.66 \text{ hCG ratio}}}$$

hCG ratio = hCG 48 hours/hCG 0 hours

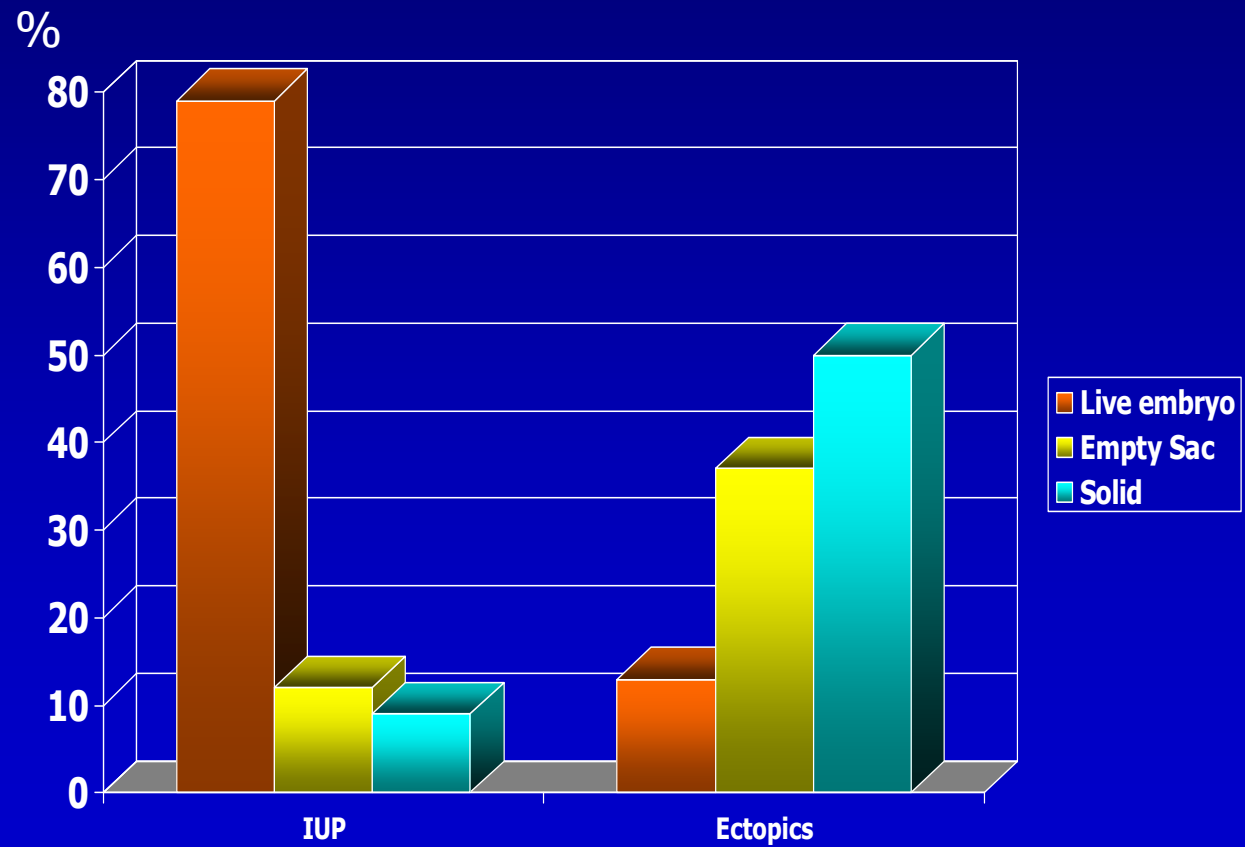
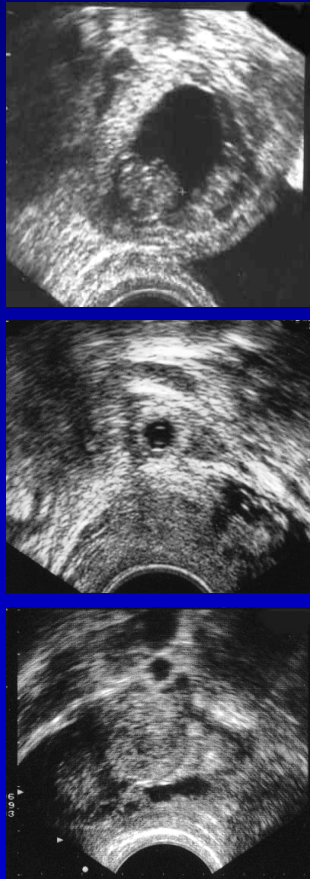
# Tubal ectopics

## *Morphology and hCG*



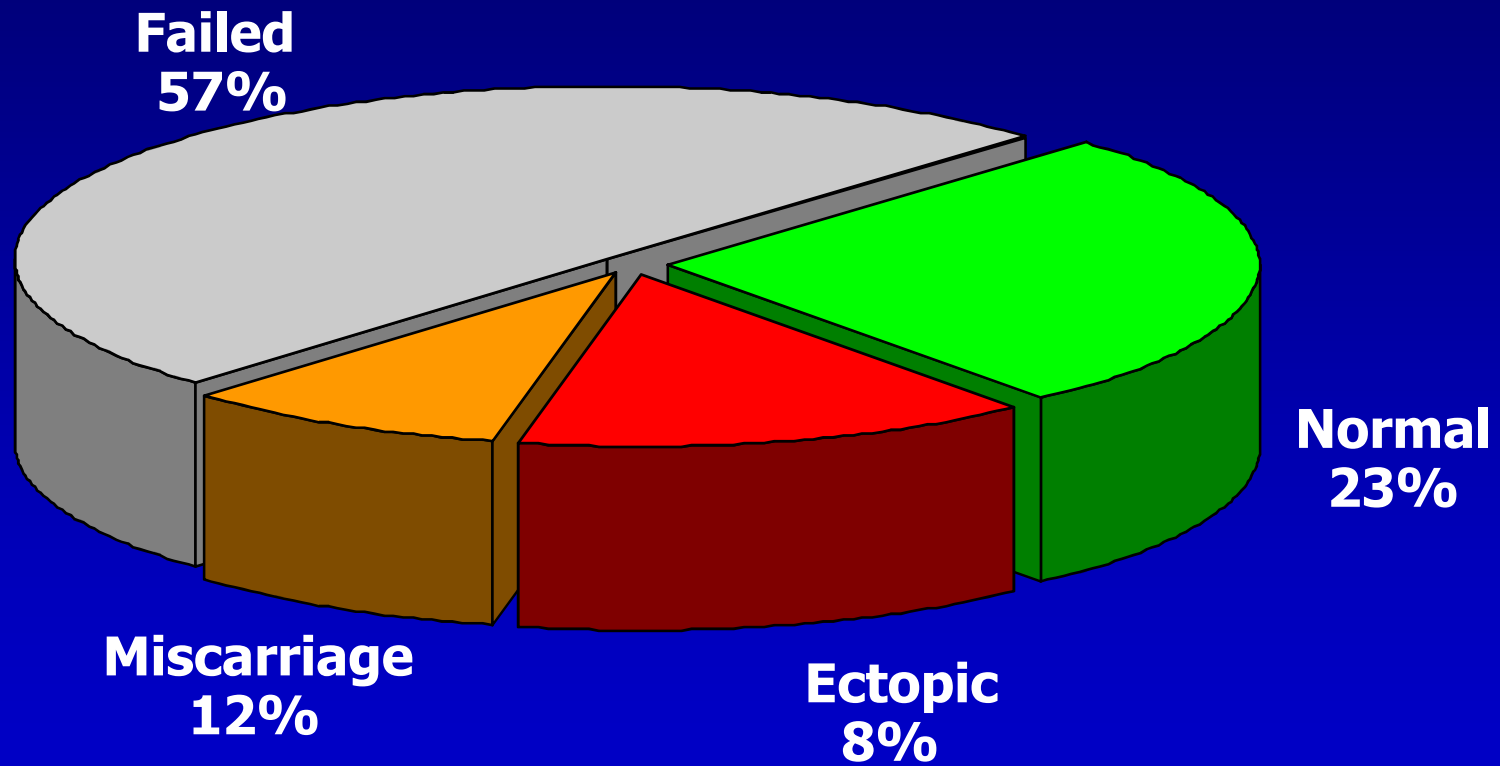


# Morphology of IUPs and Ectopics



# Pregnancies of unknown location

*Final diagnosis*



**N=1102**

# What are the roles of hCG and progesterone?



hCG = measure of size  
Progesterone = measure of speed

ERROR: undefined  
OFFENDING COMMAND: ~

STACK: