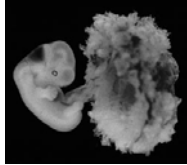


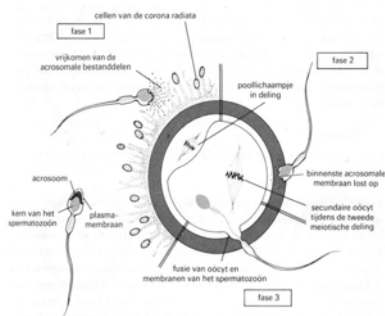
Early pregnancy angiogenesis

Niek Exalto

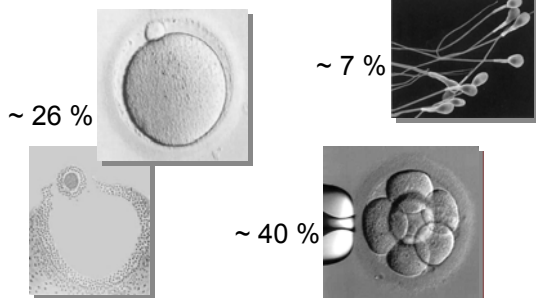


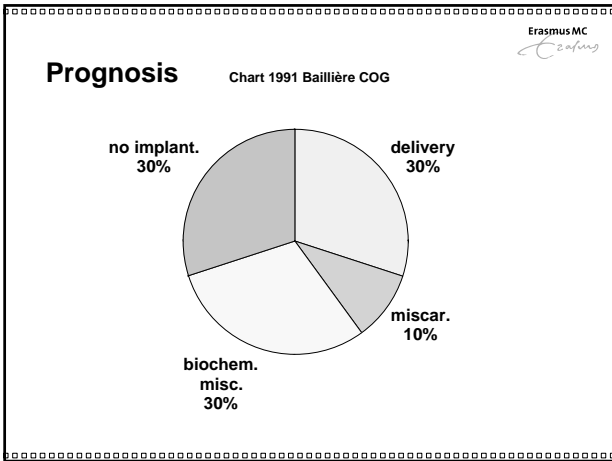
Varna 2008

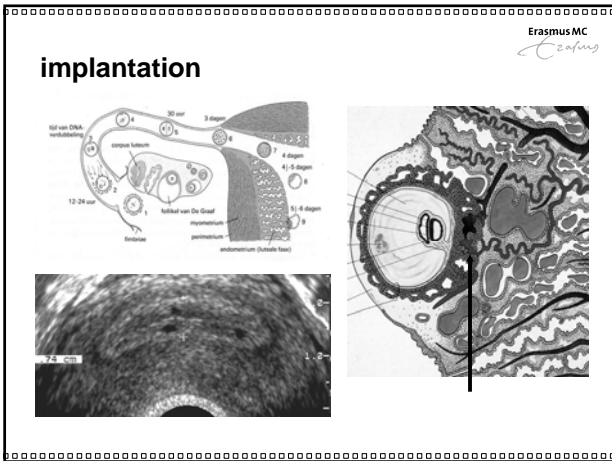
Conception

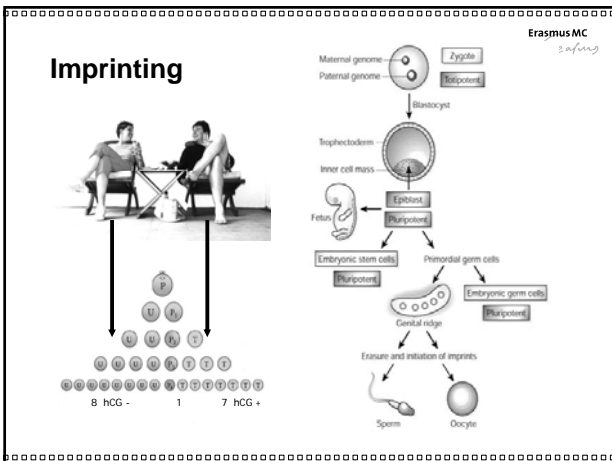


Abnormal karyotype



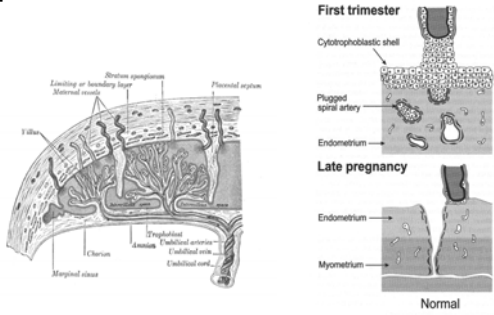






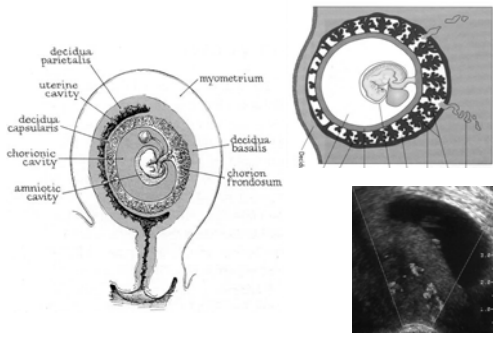
placenta

ErasmusMC
Erasmus



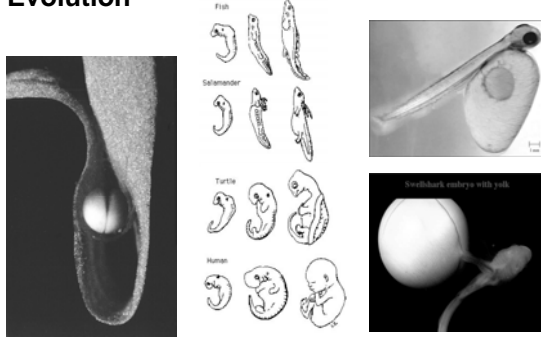
Intervillous space

ErasmusMC
Erasmus

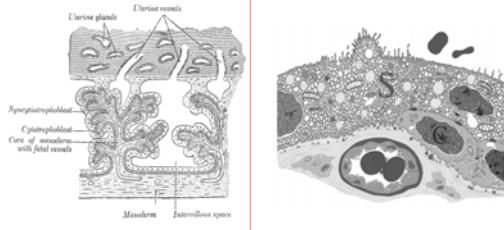


Evolution

ErasmusMC
Erasmus



Vasculo-syncytial membrane



US vs chromosomal abn.

Minelli Ann Genet 1993

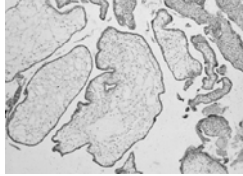
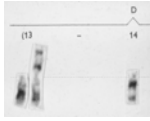
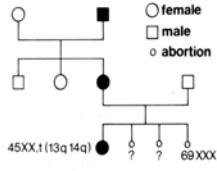
	Empty sac	Fetal death
Chromosomal abnormal	67 %	53 %
Trisomy	74 %	35 %
Trisomy 16 & 22	+	-
45XO	0 %	10 %

Chromosomal abnormalities

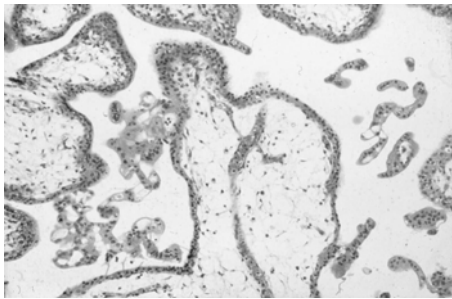
Geraedts 1999 Human Reprod

Trisomie	1	Lethal before implantation
	16	only in miscarriages
	13 and 18	survival > 1 %
	21	survival ~ 20 %

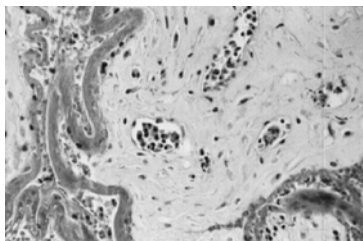
Case: 22 yrs, epilepsy recurrent miscarriage



Normal vascularization



Retention time



Fibrosis
Trophoblast deg
Vessels +++

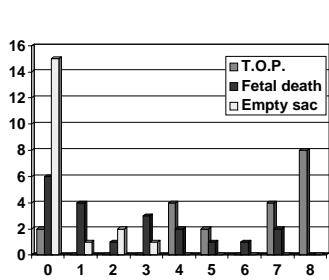
Retention time

Meegdes et al 1988 Fertil Steril

	< 15 dg	≥ 15 dg	Chi-sq
Number of misc. (%)	n = 8	n = 12	
vessels	6 (75)	7 (58)	ns
Fibrosis	1 (13)	9 (75)	p<0.05
Trophoblast deg	6 (75)	12 (100)	p<0.05
Hydropic deg	2 (25)	7 (56)	p<0.05

Vascularization

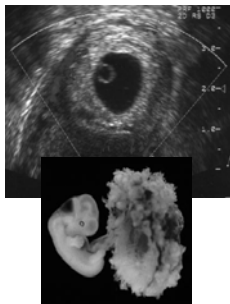
Meegdes et al 1988 Fertil Steril



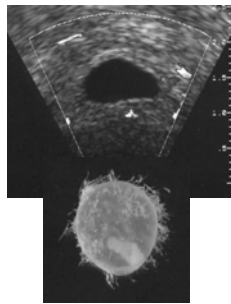
Gevascularized Villi	%
T.O.P.	89
Fetal death	26
Empty sac	9

Vascular desity of vascularized villi	
T.O.P.	17
Fetal death	5
Empty sac	4

normal

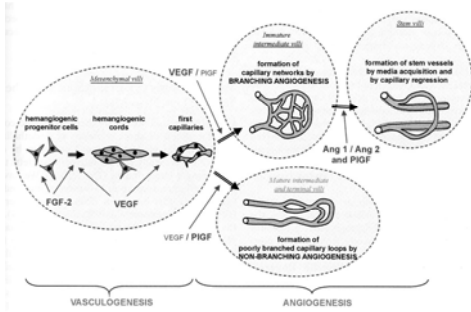


abnormal



Vasculogenesis ~ Angiogenesis

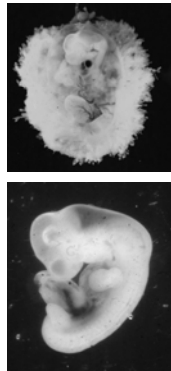
ErasmusMC
Erasmus



haematopoïesis

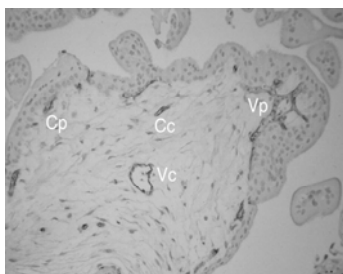
ErasmusMC
Erasmus

- o Vessels have a lumen from 6 wk onwards
- o In the beginning mainly nucleated blood cells
 - At 8 weeks only nucleated blood cells
 - between 10 and 12 weeks 10%
 - After 12 weeks sporadically



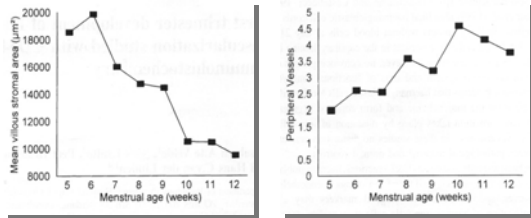
Vascular elements (CD 31)

ErasmusMC
Erasmus



First trimester chronic villi

te Velde et al. 1997 Human Reprod



Vascularisation in the first trimester

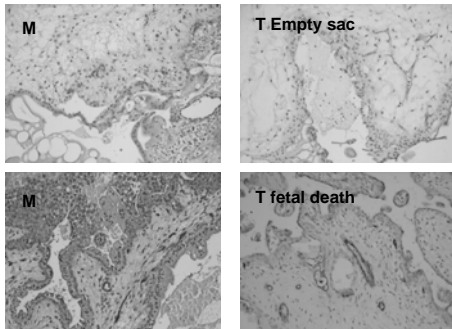
Lisman et al Fertil Steril 2002

First trimester	n	cords		vessels		Total
		c	p	c	p	
Termination of pregn.	12	1.5	1.6	2.3	3.0	8,4
Fetal death	12	2.7	0.6	0.6	0.9	4,8
Empty sac	12	3.3	0.6	0.6	0.2	4,7

Abnormal development of vasculosyncytial membrane

MOLA and Triploidy

Lisman et al 2005 Human Reprod



Vascularisation in late miscarriage

Lisman et al 2002

16 - 22 weeks	n	cords		vessels	
		c	p	c	p
Normal	4	0.8	0.7	4.5	5.3
Chrom abn	10	2.5	2.7	3.2	2.7
IUGR	13	5.6	3.2	2.9	1.7

Vascularization Score (routine H-E)

- Grade 0 insufficient number of villi
- Grade I Normal
vessels centr. and peripherally in almost all villi (9/10)
- Grade IIA mild hypoplasia
vessels less numerous and mainly centr. Not in all villi
- Grade IIB severe hypoplasia
mainly avascular. Vessels present in a single villus
- Grade III Avascular
all villi avascular, sporadically a vessel


Classification

Hakvoort et al Human Reprod 2006

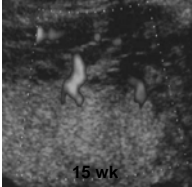


ErasmusMC
Erasmus

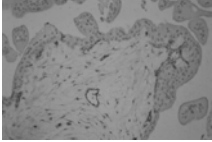
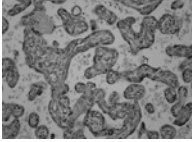
Flow



1e trimester

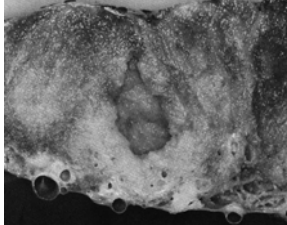


15 wk

ErasmusMC
Erasmus

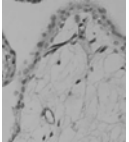
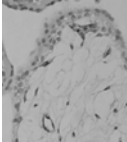
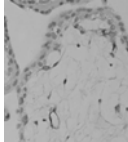
An anatomic basis for ultrasound images of the human placenta
Vermeulen et al Am J Obstet Gynaecol 1985

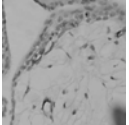
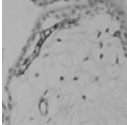
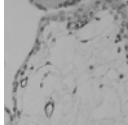


Perfusion fixation
with formaldehyde
Art 70 mm Hg
Ven 20 mm Hg

ErasmusMC
Erasmus

3D reconstruction

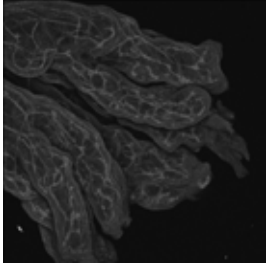




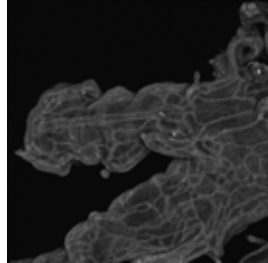
Confocal microscopy

ErasmusMC
Erasmus

6 wk

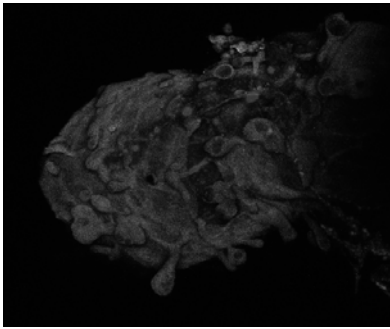


9 wk



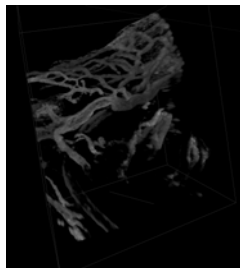
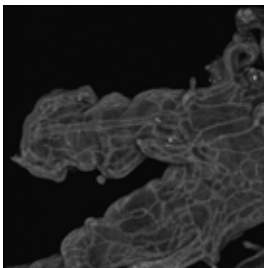
Mola

ErasmusMC
Erasmus

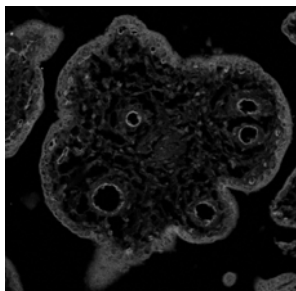


Confocal microsc => I-Space

ErasmusMC
Erasmus



Conclusie



Vascularization
Vasculogenesis
Angiogenesis

Absent (avascular)
empty sac

Reduced development
fetal death
growth retardation

Vessels do not disappear
score 0 - III
