

GnRH-Agonist triggering Meta-analysis and current evidence

B Tarlatzis, MD, PhD

Professor in Assisted Reproduction

Director 1st OB-GYN Clinic, Aristotle University

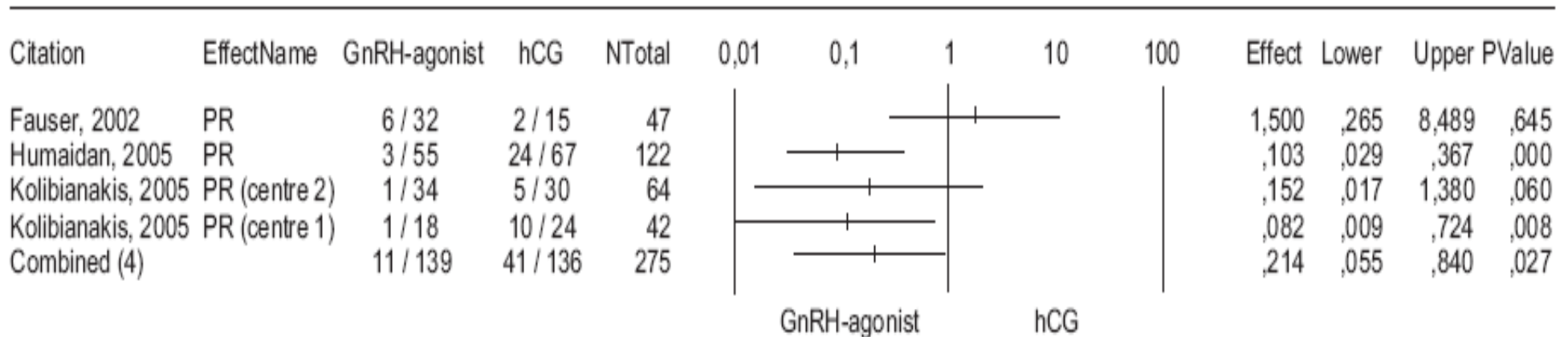
Thessaloniki, Greece

Madrid 2010, ESHRE Campus

Pregnancy rate per patient

Conventional Luteal Support (Past)

Pregnancy rate per randomised patient



GnRH agonist for triggering final oocyte maturation in the GnRH antagonist ovarian hyperstimulation protocol: asystematic review and meta-analysis

Griesinger G, Diedrich K, Devroey P, Kolibianakis E. 2006 Hum Reprod Update

Pregnancy Loss per patient (Past)

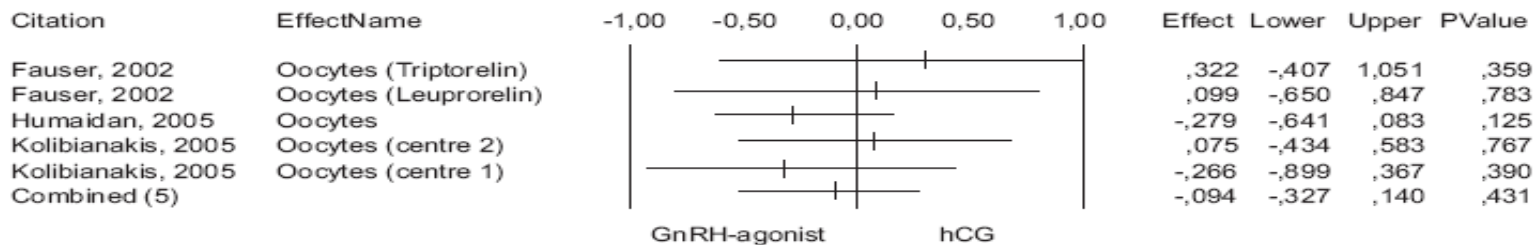
Pregnancy loss

Citation	EffectName	GnRH-agonist	hCG	NTotal	0,01	0,1	1	10	100	Effect	Lower	Upper	PValue
Fauser, 2002	Preg. loss	5 / 11	3 / 5	16						,556	,065	4,755	,590
Humaidan, 2005	Preg. loss	11 / 14	1 / 25	39						88,000	8,201	944,219	,000
Kolibianakis, 2005	Preg. loss (centre 2)	5 / 6	1 / 6	12						25,000	1,200	520,734	,021
Kolibianakis, 2005	Preg. loss (centre 1)	2 / 3	1 / 11	14						20,000	,848	471,576	,031
Combined (4)		23 / 34	6 / 47	81						11,515	,954	138,988	,054

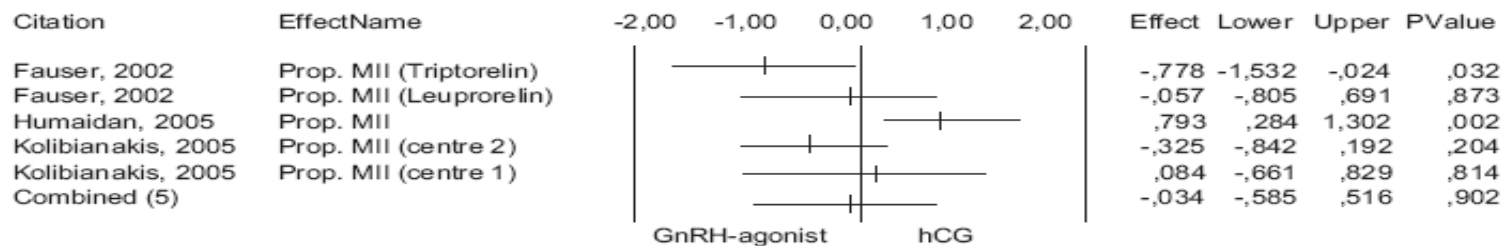
GnRH-agonist hCG

Embryological parameters (Past)

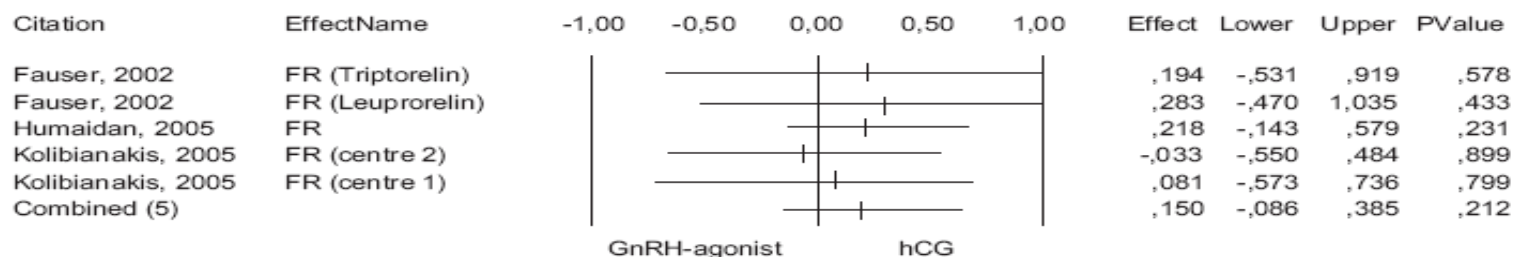
No. of oocytes retrieved



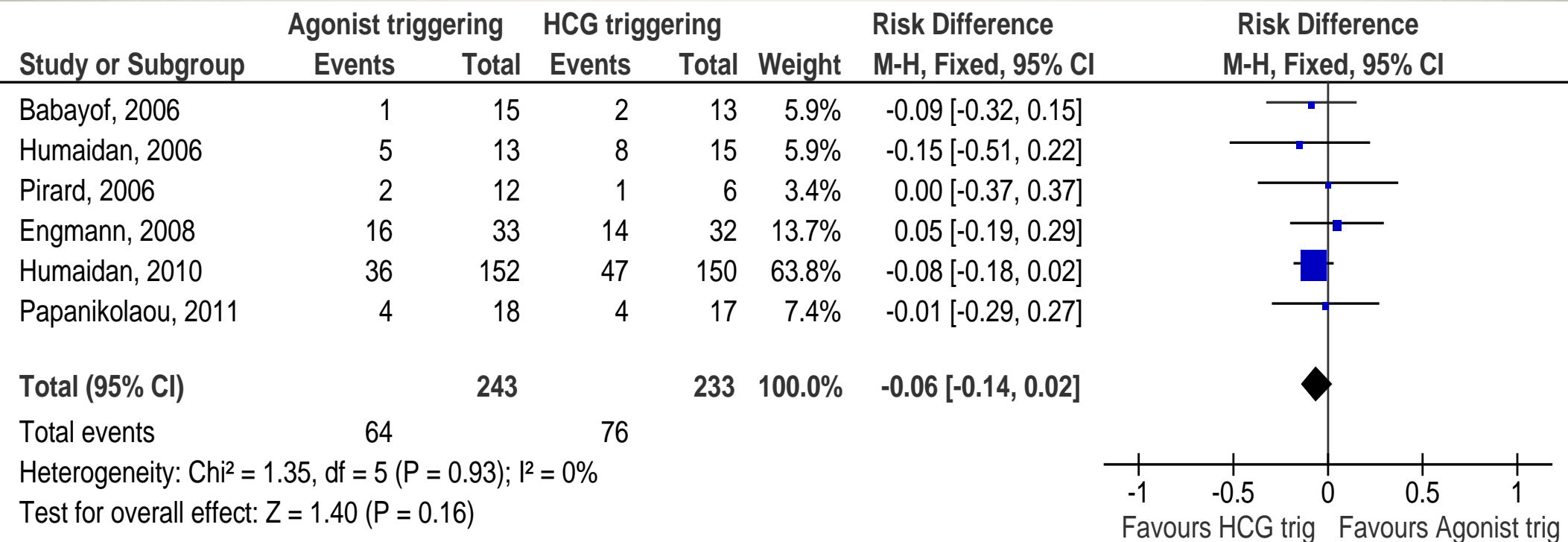
Proportion MII oocytes



Fertilization rate



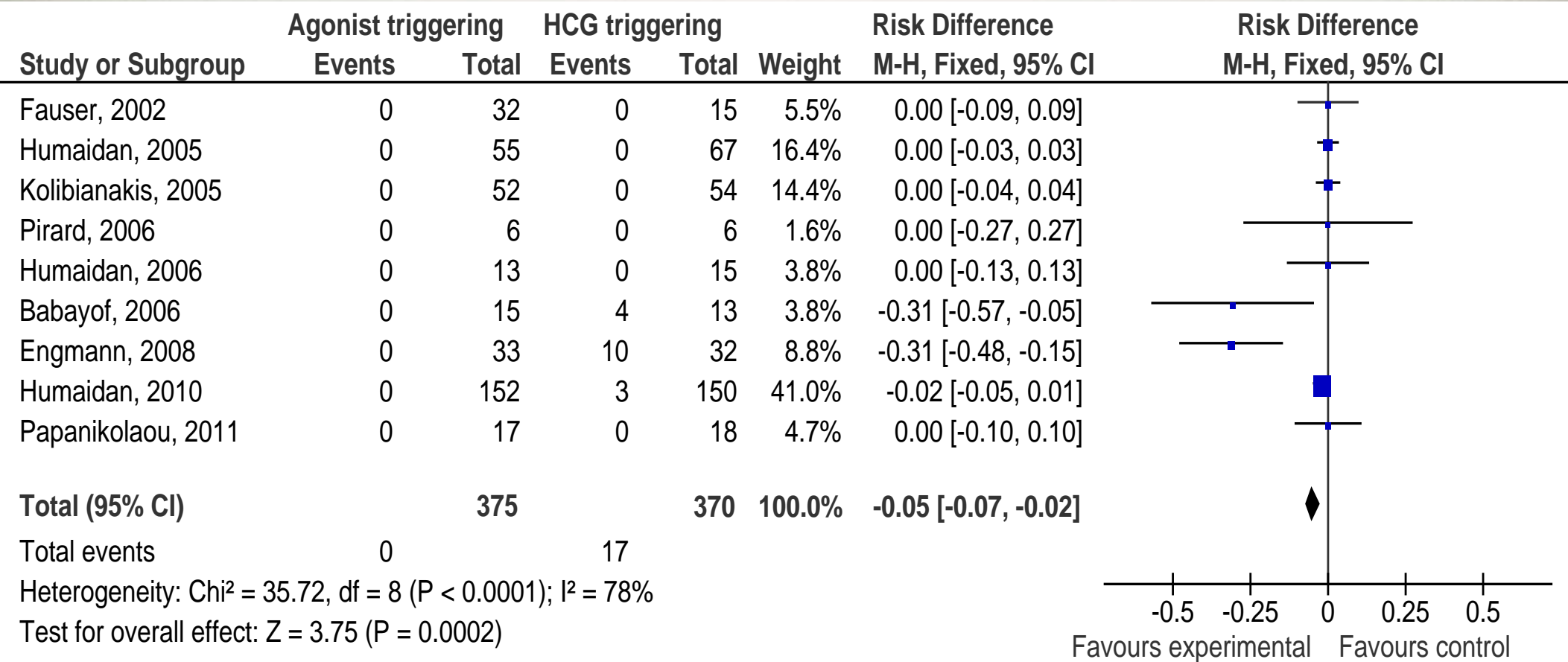
Pregnancy rate in Fresh IVF with ET Modified Luteal Support (Present)



Consensus paper, 2010 submitted

GnRH agonist for triggering of final oocyte maturation: time for a paradigm shift?

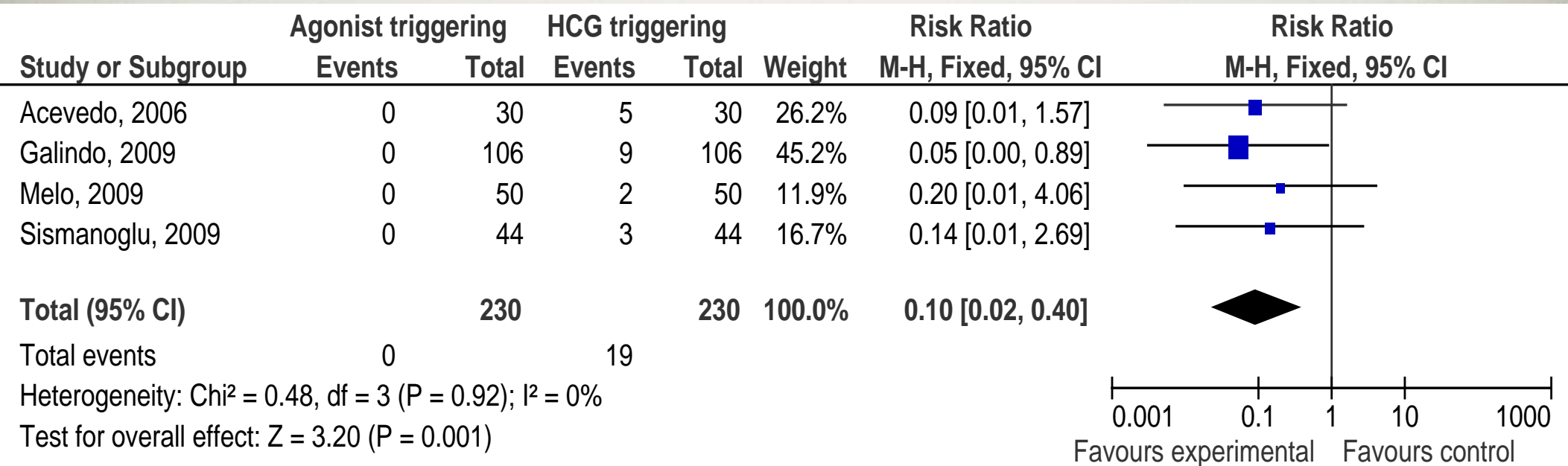
OHSS rate in Fresh IVF with ET (Present)



Consensus paper, 2010 submitted

GnRH agonist for triggering of final oocyte maturation: time for a paradigm shift?

OHSS rate in Oocyte Donation IVF



Consensus paper, 2010 submitted

GnRH agonist for triggering of final oocyte maturation: time for a paradigm shift?

Strategies after Agonist Triggering

Bolus HCG OPU-
day

Luteal Rec-LH

Intense
Progesterone-
Estradiol
Luteal support

Combination

FRALL
Freeze all
embryos

GnRHa to trigger final oocyte maturation: a time to reconsider

- Reduced if not eliminated risk for OHSS
- Challenge is to rescue luteal phase insufficiency
- Primary objective should be Delivery outcome
- In specific high risk patients for OHSS should become the protocol of choice

Humaidan, Papanikolaou and Tarlatzis

Human Reproduction 2009