



### WORKSHOP

#### Indications and patient selection

University Clinical Centre Maribor  
Department of Reproductive Medicine  
Maribor  
SLOVENIA

---

---

---

---

---

---

---

---

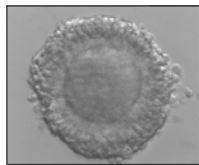
#### Indications : IVF & ICSI

- Natural cycle as substitute for stimulated cycle
- Natural cycle in management of poor responders on COH
- Minimal stimulation and IVM programme for PCOS patients



#### Selection of patients:

- Ovulatory cycles
- Age limit



---

---

---

---

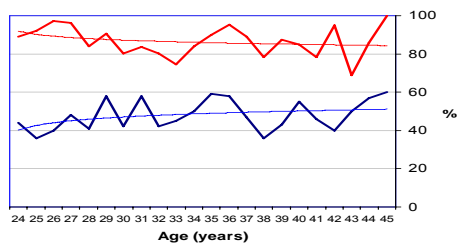
---

---

---

---

Influence of patient age on oocyte pick-up rate and embryo transfer rate per OPU in 1024 natural cycles for IVF/ICSI (Maribor IVF)



---

---

---

---

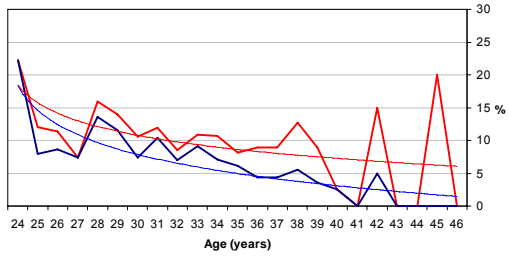
---

---

---

---

Pregnancy rate and delivery rate per oocyte pick-up in 1024 natural cycles for IVF/ICSI ( Maribor IVF)




---

---

---

---

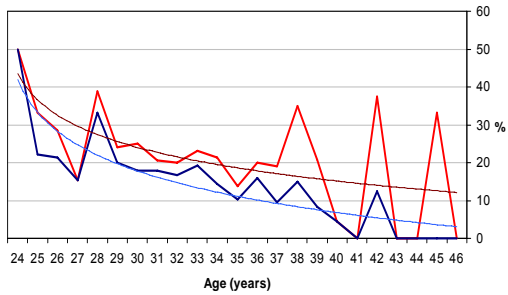
---

---

---

---

Pregnancy rate and delivery rate per embryotransfer after in natural cycles for IVF/ICSI ( Maribor IVF)




---

---

---

---

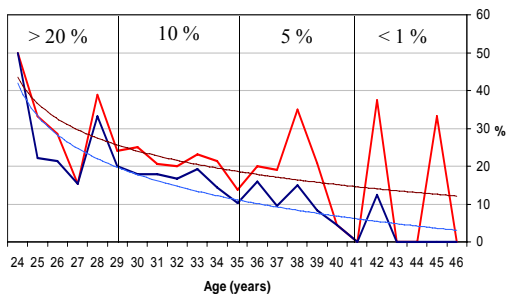
---

---

---

---

Influence of patients age on pregnancy rate and delivery rate per embryotransfer in natural IVF/ICSI cycles ( Maribor IVF)




---

---

---

---

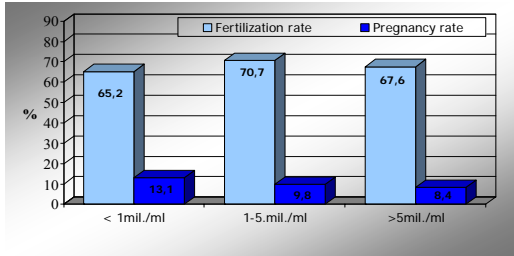
---

---

---

---

Pregnancy rate and fertilization rate related to sperm count



\* Difference is not statistically significant

---

---

---

---

---

---

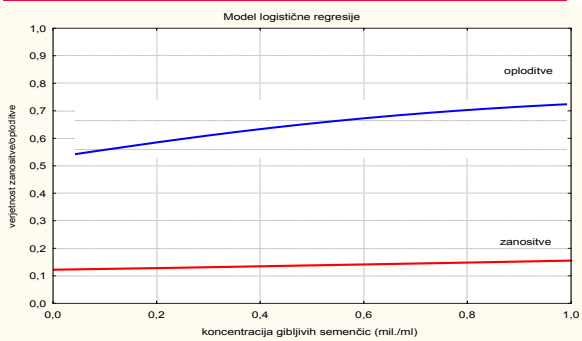
---

---

---

---

Probability of pregnancy and fertilization in natural cycle  
And male factor of infertility with sperm concentration (<1mil./ml)




---

---

---

---

---

---

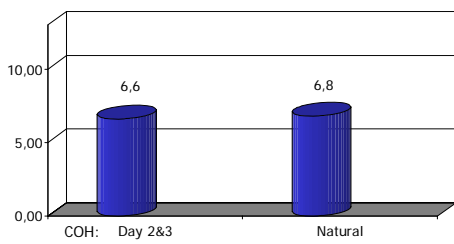
---

---

---

---

Number of embryos required for transfer per baby born



Embryos #: 4934 (COH: Day 2&3), 443 (Natural)

---

---

---

---

---

---


---

---

---

---

**State of the art IVF laboratory :**  
**the most important step ?**  
 The perfect embryo(based on morphology and development)



**Successful implantation after SET in 49% of patients ≤36 yrs**

Papanikolaou et al., NEJM, 2006

---

---

---

---

---

---

---


---

---

---

Article  
**Developmental capacity of different morphological types of day 5 human morulae and blastocysts**

- Implantation capacity depending on blastocyst morphology characteristics.
- Birth rate declined from 45.2% to 7.7% from B1 to B8 quality blastocyst.



Kovačić et al. 2004, RBM Online

---

---

---

---

---

---

---

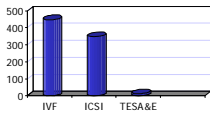
---

---

---

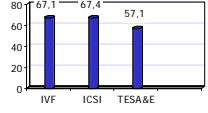
**Implantation outcome in natural IVF/ICSI/TESA cycles**

Number of available oocytes



Method	Number of available oocytes
IVF	~450
ICSI	~350
TESA&E	~100

Fertilization rate per oocyte



Method	Fertilization rate per oocyte (%)
IVF	67.1
ICSI	67.4
TESA&E	57.1

- **532 embryos transferred: 93 implanted (17.5%)**
- **Biochemical pregnancy 6 (6.4%)**
- **Ectopic pregnancy 3 (3.2%)**
- **Clinical abortion 18 (19.3%)**
- **Deliveries 65 (69.9%)**
- **Monozygotic twins 1 (1.5%)**

---

---

---

---

---

---

---

---

---

---