

ESHRE ANNUAL REPORT 2015

European Society of Human
Reproduction and Embryology

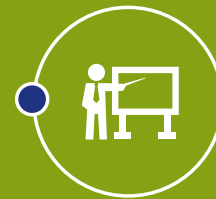


www.eshre.eu



04

ESHRE at a glance



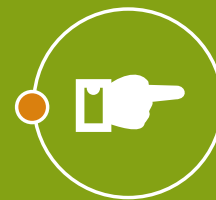
06

Education



10

Journals



12

Guidelines



14

Research
& Data Collection



17

Accreditation
& Certification



20

Financial Report



22

People

Dear friends and colleagues,

I am very pleased to introduce this Annual Report for 2015.

When I took over the chairmanship of ESHRE in June 2015, I knew I was heading a flourishing Society representing the world's leaders in reproductive health and science, organising the biggest event in the field and publishing top journals.

However, little did I know that this very year would also be the year of all records for ESHRE.

1800 abstracts were submitted for our Annual Meeting in Lisbon, where an all time high of 10.088 delegates participated. Another remarkable record was the impact factor of our review journal Human Reproduction Update, which rose to 10.165. It was the first time ever that a journal ranked in the fields of Reproductive Biology and Gynaecology and Obstetrics reached a two-digit impact factor.

I am proud to be chairing such a successful organisation. This success comes, I am convinced, from the dynamism and diversity of our Society, which is illustrated in this annual report. The guidelines, certification programme, the data collections, the Campus courses, and the journals represent some of the many facets of the vitality of ESHRE. I invite you to read this report to see our work and achievements throughout 2015.

ESHRE is what it has become today thanks to the support of its members and all the people who create its strength, excellence and reputation and I would like to thank them all. I invite all of you involved in reproductive science and medicine to join us in pursuit of our mission to promote interest and understanding in this exciting field.

I look forward to continue working with you all towards even more success in the future.

Kersti Lundin

ESHRE Chairman



Kersti Lundin
ESHRE Chairman 2015-2017

01

ESHRE AT A
GLANCE

eshre
SCIENCE MOVING
PEOPLE
MOVING SCIENCE

01

ESHRE AT A GLANCE

I ABOUT ESHRE

The European Society of Human Reproduction and Embryology (ESHRE) is an international non-profit organisation whose main objective is to promote the study of reproductive science and medicine and the treatment of infertility.

ESHRE was founded in 1984 by Robert Edwards and Jean Cohen, who perceived the need for a European organisation dedicated to human reproduction, with its own journal, Annual Meeting and education scheme.

ESHRE is based on the idea that the practice and progress of reproductive medicine are dependent on both scientific and clinical knowledge.

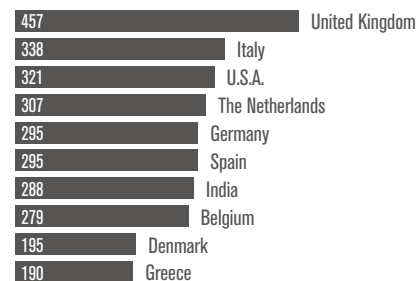


• **ROY FARQUHARSON**

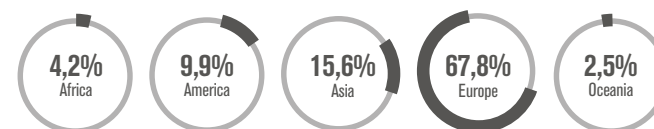
Chairman Elect of ESHRE
2015-2017

THE LEADING SOCIETY IN REPRODUCTIVE SCIENCE AND MEDICINE

TOP 10 - GLOBAL MEMBERSHIP



ESHRE MEMBERS



ESHRE develops a wide range of activities which reflect the ambitions of the Society in education, research and clinical medicine.

With exponential growth since 1984, the Society now comprises more than 6700 members and has become the leading society in reproductive science and medicine.

I ESHRE MEMBERS

ESHRE membership has grown steadily over the years. In 1985, ESHRE had 349 members; 30 years later membership had risen to 6448.

ESHRE membership brings **together many specialties linked to reproductive medicine**, including andrology, embryology, endocrinology, genetics and medical ethics. Around 10% of ESHRE members are lab technicians, nurses or counsellors.

ESHRE members in 2015 were drawn from more than 110 countries, with European members accounting for 67,8% of the global membership. Asian members now represent 15,6% of ESHRE membership, making Asia the second best represented continent of ESHRE membership.

The UK, Italy and the Netherlands were the three leading European countries in 2015, with respectively 457, 336 and 307 members.

The USA and India were the leading non-European countries with 321 and 288 members.



ESHRE AT A GLANCE

Get to know ESHRE and its people by watching the video "be part of the picture" on the ESHRE website www.eshre.eu/bepartofthepicture

02

EDUCATION

09:00 - 17:00
17:00 - 17:30

Monday, 15 June 2015

09:00 - 11:30
12:15

Session 05: Basic science in female infertility
Session 10: Fertility Society of Australia exchange
Session 14: The end of the end? Telomeres in ageing
Session 19: Advances in diagnosis and prevention
Session 24: Long-term consequences of assisted reproduction

2015

win in PGS?
ment and risk
Social media



02 EDUCATION

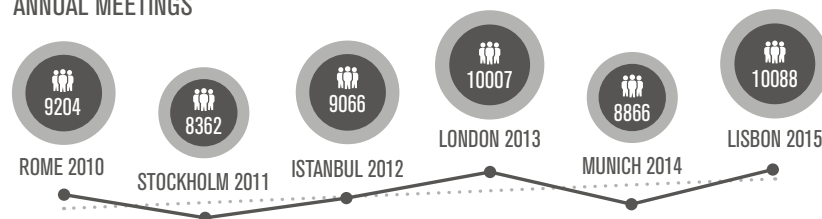
SHARING KNOWLEDGE AND PROVIDING EDUCATION IN REPRODUCTION

I ANNUAL MEETING

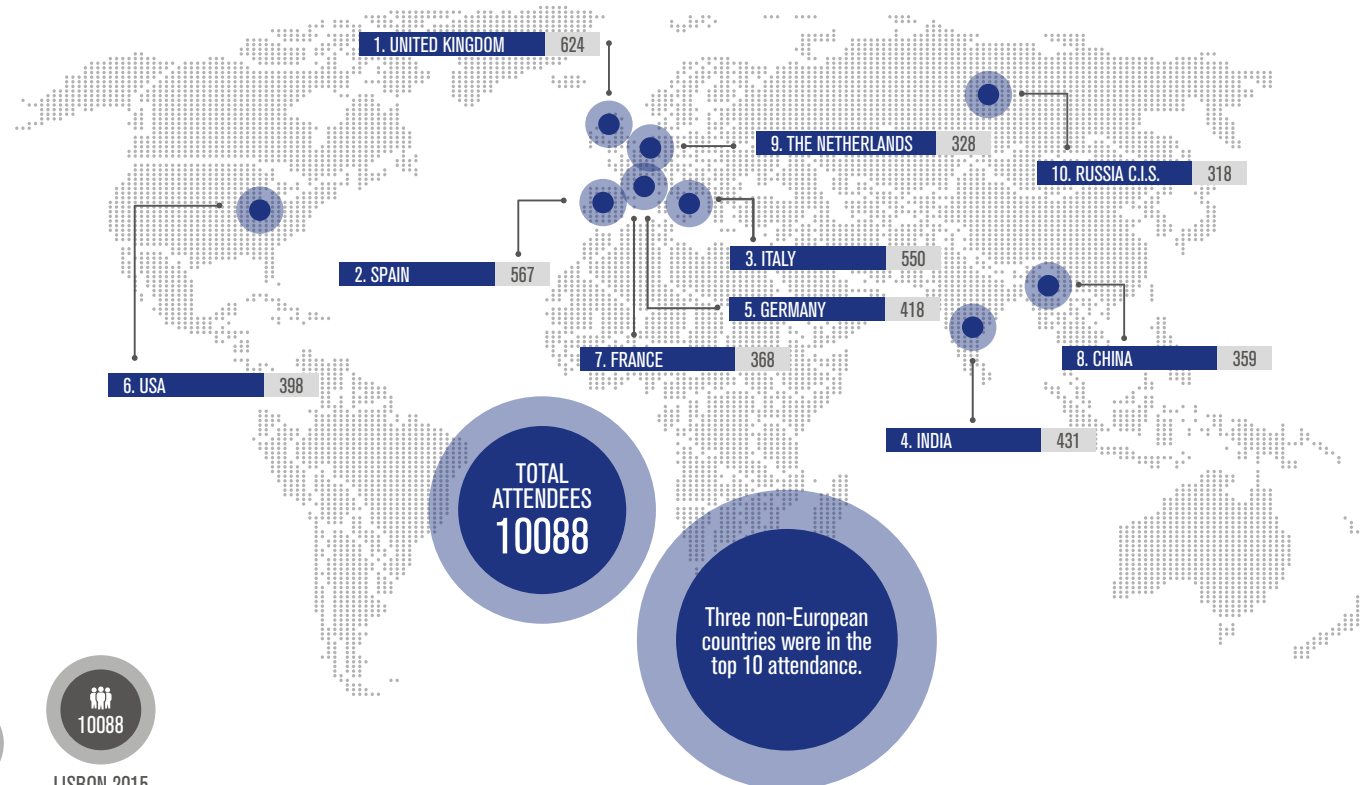
ESHRE's 2015 Annual Meeting - the Society's 31st - was staged in Lisbon, Portugal, from 14 to 17 June 2015 and **broke a new record of 10,088 attendees**. Never had a congress dedicated to reproductive science and medicine attracted such a huge number of delegates. The ESHRE congress is now clearly established as the world's major and best attended event in reproductive science and medicine.

The 2015 Annual Meeting also confirmed its international appeal, with **more than 115 nationalities represented**. Participants from outside Europe are more and more evident: non-Europeans represented 44% of the attendance and Europeans 56%.

ATTENDANCE AT ESHRE ANNUAL MEETINGS



TOP 10 ATTENDANCE AT THE ANNUAL MEETING



02 EDUCATION

I SUNDAY 14 JUNE 2015: PRECONGRESS COURSES

Fourteen Precongress Courses were organised in Lisbon, **attracting 1954 delegates in total**. The best attended courses were hosted by the SIGs Reproductive Endocrinology, Embryology and Reproductive Genetics with respectively 546, 318 and 182 delegates.

66	PCC01: From standardisation to individualisation	
138	PCC02: Keep the sperm in mind when perfecting ART: news and perspectives in spermatology	
318	PCC03: What a clinical embryologist should know on the daily practice	
161	PCC04: Endometriosis and infertility	
82	PCC05: Global (In)fertility: cross-cultural challenges for counsellors	
546	PCC06: When IVF fails: optimal management of recurrent implantation failure	

182	PCC07: Genetic and genomic mechanisms and markers associated with gamete and embryo quality	
47	PCC08: Quality assurance of Ultrasound in Medically Assisted Reproduction (MAR)	
73	PCC09: Early pregnancy and the role of stem cells	
58	PCC10: Current information and communication practices in reproductive medicine: challenged by the internet	
85	PCC11: Challenging Reproductive Surgery	
50	PCC12: Academic Authorship Programme - The A to Z of research: From study design to publication: how to get it right	
92	PCC13: How to provide infertility care for the ageing couple	
56	PCC14: The ABC of infertility management revisited	

I MONDAY 15 TO WEDNESDAY 17 JUNE 2015: MAIN SCIENTIFIC PROGRAMME

The main scientific programme staged 275 oral presentations (with 218 oral communications and 57 invited lectures) and 600 posters. The programme was based on a scored selection made from 1800 abstracts submitted by the deadline of 15 January 2015.

I NEW BOARDS FOR THE SPECIAL INTEREST GROUPS

Most scientific activities of ESHRE rely on the Special Interest Groups (SIGs), which represent the variety of interest within the community of reproductive health and science specialists.

Most of the SIGs held elections during the Annual Meeting in Lisbon and new Co-ordinators and their deputies were established (see page 25 for complete list). Cristina Magli, from Italy, became the new Chair of the SIG Committee.

CRISTINA MAGLI

New Chairman of the
SIG Committee



I ESHRE IN THE NEWS

ESHRE Annual Meetings have built their reputation on the scientific quality of the selected abstracts.

A small selection of this research is presented every year to the international press. **In Lisbon nine abstracts were selected for the press programme, including large-scale and smaller studies of public interest.** Among the highlights of 2015 were the results from a British analysis of nationwide data showing that endometriosis was linked to higher risks of miscarriage and ectopic pregnancies, and a study from Spain on age limits for women using their own eggs in IVF.

02 EDUCATION

I THE BEST OF ESHRE AND ASRM

The fourth edition of the "Best Of" meeting organised jointly by ASRM and ESHRE **took place in New York, USA, from 5 to 7 March 2015** with 856 participants (31% from the USA and 38% from Europe). Highlights of the meeting included cutting-edge presentations on ovarian tissue transplantation and mitochondrial replacement.

I NEW CHAIRMAN AND NEW CHAIRMAN ELECT FOR ESHRE

Swedish embryologist Kersti Lundi took over as ESHRE Chairman from Juha Tapainanen during the General Assembly of Members in Lisbon.

British gynaecologist Roy Farquharson was confirmed as Chairman Elect of ESHRE. According to tradition, the chairmanship of ESHRE alternates between a clinician and a scientist. Farquharson will become Chairman of ESHRE in 2017.

TOTAL
ATTENDEES
835

I CAMPUS EVENTS

ESHRE Campus courses **offer great opportunities for continuing education in reproduction**. Nine Campus events were organised in 2015 in different European countries and in all disciplines represented by ESHRE's SIGs.

The total number of participants in these courses was 835.

"Old and new in reproductive endocrinology" organised by SIG Reproductive Endocrinology and "Donor sperm banking: medical, socio-cultural, ethical and legal considerations" organised by SIGs Andrology, Ethics and Law, Socio-Cultural aspects of (in)fertility both attracted 156 participants, and were the two best attended courses of 2015.

	 124 attendees	Cryopreservation. IVF in the frozen state 27-28 March 2015 Istanbul, Turkey	
	 40 attendees	Complications in reproductive surgery 17-18 April 2015 Lyon, France	
	 156 attendees	Old and new in reproductive endocrinology 24-25 April 2015 Helsinki, Finland	
	 145 attendees	An update on preimplantation genetic screening (PGS) 12-13 March 2015 Rome, Italy	
	 28 attendees	Endoscopy in reproductive medicine 18-20 March 2015 Leuven, Belgium	
	 97 attendees	Basic training course for paramedics working in reproductive health 19-21 March 2015 Lisbon, Portugal	
	 55 attendees	Sexual functioning in women dealing with infertility and/or endometriosis 24-25 September 2015 Leuven, Belgium	
	 34 attendees	Endoscopy in reproductive medicine 28-30 October 2015 Leuven, Belgium	
	 156 attendees	Donor sperm banking: medical, socio-cultural, ethical and legal considerations 10-11 December 2015 Leuven, Belgium	

The background of the slide features a blurred image of an open book, showing its pages and spine. A large, semi-transparent red circle is overlaid on the left side of the image, serving as a backdrop for the text.

03

JOURNALS

03 JOURNALS

HIGH FLYING SCIENTIFIC JOURNALS

I IMPACT FACTORS

ESHRE publishes three high flying scientific journals:

Human Reproduction, *Human Reproduction Update* and *MHR: Basic science of Reproductive medicine*.

Human Reproduction Update **reached a record impact factor** of 10.165 and became the first journal classified in ObGyn and in Reproductive Biology to reach a two-digit impact factor. The journal was ranked first in both categories.

Human Reproduction's impact factor fell to 4.569 and ranked third in the category of Reproductive Biology and fifth in ObGyn.

With an impact factor increasing from 3.483 to 3.747, *MHR: Basic Science of Reproductive Medicine* was the fourth leading journal in the category of Reproductive Biology.

ESHRE's flagship journal *Human Reproduction* regularly features papers approved by the ESHRE Executive Committee for publication in the "ESHRE pages", which are not externally peer-reviewed.

IMPACT FACTORS RANKING ESHRE JOURNALS
(CATEGORY: REPRODUCTIVE BIOLOGY)

NO. 1	HRU	10.165
NO. 3	HR	4.569
NO. 4	MHR	3.747

I ESHRE PAGES IN 2015



The educational and professional status of clinical embryology and clinical embryologists in Europe

Kovačič B, Plas C, Woodward BJ, et al.

Hum Reprod 2015; 30: 1755-1762.

ESHRE PGD Consortium data collection XIII: cycles from January to December 2010 with pregnancy follow-up to October 2011

De Rycke M, Belva F, Goossens V, et al.

Hum Reprod 2015; 30: 1763-1789.

Stem cells in reproductive medicine: ready for the patient?

Vassena R, Eguizabal C, Heindryckx B, et al.

Hum Reprod 2015; 30: 2014-2021.

A European perspective on testicular tissue cryopreservation for fertility preservation in prepubertal and adolescent boys.

Picton HM, Wyns C, Anderson RA, et al.

Hum Reprod 2015; 30: 2463-2475.

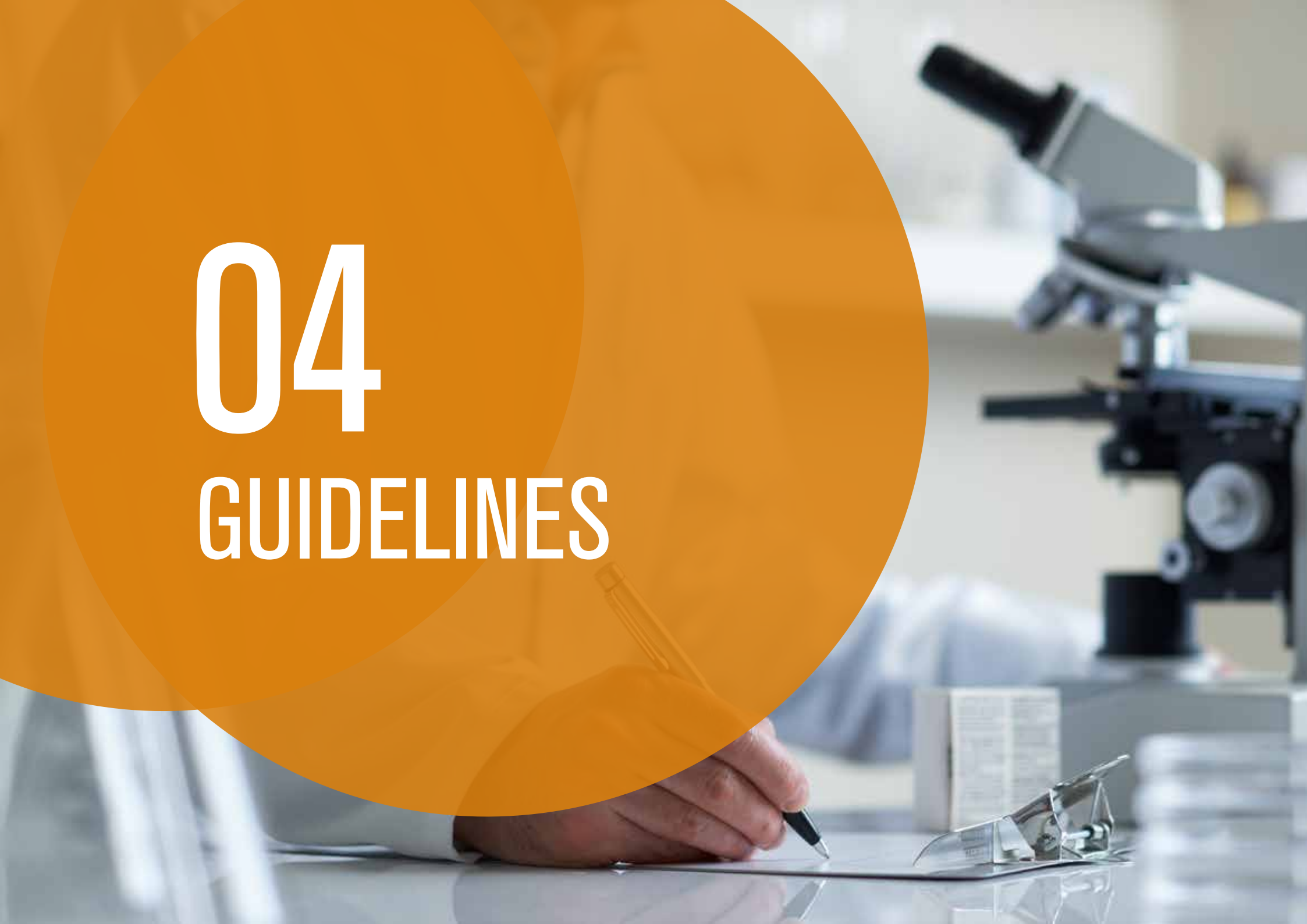
ESHRE guideline: routine psychosocial care in infertility and medically assisted reproduction — a guide for fertility staff.

Gameiro S, Boivin J, Dancet E, et al.

Hum Reprod 2015; 30: 2476-2485.

04

GUIDELINES



04 GUIDELINES

THREE NEW GUIDELINES PUBLISHED



All guidelines published by ESHRE have followed a rigorous methodology as set out in the ESHRE manual for guideline development (published in 2009 and updated in 2014). **Guideline development is now a well established activity within ESHRE.** 2015 was a flourishing year for the ESHRE guidelines, with three new guidelines published.

I ROUTINE PSYCHOSOCIAL CARE IN INFERTILITY AND MEDICALLY ASSISTED REPRODUCTION – A GUIDE FOR FERTILITY STAFF

The full guideline was published on the ESHRE website in April 2015 and in summary in *Human Reproduction* in September 2015. A patient version was also made available.

I MANAGEMENT OF WOMEN WITH PREMATURE OVARIAN INSUFFICIENCY

The full guideline has been published on the ESHRE website in November 2015.

I REVISED GUIDELINE FOR GOOD PRACTICE IN IVF LABORATORIES

The SIG Embryology updated its Revised guidelines for good practice in IVF laboratories, which was published in December 2015.

ONE EXTRA GUIDELINE
IS CURRENTLY BEING
DEVELOPED:



GUIDELINE ON EARLY PREGNANCY LOSS

An initiative of the SIG Early Pregnancy, the full guideline development group was composed in April 2014, literature searches started in September 2014 and the open review took place in September and October 2015. The guideline should be published in 2016.



All information about the ESHRE guideline development programme and guidelines published can be found on the ESHRE website:
www.eshre.eu/guidelines



05

RESEARCH & DATA
COLLECTION

05

RESEARCH & DATA COLLECTION

I EIM CONSORTIUM

ESHRE began monitoring European IVF data in 1997 through the IVF Monitoring (EIM) Consortium. Data are collected on an annual basis by representatives of about 30 countries. The EIM now monitors around 640,000 European cycles per year representing some 80% of total European cycles.

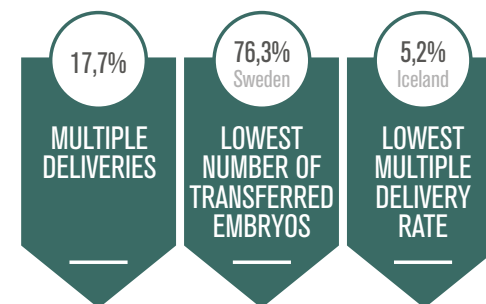


• **CARLOZ CALHAZ-JORGE**

Chairman of the EIM Steering Committee 2015-2017

SCIENCE MOVING PEOPLE

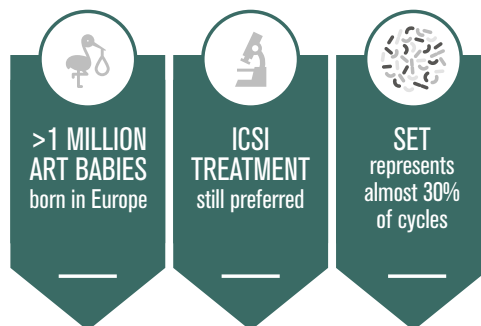
PRELIMINARY RESULTS 2012



Preliminary results from 2012 were also presented at the Annual Meeting in Lisbon and showed that multiple deliveries had again decreased to well below 20% (to 17.7%). SET represented 30% of all procedures. The lowest number of embryos transferred was found in Sweden (single embryo transferred in 76% of cycles) while the lowest multiple delivery rate was found in Iceland (5.2%).

Six European countries reported more than 50,000 cycles a year (France, Germany, Italy, Russia, Spain and UK). The mean pregnancy rate per embryo transfer reported was 33.8% after IVF and 32.3% after ICSI. At the Annual Meeting in Lisbon, Markus Kupka stepped down as Chairman of the Steering Committee of the EIM Consortium. He was replaced by Carloz Calhaz-Jorge. The composition of the committee can be found on page 26.

HIGHLIGHTS



05

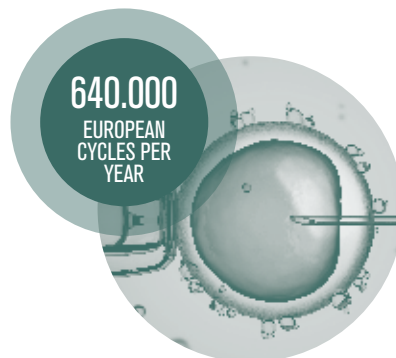
RESEARCH & DATA COLLECTION

I PGD CONSORTIUM

ESHRE's data collection in preimplantation genetic diagnosis began in 1997 through the PGD Consortium, a group of expert members in PGD and PGS. The Consortium focuses on collecting prospective and retrospective data, producing consensus guidelines for PGD laboratories and promoting best practice.

In 2015 much effort was put into the development of a new online database. This was introduced to members during the Consortium meeting in Lisbon with an aim of introduction in 2016.

The HLA working group began a multicentre study for HLA-PGD. A small database was developed and requests to participate sent out to those centres offering HLA-PGD. Data were collected during 2015 and the first results will be available at the Annual Meeting in Helsinki (2016).



I ESTEEM

ESTEEM (the ESHRE Study into The Evaluation of oocyte Euploidy by Microarray analysis) is the first randomised trial of polar body analysis using array CGH for all numerical chromosome abnormalities. The study, which is performed in women between 36 and 41 years, has two primary aims: to estimate the likelihood of having no euploid embryos in ART cycles and to improve live birth rates in women of advanced maternal age.

All centres participating in ESTEEM met at the Annual Meeting of ESHRE in Lisbon where Karen Sermon took over as chair of the working group. Under her supervision and with monthly conference calls to support the centres and to address problems in the most efficient way, the centres continued recruitment of patients to the study.

The centre at Brno withdrew from the study to be replaced by Lübeck, which expects to begin recruitment in 2016.

CENTRES PARTICIPATING IN THE STUDY IN 2015



The background of the slide features a blurred image of a medical stethoscope resting on a thick stack of white papers. A large, semi-transparent red circle is overlaid on the left side of the image, serving as a backdrop for the text.

06

**ACCREDITATION &
CERTIFICATION**

06

ACCREDITATION & CERTIFICATION

I ESHRE CERTIFICATION FOR EMBRYOLOGISTS

ESHRE certification in embryology is a **two-level programme** which aims to encourage the formal recognition of embryologists working in IVF and develop their competence.

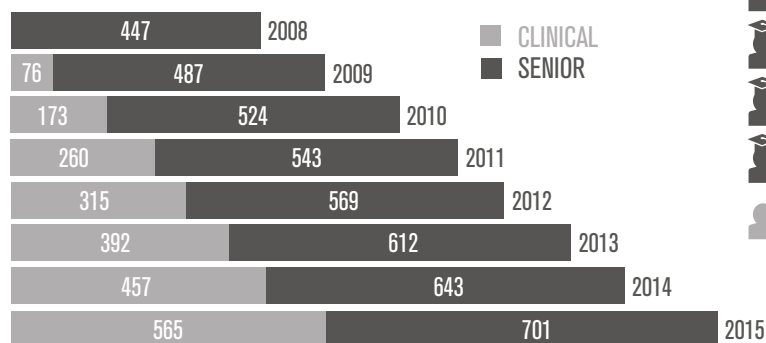
The embryology certification is a competitive and high-level programme. Success rates at the exam in 2015 were 72% for clinical embryologists and 73% for senior embryologists.

The embryology certification programme was introduced in 2008 and interest in the programme has been growing over the years. In 2015 the total number of ESHRE certified embryologist was 1266.

VALIDATING SKILLS, EXPERIENCE AND EXPERTISE

1266
CERTIFIED
EMBRYOLOGISTS

CERTIFIED EMBRYOLOGISTS
(ACCUMULATED)



SUCCESS EXAM 2015



58
PASSED
SENIOR

108
PASSED
CLINICAL

06

ACCREDITATION & CERTIFICATION

I ESHRE CERTIFICATION FOR REPRODUCTIVE ENDOSCOPIC SURGEONS

The ECRES programme was designed for reproductive surgeons who wish to validate their hysteroscopic and laparoscopic skills. It assesses both practical and theoretical skills.

The programme, introduced in 2013, is on two levels: **Primary (level 1) and Master (Level 2)**

In 2015, 10 participants took the exam for the Primary level, of whom seven passed the practical and theoretical tests in Lisbon.



I ESHRE CERTIFICATION FOR NURSES AND MIDWIVES

The ESHRE certification programme for nurses and midwives was launched in 2014.

The programme will allow nurses and midwives with special interest in reproductive health to **validate their skills and experience and to establish their status.**

In 2015 the first exam took place in Lisbon; 51 nurses and midwives from 77 applicants were successful.



I CENTRE ACCREDITATION OF SUBSPECIALIST TRAINING PROGRAMME IN REPRODUCTIVE MEDICINE

ESHRE accreditation of specialist centres operates in collaboration with the European Board and College of Obstetrics and Gynaecology (EBCOG). Accreditation provides a quality label for specialist centres and attests good in-house facilities and expertise to provide adequate training to those wishing to specialise in the treatment of fertility.

In 2015 **three new centres** were accredited in the scheme, which brought the accumulated number of centres with valid accreditation to 11.





07

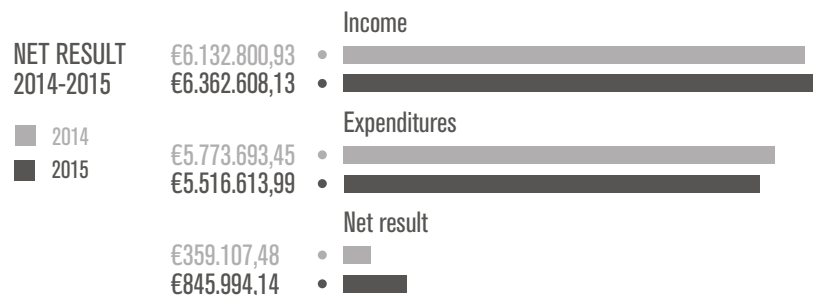
FINANCIAL
REPORT

07

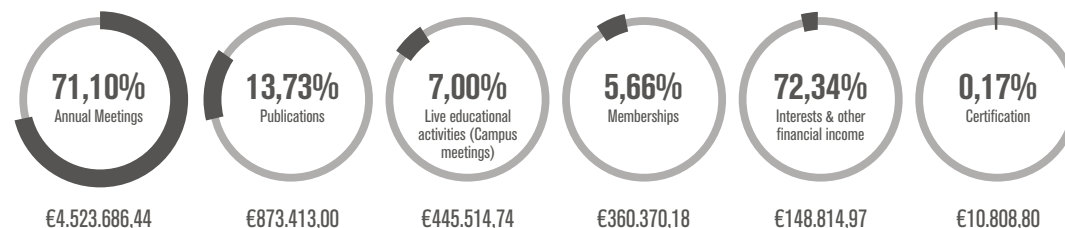
FINANCIAL REPORT

As expected the year 2015 ended with a positive net balance of 845.994,14 euro. Compared to 2014, increases in income were noted for the Annual Meeting (+295.774,56 euro), live educational events (+80.771,06 euro) and membership (+28.116,09 euro). Reduced income was noted for the ESHRE publications (-66.478,72 euro) and from interests and other financial income (-58.831,95 euro). On the expenditure side, decreases were noted – in comparison to 2014 - for the Annual Meeting (-161.401,86 euro), certification/ accreditation (-38.183,29 euro) and financial costs (-75.733,73 euro).

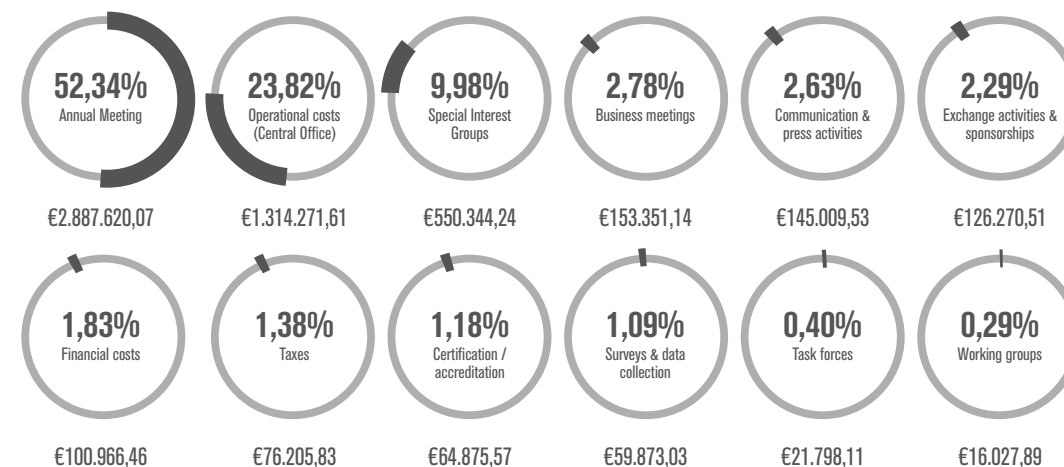
Capital and reserves were at 13.298.731,22 euro at the end of 2015.



INCOME 2015: €6.362.608,13



EXPENDITURES 2015: €5.516.613,99



08

PEOPLE



08 PEOPLE

I COMMITTEES

Executive Committee (2013-2015)

Chairman

Juha Tapanainen (Finland)

Chairman Elect

Kersti Lundin (Sweden)

Members

Carlos Calhaz-Jorge (Portugal)
Jacques De Mouzon (France)
Petra De Sutter (Belgium)
Roy Farquharson (United Kingdom)
Anis Feki (Switzerland)
Georg Griesinger (Germany)
Grigoris Grimbizis (Greece)
Cornelis Lambalk (The Netherlands)
Cristina Magli (Italy)
Tatjana Motrenko Simic (Montenegro)
Andres Salumets (Estonia)

Immediate Past Chairman

Anna Veiga (Spain)

Co-ordinator SIGs

Timur Gürkan (Turkey)

Chairman Paramedical Board

Helen Kendrew

Executive Committee (2015-2017)

Chairman

Kersti Lundin (Sweden)

Chairman Elect

Roy Farquharson (United Kingdom)

Members

Basak Balaban (Turkey)
Petra De Sutter (Belgium)
Mariette Goddijn (The Netherlands)
Grigoris Grimbizis (Greece)
Borut Kovacic (Slovenia)
Nick Macklon (United Kingdom)
Tatjana Motrenko Simic (Montenegro)
Andres Salumets (Estonia)
Rita Vassena (Spain)

Immediate Past Chairman

Juha Tapanainen (Finland)

Co-ordinator SIGs

Cristina Magli (Italy)

Chairman Paramedical Board

Helen Kendrew (United Kingdom)

PEOPLE MOVING SCIENCE

Paramedical Board (2014-2017)

Chairman

Helen Kendrew (United Kingdom)

Members

Valérie Blanchet De Mouzon (France)
Eline Dancet (Belgium)
Annick Geril (Belgium)
Yves Guns (Belgium)
Jolienke Schoonenberg-Pomper
(The Netherlands)
Uschi Van den Broeck (Belgium)
Leonie Van Den Hoven (The Netherlands)
Cecilia Westin (Sweden)

Past-Chairman

Helle Bendtsen (Denmark)

Central Office

Christine Bauquis
Veerle De Rijbel
Veerle Goossens
Karen Maris
Catherine Plas
Erika Mar Rodriguez Raes
Heidi Roijemans
Bruno Van den Eede
Titia Van Roy
Ine Van Wassenhove
Nathalie Vermeulen



08 PEOPLE

Committee of National Representatives

Austria

Thomas Ebner (Basic Scientist)
Ludwig Wildt (Clinician)

Belgium

Greta Verheyen (Basic Scientist)
Frank Vandekerckhove (Clinician)

Bulgaria

Stefka Nikolova (Basic Scientist)
Petya Andreeva (Clinician)

Croatia

Patrik Stanic (Basic Scientist)
Renato Bauman (Clinician)

Cyprus

Mahmut Cerkez Ergoren (Basic Scientist)
Sozos J. Fasoulitis (Clinician)

Denmark

Ursula Bentin-Ley (Clinician)

Estonia

Kristiina Rull (Clinician)

Finland

Laure Morin - Papunen (Clinician)
Sirpa Makinen (Basic Scientist)

France

Catherine Rongieres (Clinician)
Pierre Boyer (Basic Scientist)

Georgia

Lia Chkonia (Basic Scientist)

Germany

Thomas Strowitzki (Clinician)
Verena Nordhoff (Basic Scientist)

Greece

Georgios Pados (Clinician)
Michael Pelekanos (Basic Scientist)

Hungary

Péter Kovács (Clinician)
Peter Fancsovits (Basic Scientist)

Ireland

Aonghus Nolan (Basic Scientist)
Edgar Mocanu (Clinician)

Israel

Eitan Lunenfeld (Clinician)

Italy

Lucia De Santis (Basic Scientist)

Lithuania

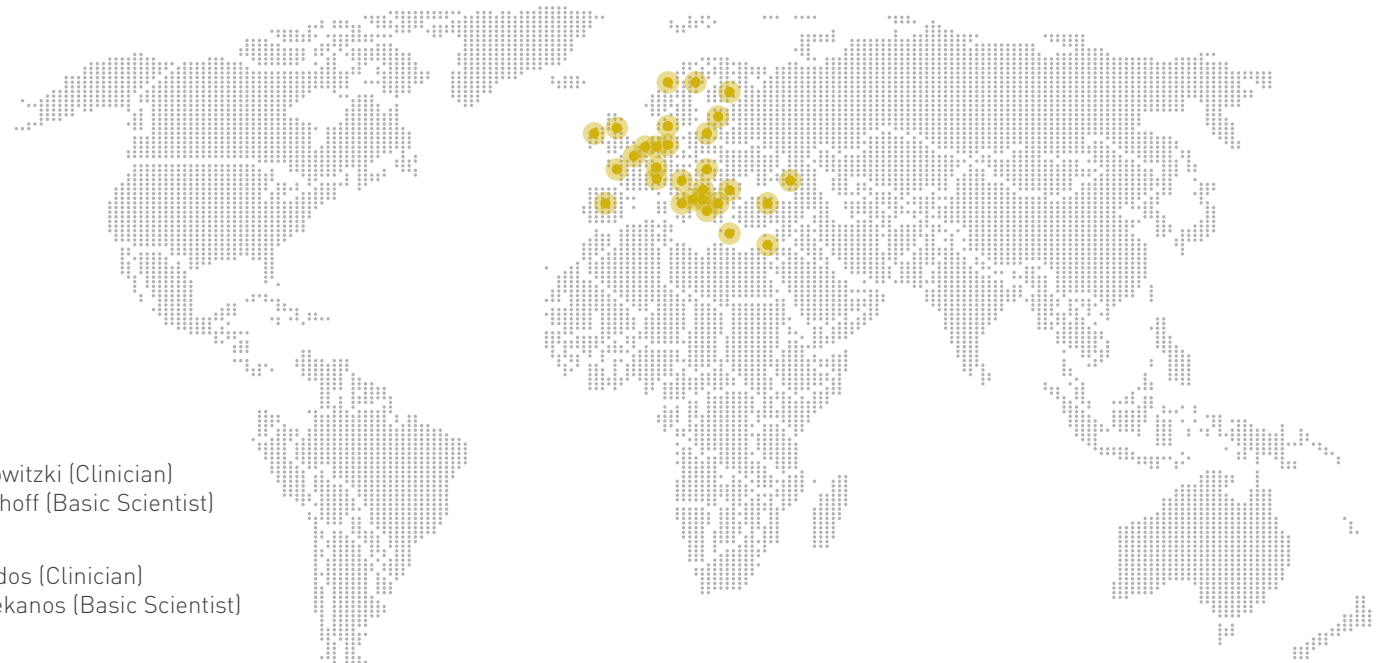
Giedre Belo Lopes (Basic Scientist)

Macedonia

Valentina Sotiroska (Basic Scientist)
Zoranco Petanovski (Clinician)

Netherlands

Velja Mijatovic (Clinician)
Susana M. Chuva de Sousa Lopes
(Basic Scientist)



Norway

Nan Brigitte Oldereid (Clinician)
Anette Bergh (Basic Scientist)

Poland

Robert Spaczynski (Clinician)
Anna Janicka (Basic Scientist)

Romania

Bogdan Doroftei (Clinician)
Monica Marina Dascalescu
(Basic Scientist)

Serbia

Nebojsa Radunovic (Clinician)
Lela Surlan (Basic Scientist)

Slovakia

Ana Ivanova (Basic Scientist)

Slovenia

Irma Virant-Klun (Basic Scientist)
Veljko Vlasisavljevic (Clinician)

Spain

Ernesto Bosch (Clinician)
María José Gómez Cuesta
(Basic Scientist)

Sweden

Lars Björndahl (Basic Scientist)
Pietro Gambadauro (Clinician)

Switzerland

Nicole Fournet Irion (Clinician)
Felix Roth (Basic Scientist)

Turkey

Basak Balaban (Basic Scientist)
Gurkan Uncu (Clinician)

Ukraine

Lyubov Myhailyshyn (Clinician)

United Kingdom

Sheena E.M. Lewis (Basic Scientist)

I SPECIAL INTEREST GROUPS

Andrology (2013-2015)

Stefan Schlatt (DE) | **Co-ordinator**
 Willem Ombelet (BE) | **Deputy**
 Jackson Kirkman-Brown (GB) | **Deputy**
 Victoria Sanchez (VE) | **Junior Deputy**
 Sheena Lewis (GB) | **Past Co-ordinator**

Andrology (2015-2017)

Willem Ombelet (BE) | **Co-ordinator**
 Jackson Kirkman-Brown (UK) | **Deputy**
 Ellen Goossens (BE) | **Deputy**
 Heloisa Lavorato (DE) | **Junior Deputy**
 Stefan Schlatt (DE) | **Past Co-ordinator**
 Lars Bjorndahl (SE) | **SIG education sub-committee member**
 David Mortimer (CA) | **International advisor**

Early pregnancy (2014-2017)

Siobhan Quenby (GB) | **Co-ordinator**
 Emma Kirk (GB) | **Deputy**
 Astrid Marie Kolte (DK) | **Junior Deputy**
 Mariëtte Goddijn (NL) | **Past Co-ordinator**

Embryology (2013-2015)

Maria José de los Santos (ES) | **Co-ordinator**
 Sophie Debrock (BE) | **Deputy**
 Giovanni Coticchio (IT) | **Deputy**
 Susanna Apter (SE) | **Junior Deputy**
 Kersti Lundin (SE) | **Past Co-ordinator**
 Carlos Plancha (PT) | **Basic science**

Embryology (2015-2017)

Giovanni Coticchio (IT) | **Co-ordinator**
 Sophie Debrock (BE) | **Deputy**
 Susanna Apter (SE) | **Deputy**
 Debbie Montjean | **Junior Deputy**
 Maria José de los Santos (ES) | **Past Co-ordinator**
 Roger Sturmey | **Basic Science Officer**

Endocrinology (2013-2015)

Efstratios Kolibianakis (GR) | **Co-ordinator**
 Frank J. Broekmans (NL) | **Deputy**
 Daniela Romualdi (IT) | **Deputy**
 Terhi Piltonen (FI) | **Junior Deputy**
 Georg Griesinger (DE) | **Past Co-ordinator**

Endocrinology (2015-2017)

Frank J. Broekmans (NL) | **Co-ordinator**
 Daniela Romualdi (IT) | **Deputy**
 Peter Humaidan (DK) | **Deputy**
 Georgios Lainas (UK) | **Junior Deputy**
 Efstratios Kolibianakis (GR) | **Past Co-ordinator**

Endometriosis and Endometrium (2012-2015)

Gerard Dunselman (NL) | **Co-ordinator**
 Michelle Nisolle (BE) | **Deputy**
 Andrew Horne (GB) | **Deputy**
 Carla Tomassetti (BE) | **Junior Deputy**
 Hilary Critchley (GB) | **Past Co-ordinator**

Endometriosis and Endometrium (2015-2017)

Andrew Horne (UK) | **Co-ordinator**
 Carla Tomassetti (BE) | **Deputy**
 Andrea Romano (NL) | **Deputy**
 Antonio Simone Lagana (IT) | **Junior Deputy**
 Krina Zondervan (UK) | **Basic Science Officer**
 Lone Hummelshoj (UK) | **International Advisor**
 Gerard Dunselman (NL) | **Past Co-ordinator**

Ethics and Law (2013-2015)

Veerle Provoost (BE) | **Co-ordinator**
 Guido Pennings (BE) | **Deputy**
 Wybo Dondorp (NL) | **Past Co-ordinator**

Ethics and Law (2015-2017)

Guido Pennings (BE) | **Co-ordinator**
 Guido De Wert (NL) | **Deputy**
 Lucy Frith (UK) | **Deputy**
 Veerle Provoost (BE) | **Past Co-ordinator**

Psychology and Counseling (2013-2015)

Uschi Van den Broeck (BE) | **Co-ordinator**
 Sofia Gameiro (GB) | **Deputy**
 Cora de Klerk (NL) | **Deputy**
 Mariana Martins (PT) | **Junior Deputy**
 Christianne Verhaak (NL) | **Past Co-ordinator**

Psychology and Counseling (2015-2017)

Sofia Gameiro (UK) | **Co-ordinator**
 Mariana Martins (PT) | **Deputy**
 Giuliana Baccino (SP) | **Deputy**
 Juliana Pedro (PT) | **Junior Deputy**
 Uschi Van den Broeck (BE) | **Past Co-ordinator**

Quality and Safety in ART (2013-2015)

Willianne Nelen (NL) | **Co-ordinator**
 Arianna D'Angelo (GB) | **Deputy**
 Kelly Tillemann (BE) | **Deputy**
 Daniele Nogueira (FR) | **Junior Deputy**
 Petra De Sutter (BE) | **Past Co-ordinator**

Quality and Safety in ART (2015-2017)

Arianna D'Angelo (UK) | **Co-ordinator**
 Kelly Tillemann (BE) | **Deputy**
 Ioana Adina Rugescu (RO) | **Deputy**
 Zdravka Veleva (FI) | **Junior Deputy**
 Augusto Enrico Semprini (IT) | **International Advisor**
 Daniela Nogueira (FR) | **Basic Science Officer**
 Willianne Nelen (NL) | **Past Co-ordinator**

08 PEOPLE

>>

Reproductive Genetics (2013-2015)

Ursula Eichenlaub (GE) | **Co-ordinator**
 Claudia Spits (BE) | **Deputy**
 Tania Milachich (BG) | **Deputy**
 Georgia Kakourou (GR) | **Junior Deputy**
 Joyce Harper (UK) | **Past Co-ordinator**

Reproductive Genetics (2015-2017)

Claudia Spits (BE) | **Co-ordinator**
 Tania Milachich (BG) | **Deputy**
 Georgia Kakourou (GR) | **Deputy**
 Signe Altmäe (EE) | **Junior Deputy**
 Ursula Eichenlaub (DE) | **Past Co-ordinator**

Reproductive Surgery (2013-2015)

Tin-Chiu Li (GB) | **Co-ordinator**
 Grigoris Grimbizis (GR) | **Deputy**
 Antoine Watrelot (FR) | **Deputy**
 Sotirios Saravelos (GB) | **Junior Deputy**
 Vasilios Tanos (GR) | **Past Co-ordinator**

Reproductive Surgery (2015-2017)

Antoine Watrelot (FR) | **Co-ordinator**
 Michelle Nisolle (BE) | **Deputy**
 Razvan Vladimir Socolov (RO) | **Deputy**
 Filipa Beja Osório | **Junior Deputy**
 Tin-Chiu Li (GB) | **Past Co-ordinator**

Socio-cultural aspects of (in)fertility (2013-2016)

Françoise Shenfield (UK) | **Co-ordinator**
 Paul Devroey (BE) | **Deputy**
 Anna Pia Ferraretti (IT) | **Deputy**
 Virginie Rozée (FR) | **Junior Deputy**

Stem Cells (2013-2015)

Rita Vassena (ES) | **Co-ordinator**
 Cristina Eguizabal (ES) | **Deputy**
 Björn Heindryckx (BE) | **Deputy**
 Filippo Zambelli (IT) | **Junior Deputy**
 Karen Sermon (BE) | **Past Co-ordinator**

Stem Cells (2015-2017)

Björn Heindryckx (BE) | **Co-ordinator**
 Cristina Eguizabal (SP) | **Deputy**
 Susana M. Chuva de Sousa Lopes (NL) | **Deputy**
 Mieke Geens (BE) | **Junior Deputy**
 Rita Vassena (ES) | **Past Co-ordinator**

I CONSORTIA

European IVF Monitoring (2013-2015)

Markus Kupka (DE) | **Chair**
 Carlos Calhaz-Jorge (PT) | **Chair elect**
 Jose Antonio Castilla Alcala (ES)
 Karin Erb (DK)
 Carlos Calhaz-Jorge (PT)
 Christian de Geyter (CH)
 Jacques de Mouzon (FR) | **Representative from the Executive Committee**
 Anna Pia Ferraretti (IT) | **Past Chair**

European IVF Monitoring (2015-2017)

Carlos Calhaz-Jorge (PT) | **Chair**
 Christian de Geyter (CH) | **Chair elect**
 Karin Erb (DK)
 Edgar Vasile Mocanu (IRL)
 Giulia Scaravelli (IT)
 Christine Wyns (BE)
 Jacques De Mouzon (FR)
 Tatjana Motrenko Simic (MO) | **Representative from the Executive Committee**
 Markus Kupka (DE) | **Past Chair**

PGD Consortium (2014-2016)

Edith Coonen (NL) | **Chair**
 Sioban SenGupta (GB) | **Chair elect**
 Martine De Rycke (BE)
 Céline Moutou (FR)
 Georgia Kokkali (GR)
 Veerle Goossens (BE) | **ESHRE Science Manager**
 Joanne Traeger-Synodinos (GR) | **Past Chair**

I HONORARY MEMBERS 2015

Stephen Hillier
 Paul Devroey

www.eshre.eu



ALL RIGHTS RESERVED. JUNE 2015.

EDITORIAL COMMITTEE | Susanna Apter, Simon Brown, Hans Evers, Roy Farquharson, Kersti Lundin, Nick Macklon, Juha Tapanainen, Bruno Van den Eede, Rita Vassena, Anna Veiga, Christine Bauquis (Editor)

Thanks to Veerle Goossens, Catherine Plas, Heidi Roijemans, Titia Van Roy and Nathalie Vermeulen for their contribution.

This Annual Report is published by the European Society of Human Reproduction and Embryology, Meerstraat 60, Grimbergen, Belgium. www.eshre.eu

