



European Society of  
Human Reproduction and Embryology

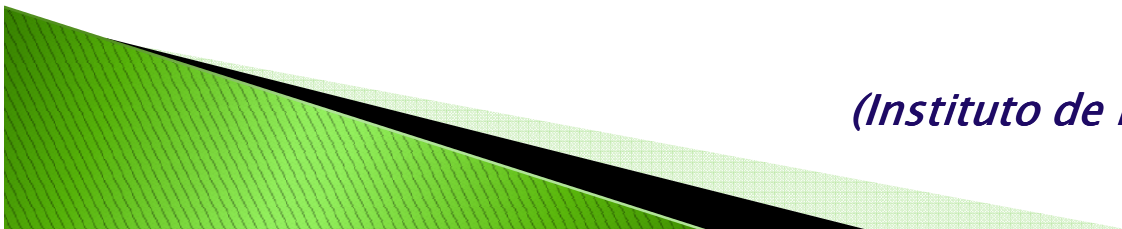


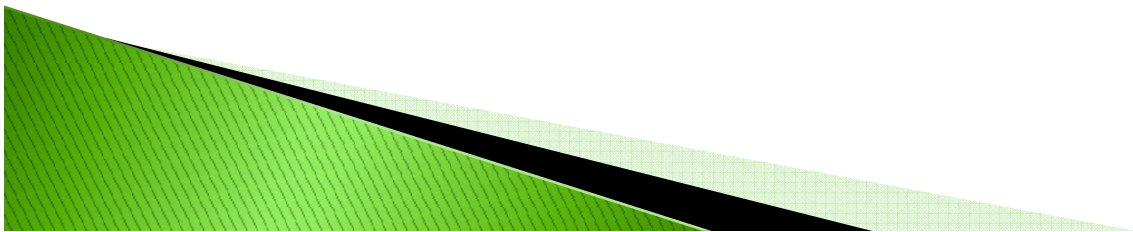
**Anatomía Masculina y Femenina, Fisiología  
(incluido el ciclo menstrual)**

**Male and Female Anatomy, Physiology  
(including the menstrual cycle)**

*Glenda Y. Vázquez Hernández  
Enfermera Quirúrgica  
Surgical Nurse  
I.R.M.O*

*(Instituto de Reproducción Maques de Oliveira)*





# Basic training course for nurses and support personnel working in reproductive health



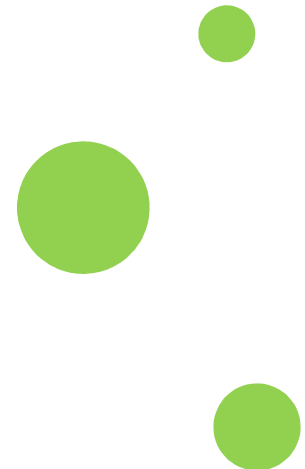
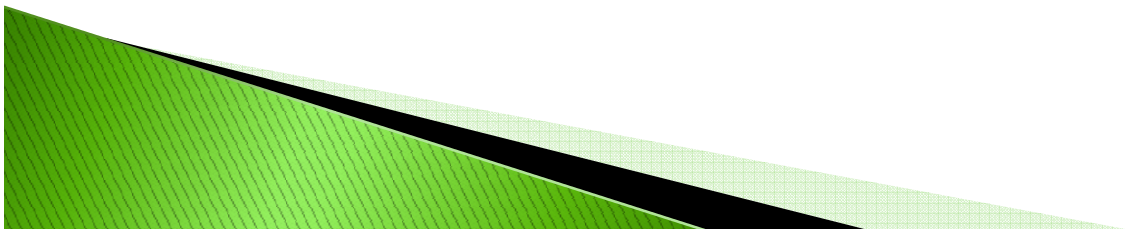
# Anatomía Masculina y Femenina, Fisiología (incluido el ciclo menstrual)

## Male and Female Anatomy, Physiology (including the menstrual cycle)

---

---

- El embrión y la diferenciación sexual  
The embryo and sexual differentiation
- Anatomía Masculina  
Male anatomy
- Anatomía Femenina  
Female anatomy

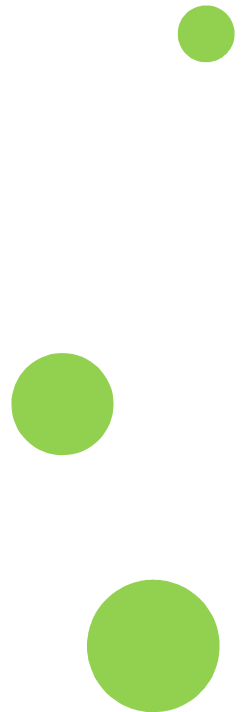
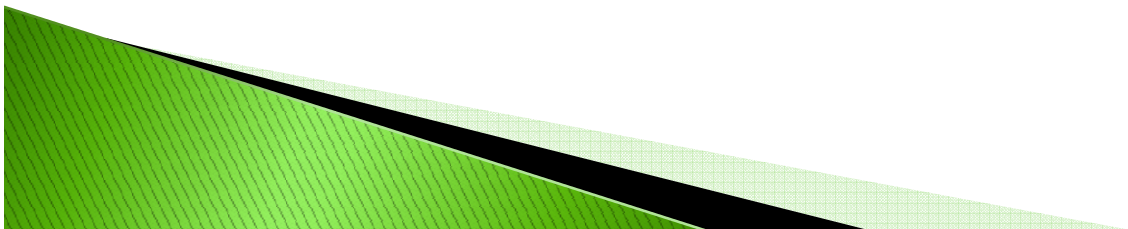


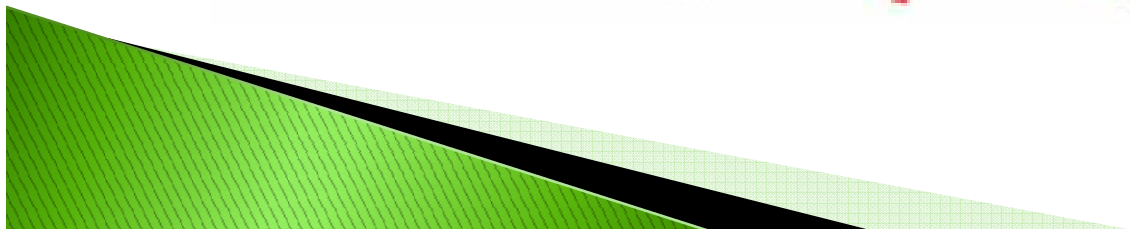
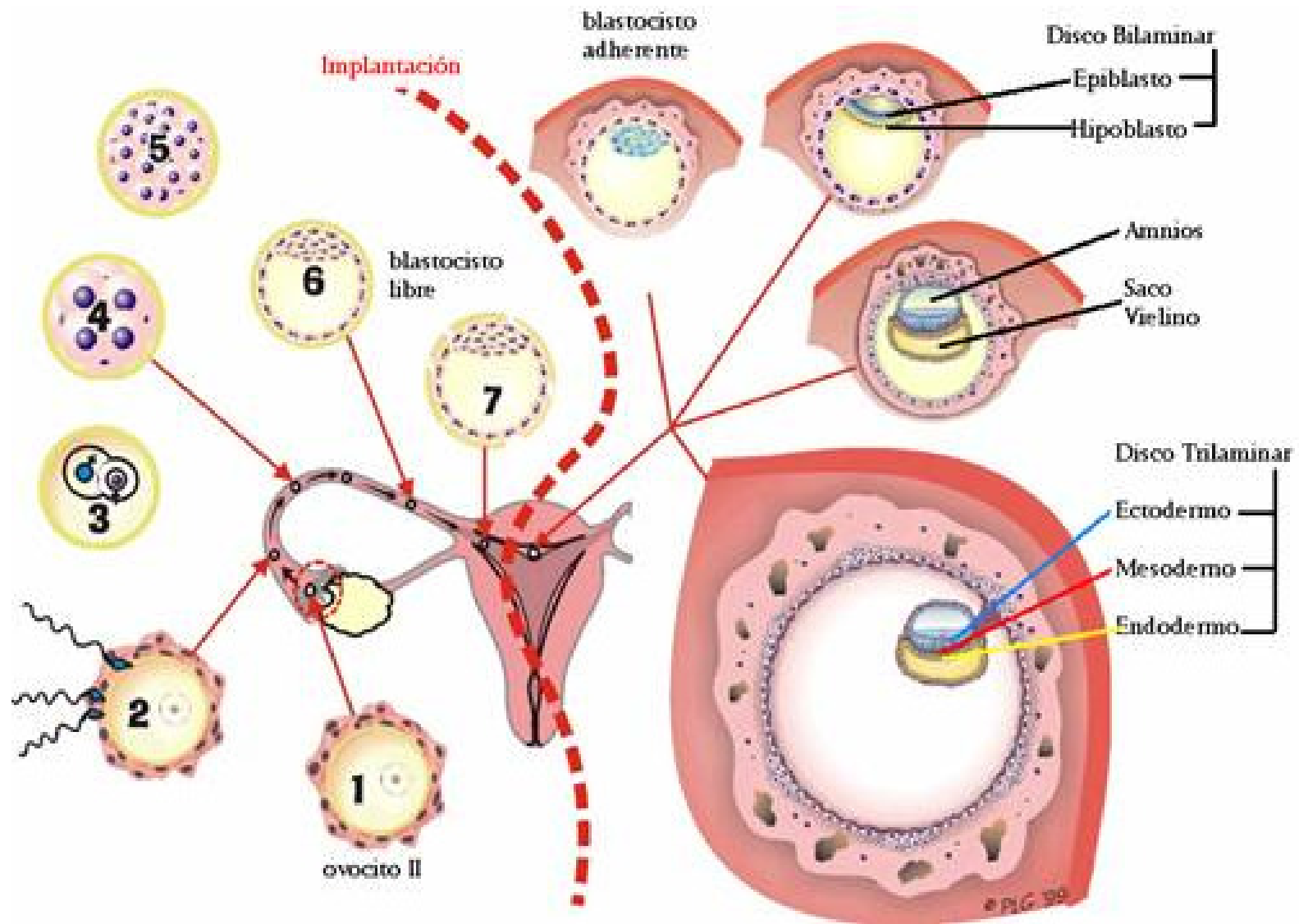
**Anatomía Masculina y Femenina, Fisiología  
(incluido el ciclo menstrual)  
Male and Female Anatomy, Physiology  
(including the menstrual cycle)**

---

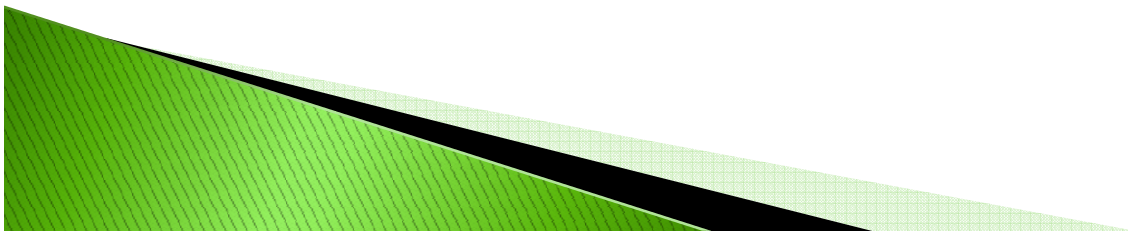
---

- **Función de los testículos  
Testicular function**
- **Función de los ovarios  
Ovarian function**
- **Ciclo Ovárico  
Ovarian Cycle**
- **La Pelvis, contenido y continente  
content and container pelvis**





# Embriogenesis



# Diferenciación sexual

## Sexual differentiation



- ▶ El primer signo de la diferenciación sexual aparece en la superficie ventral
- ▶ The first sign of sexual differentiation appears in the ventral surface



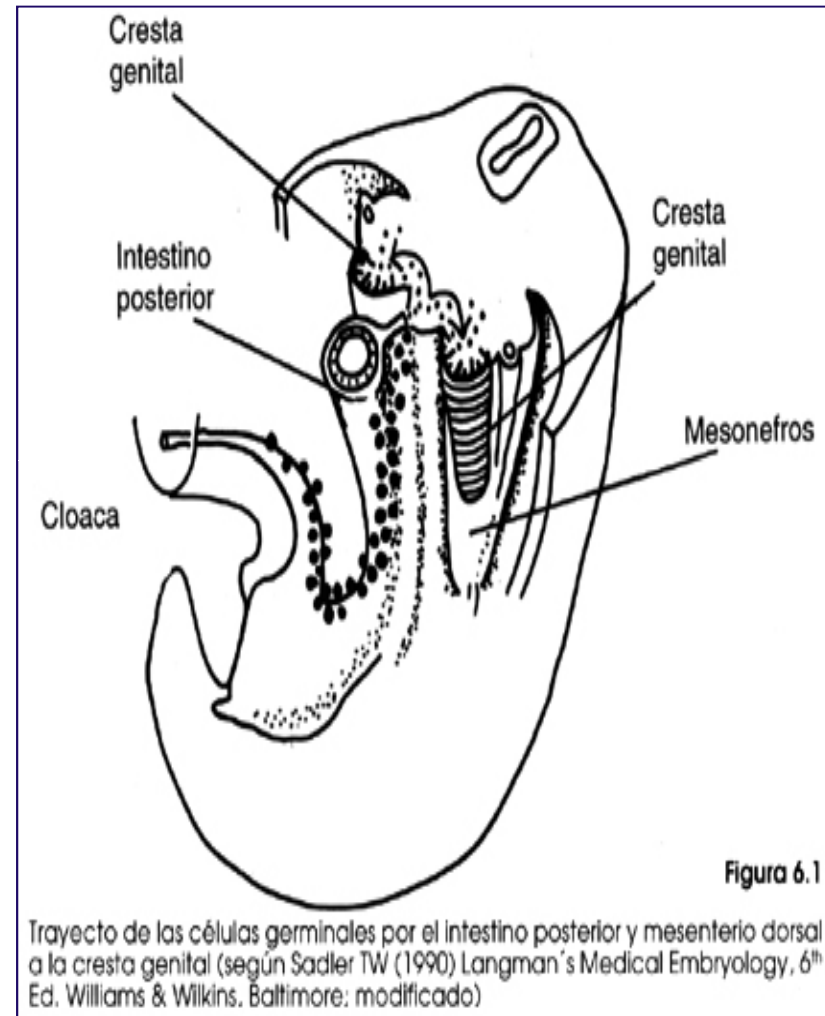
# Células Germinales

## Germ cells

Células germinales migran hacia el embrión desde el saco vitelino  
Las gónadas indiferenciadas se forman en el interior de la cresta genital.

Germ cells migrate to the embryo from the yolk sac

The undifferentiated gonads are formed within the genital ridge.



# División celular

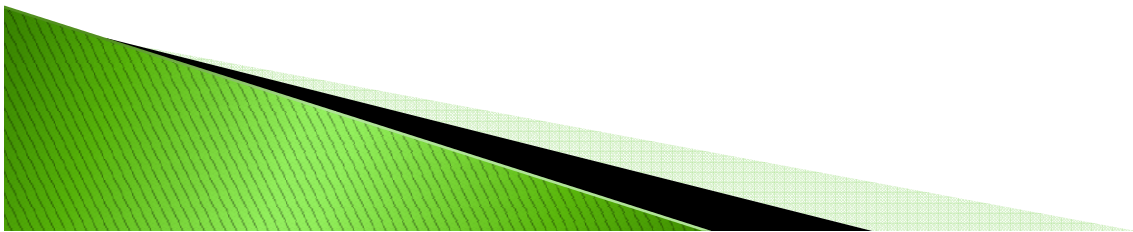
## Mitosis

División de la célula y multiplicación

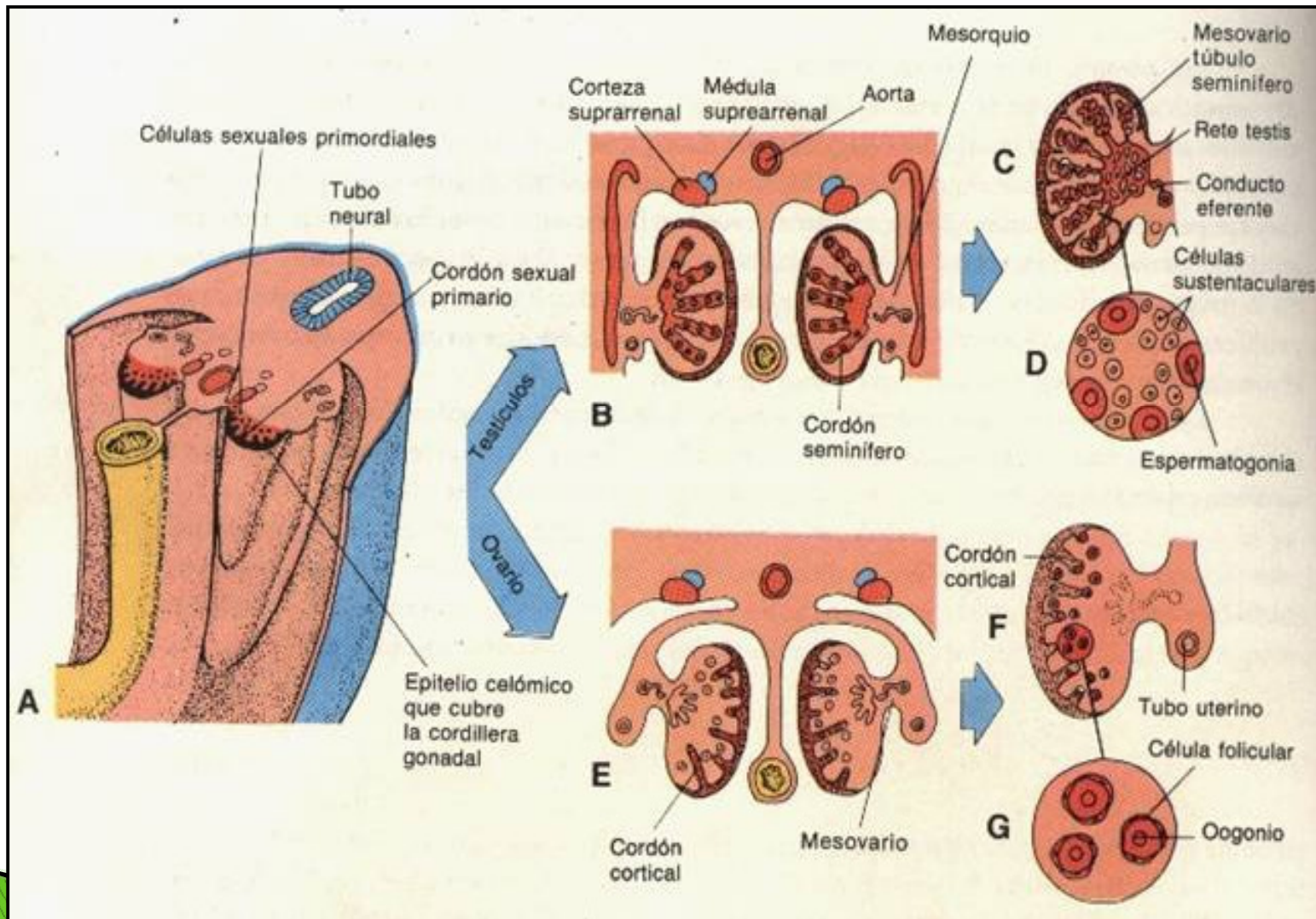
- ▶ Cell division and multiplication .

## Meiosis

- ▶ Reducción de la división, de  $2n$  a  $1n$ .
- ▶ Cromosomas propios de la especie.
  
- ▶ Reduction division,  $2n$  to  $1n$ .  
Chromosomes characteristic of the species.

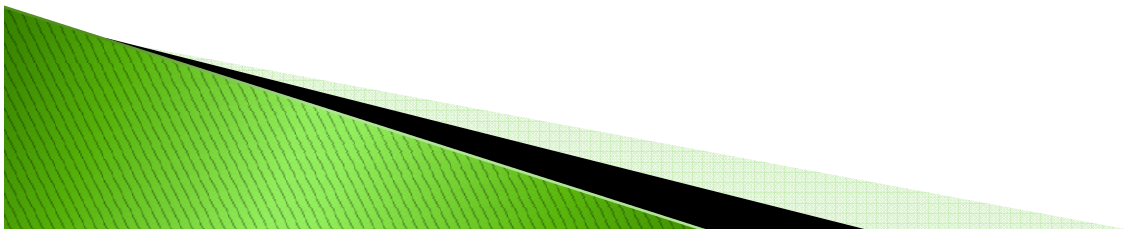
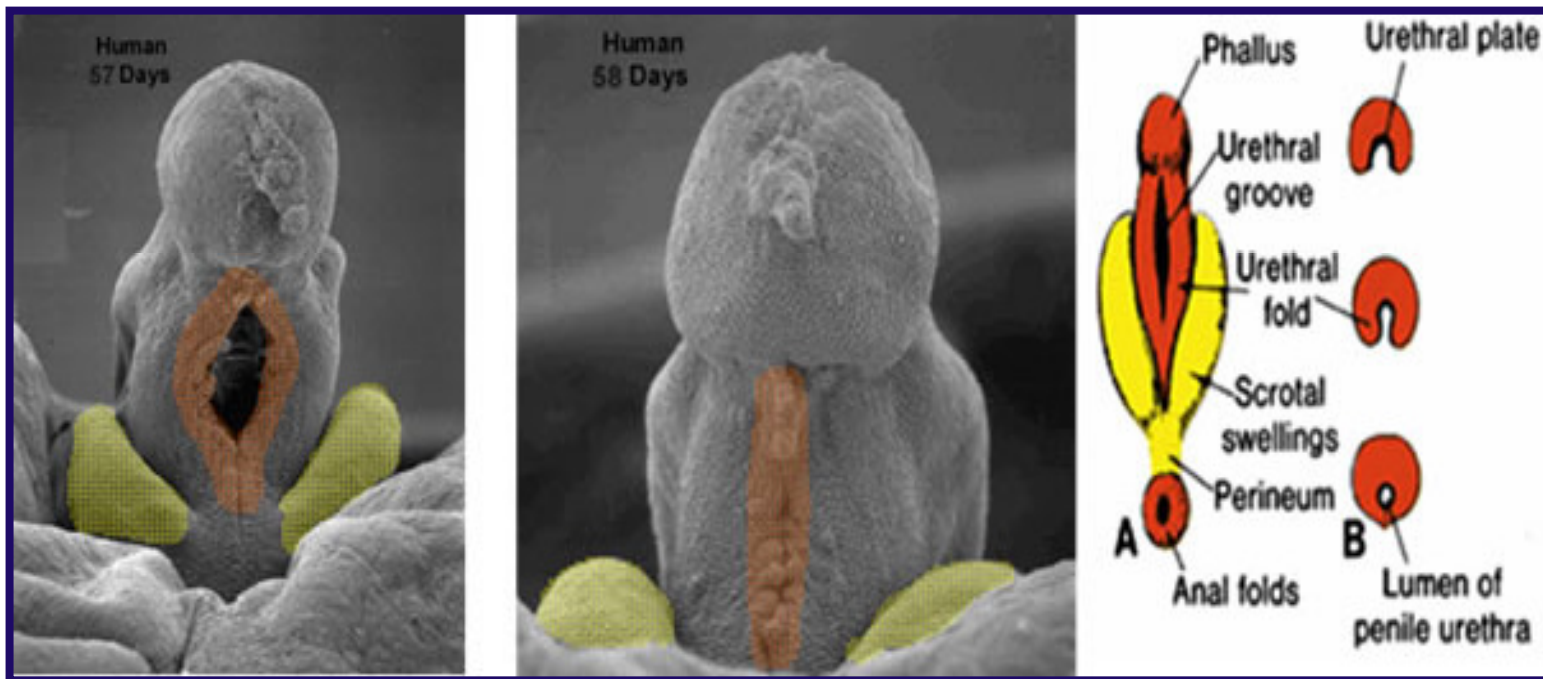


# Origen de la estructuras.



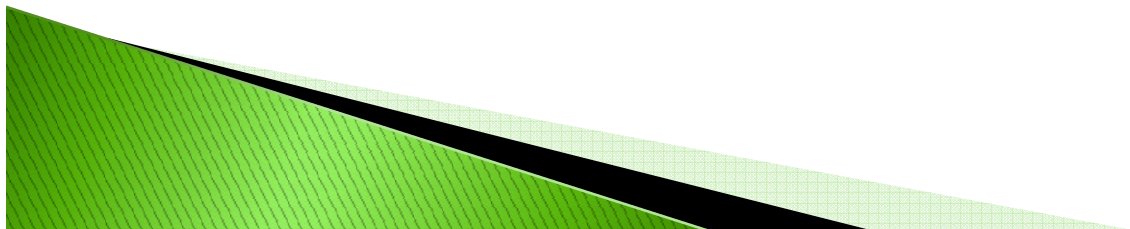
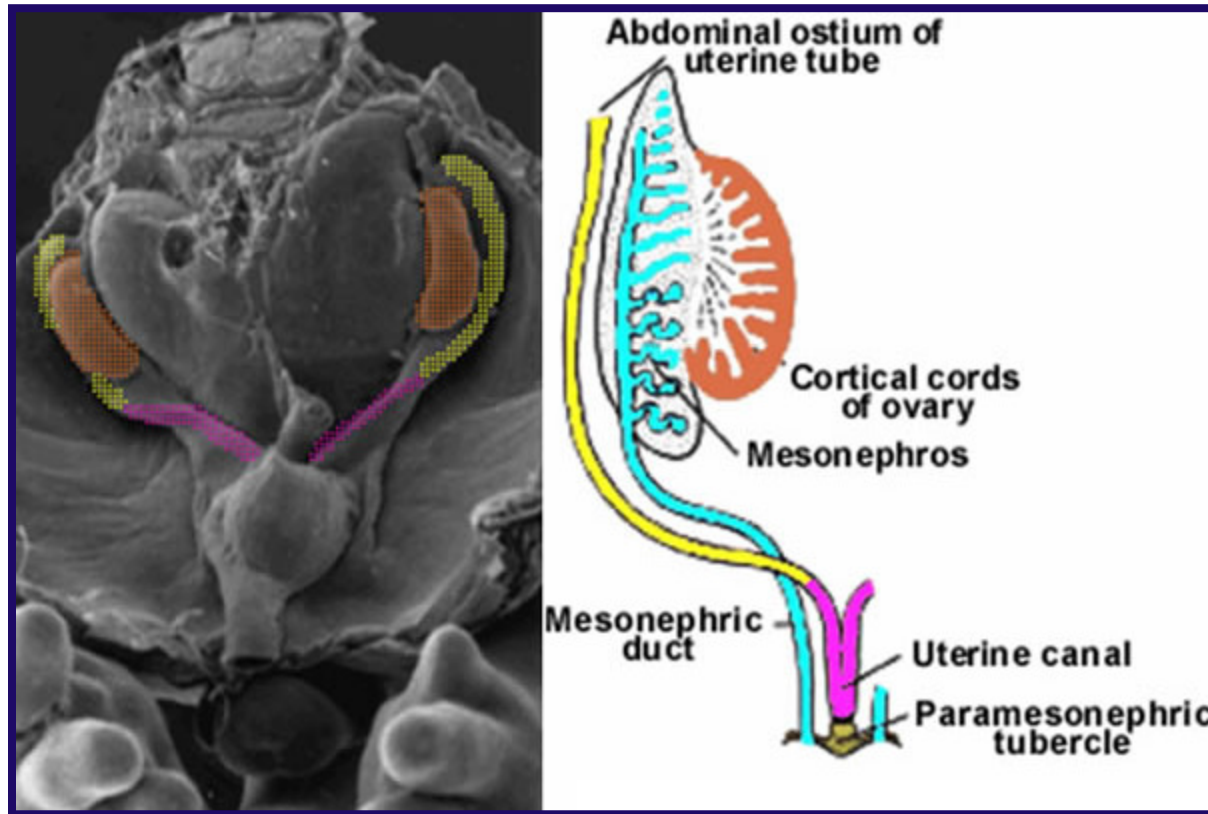
# Diferenciación en sentido masculino

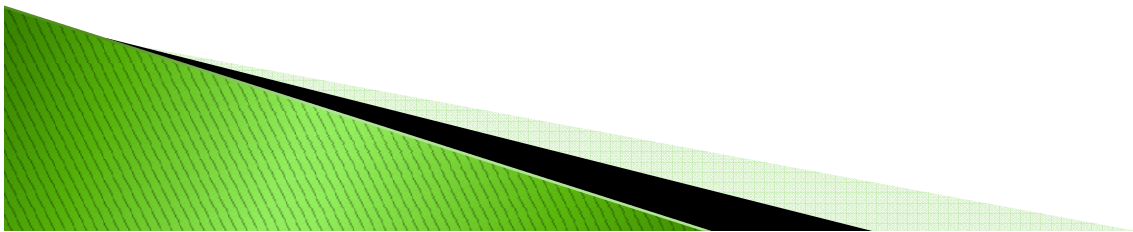
## Differentiation in male sense



# Diferenciación en sentido femenino

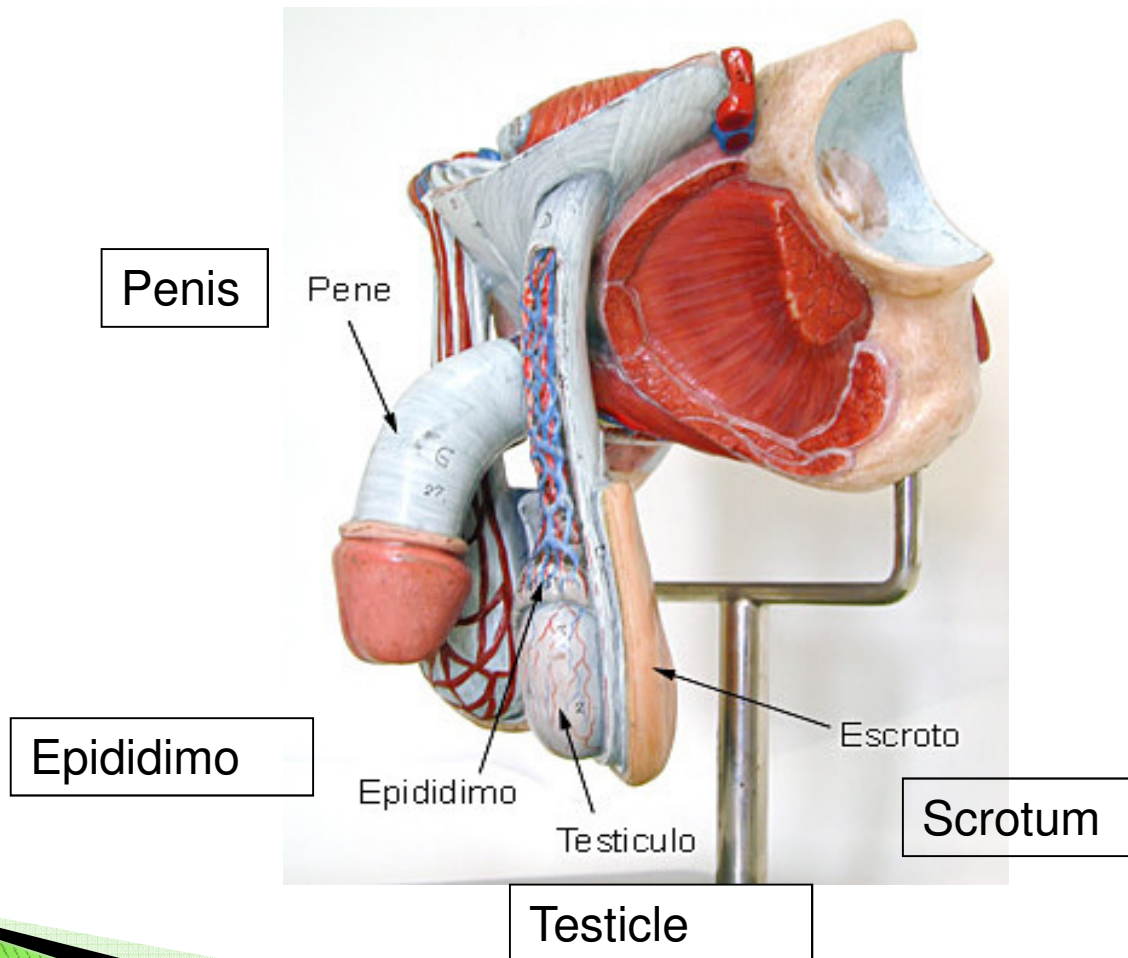
## Differentiation in female sense





# Aparato reproductor masculino

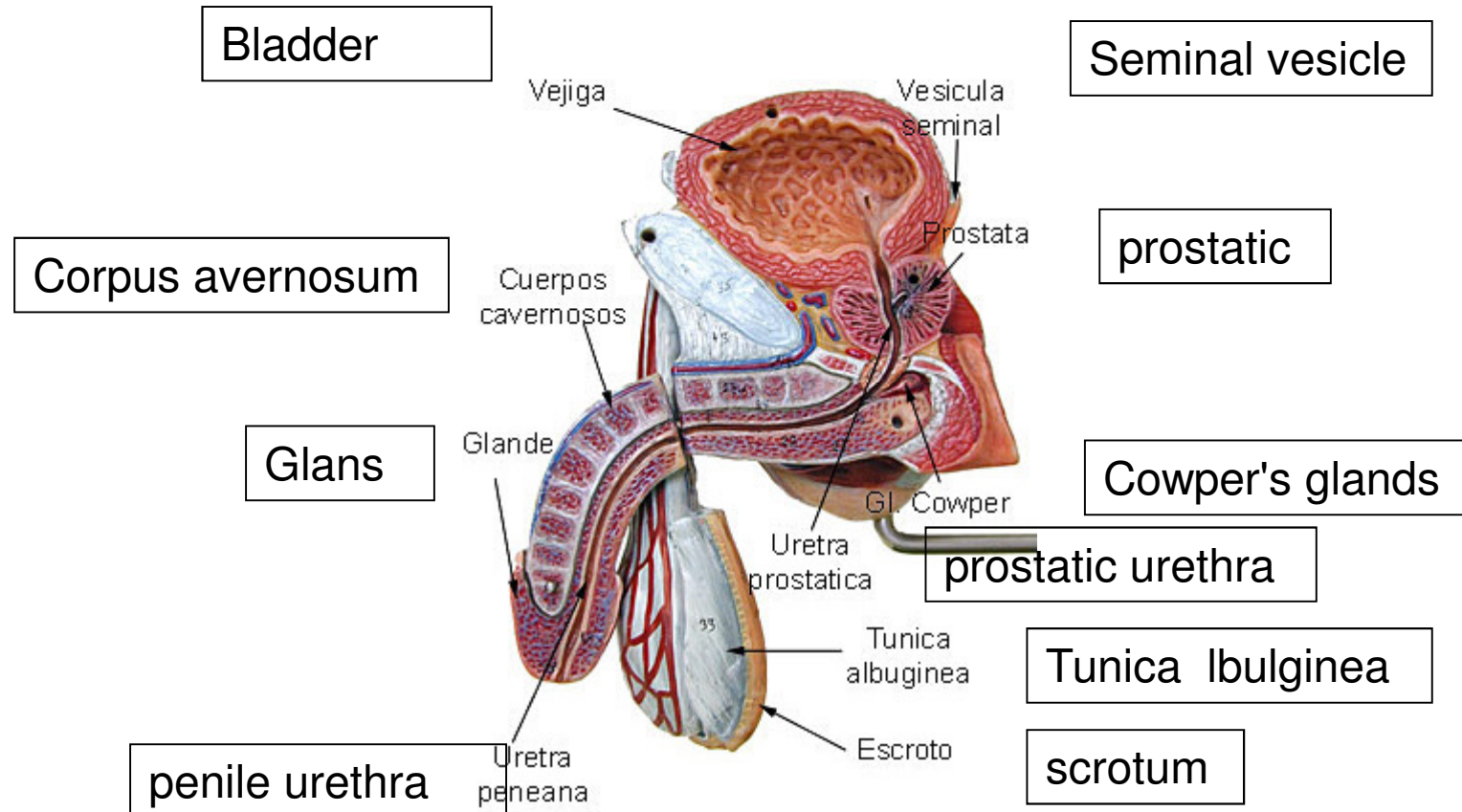
## Male reproductive system



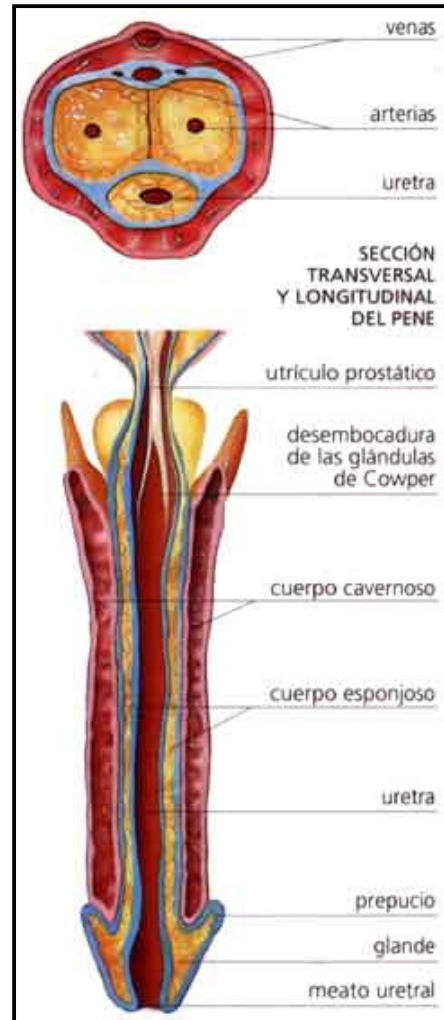


# Aparato reproductor masculino

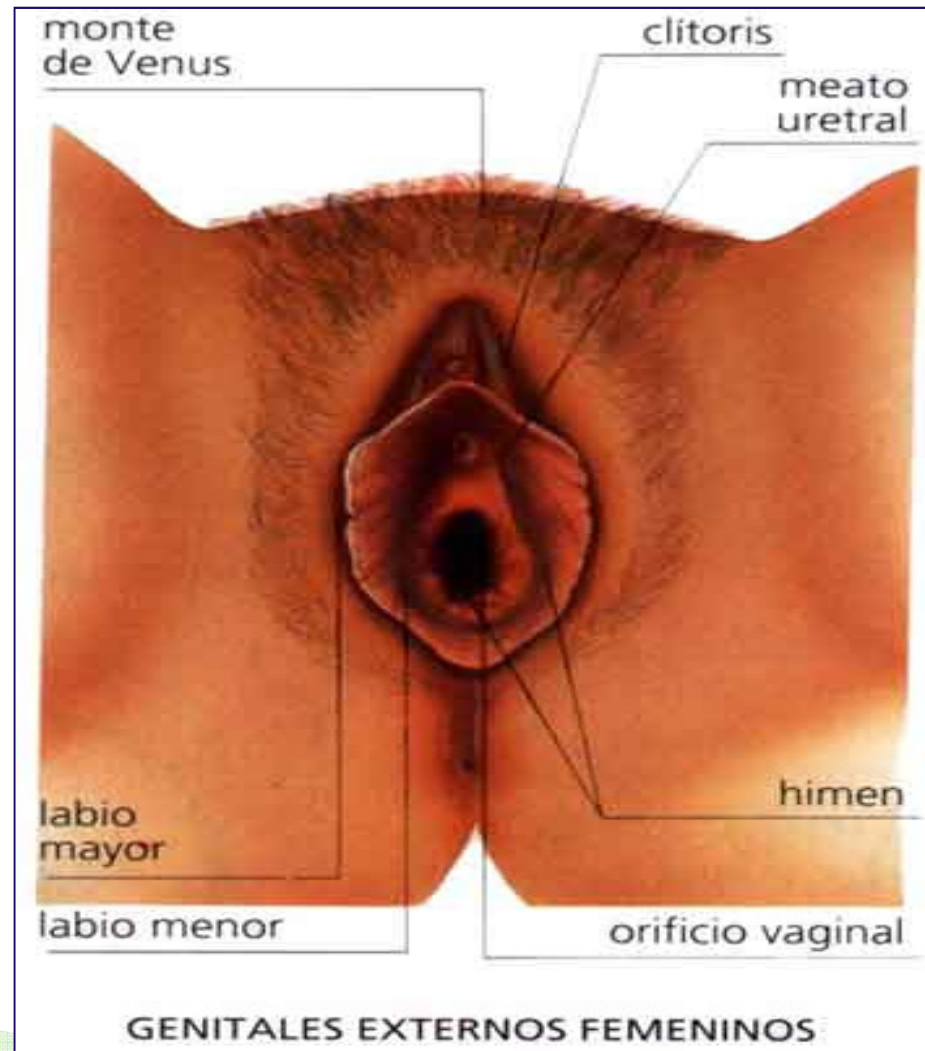
## Male reproductive system



# El Pene

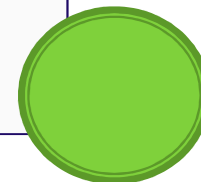
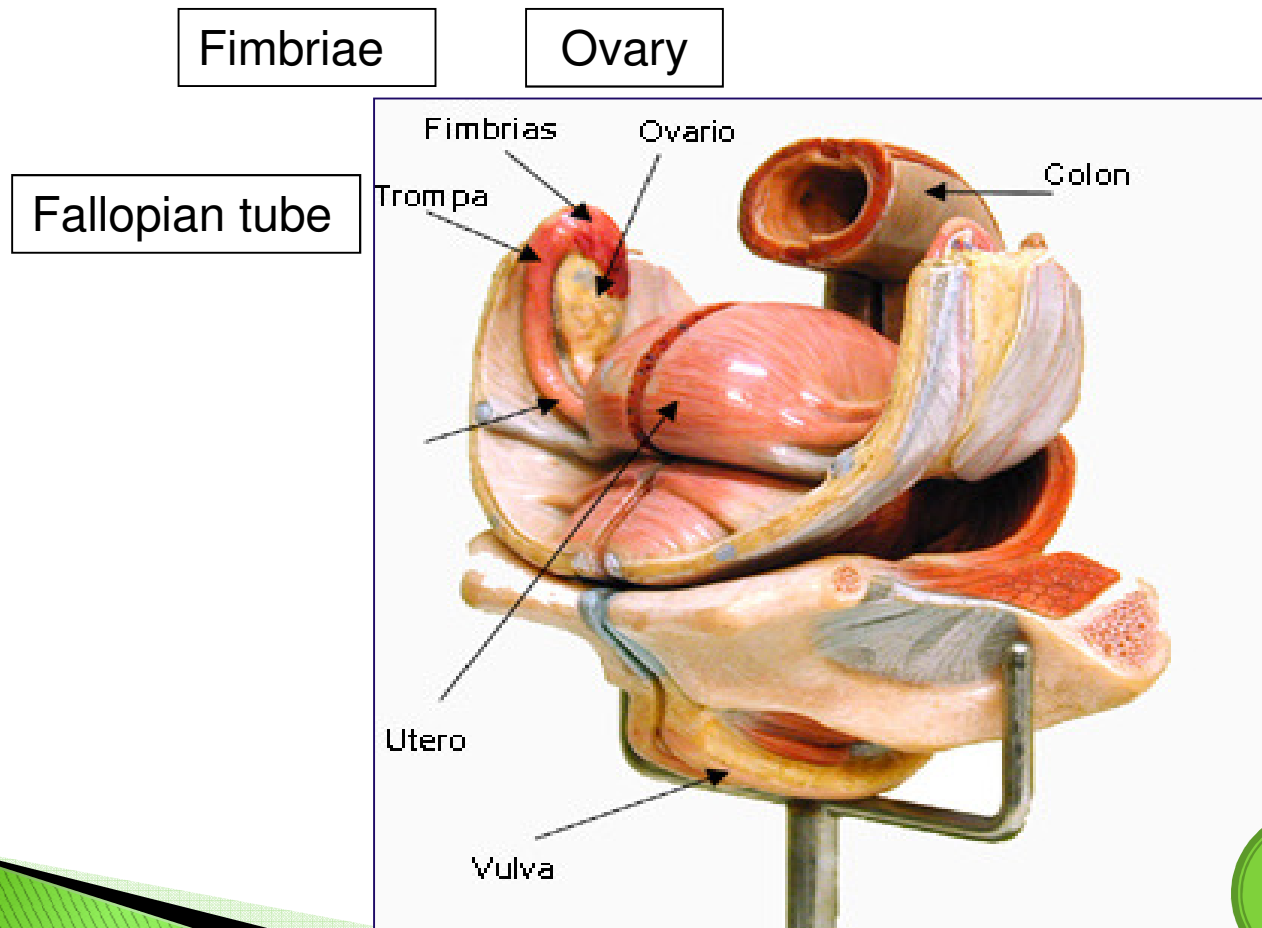


# Genitales externos femeninos



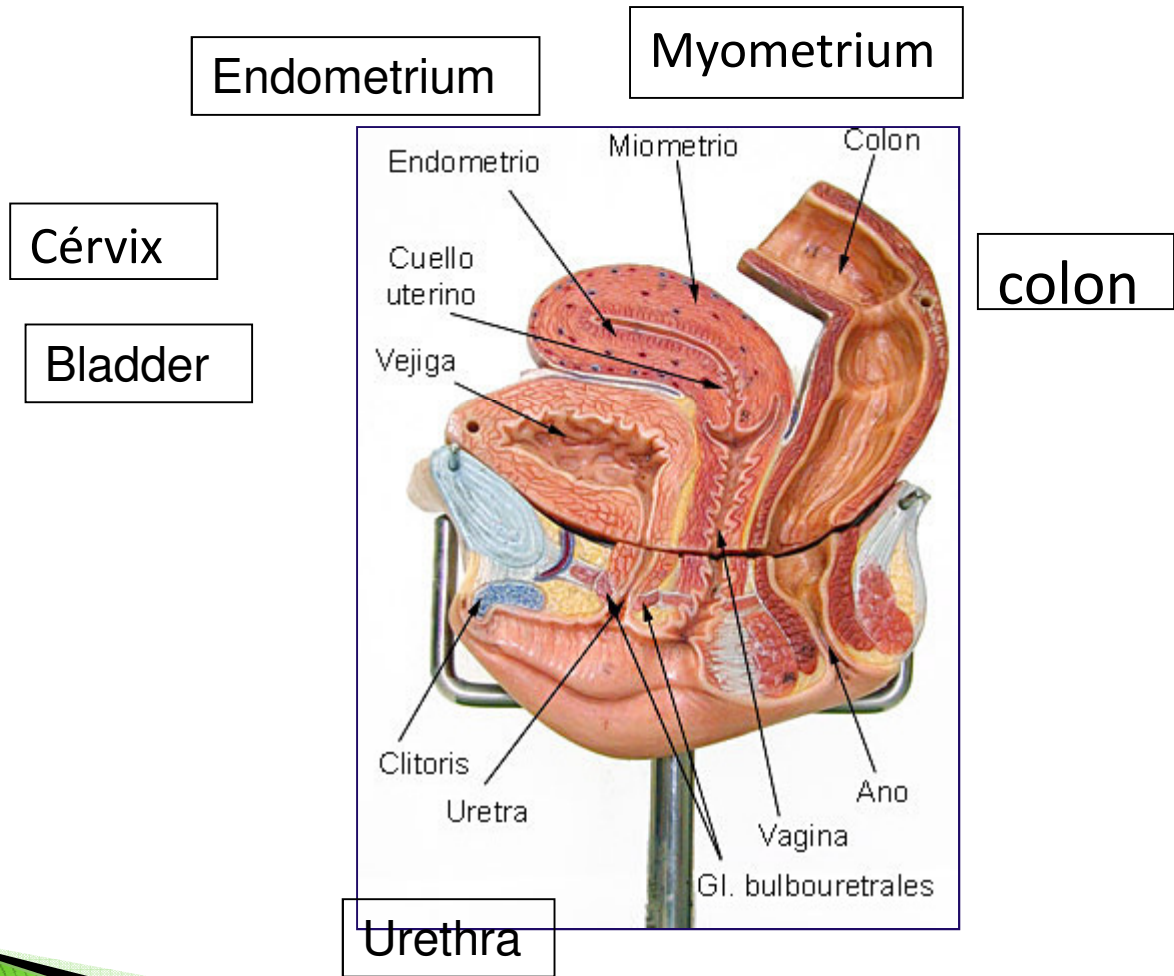
# Órganos internos femenino

## internal female organs

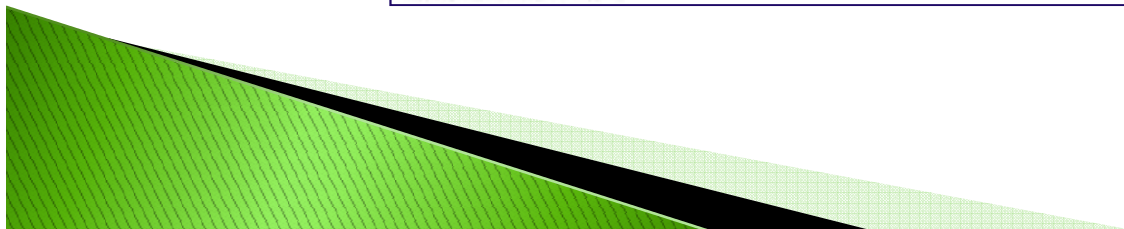
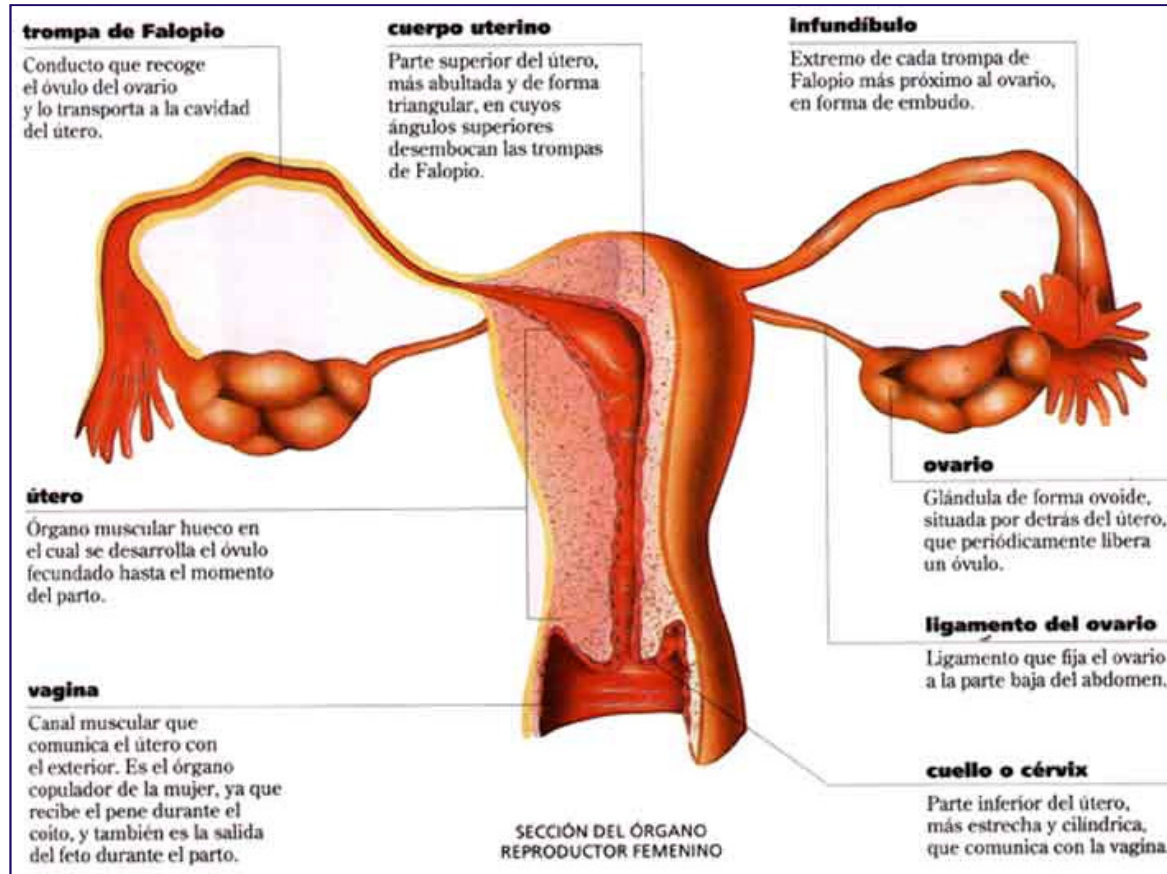


# Órganos femenino internos

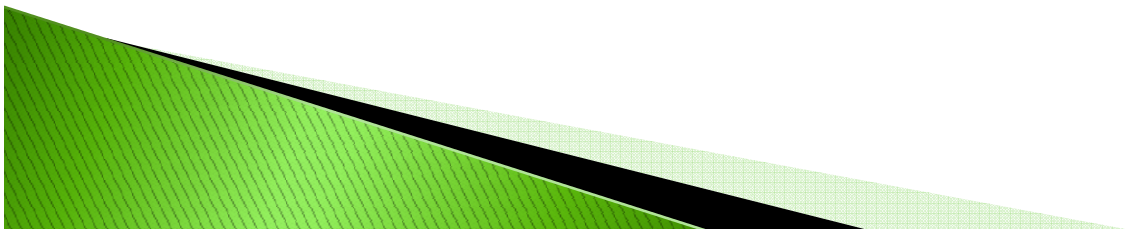
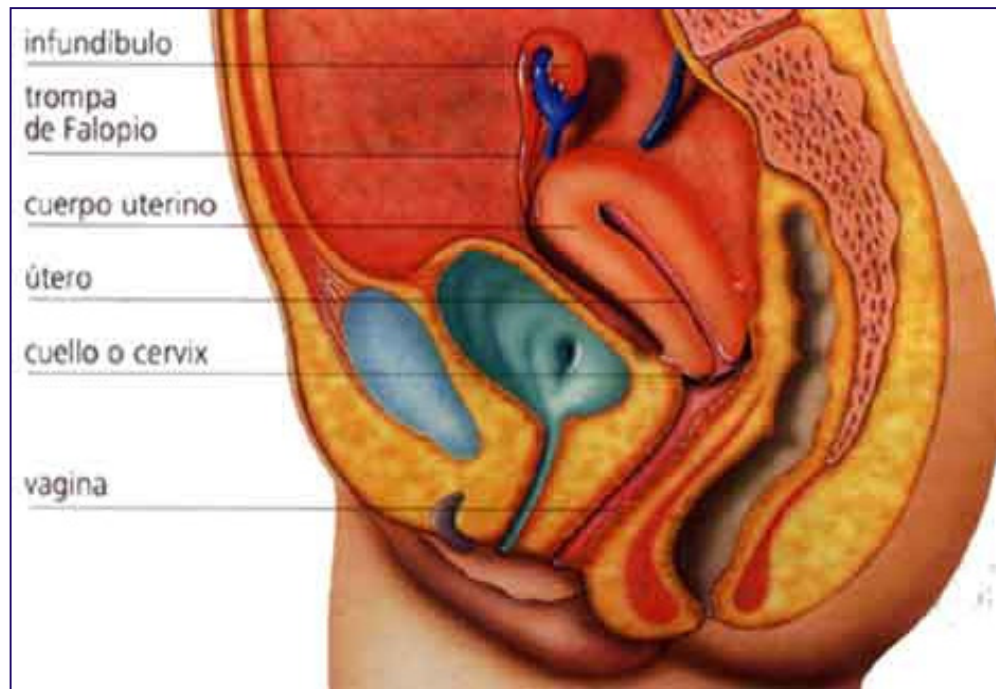
## internal female organs



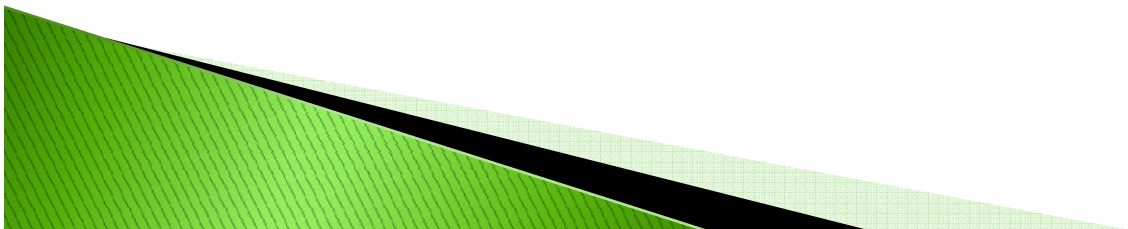
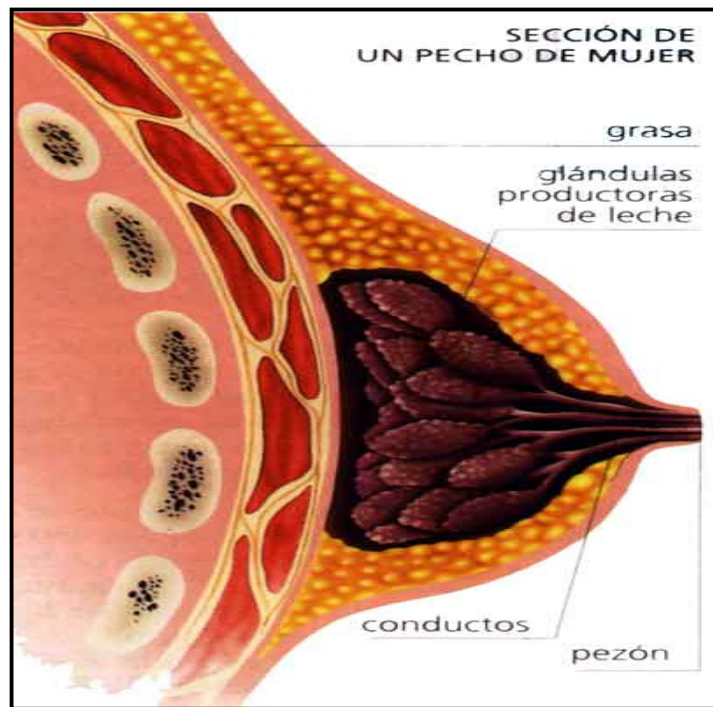
# Genitales Internos



# Genitales internos Femeninos

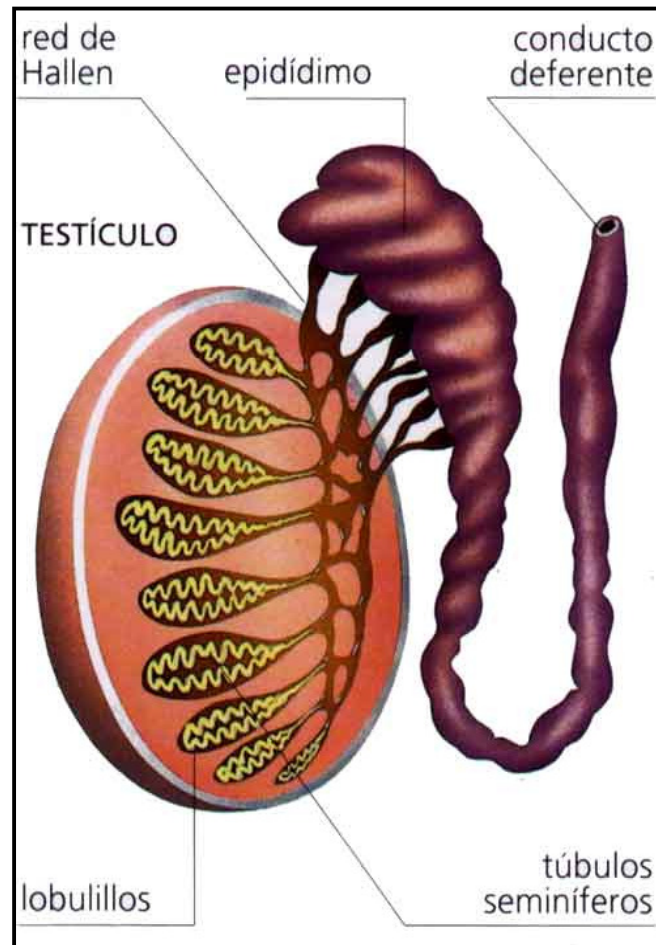


# Las mamas

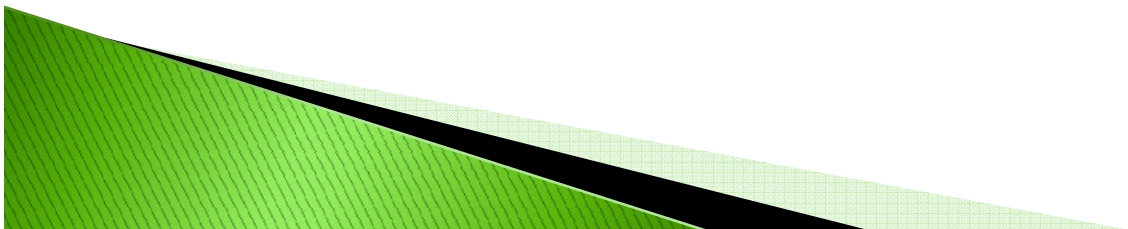
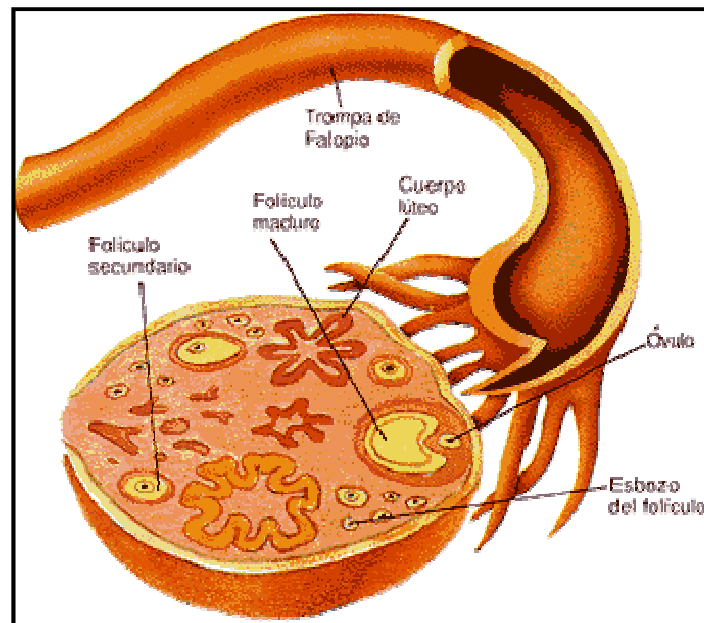




# El Testículo

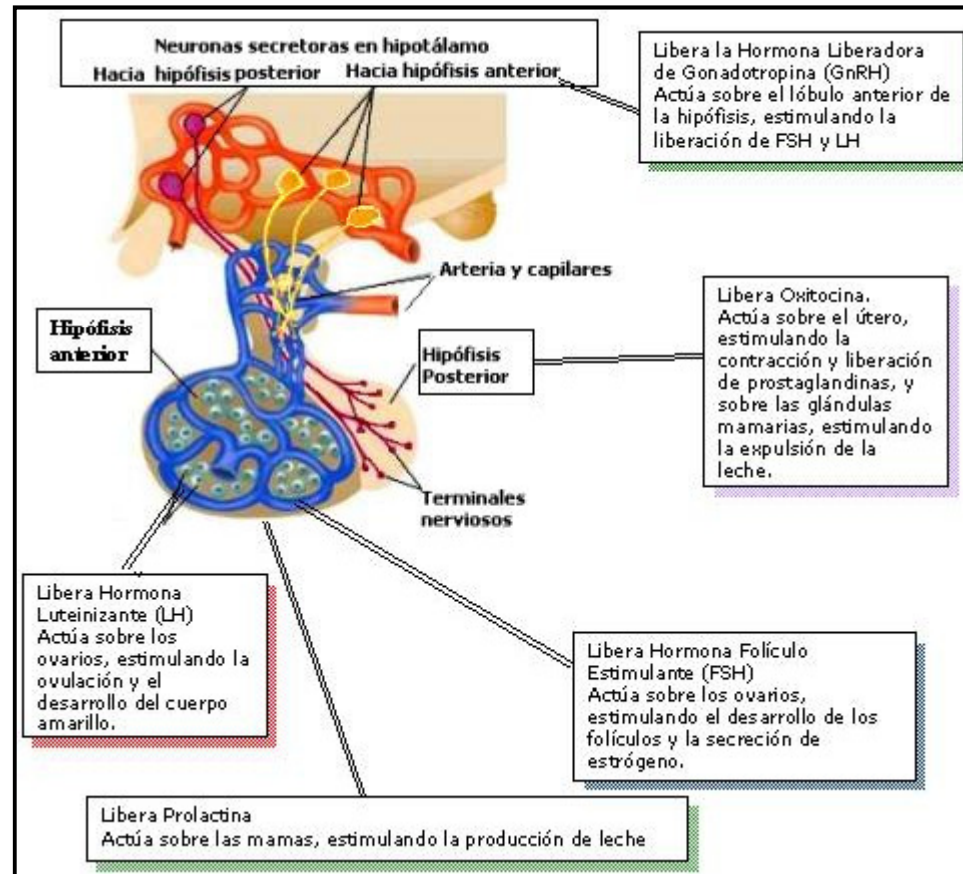


# Ovario

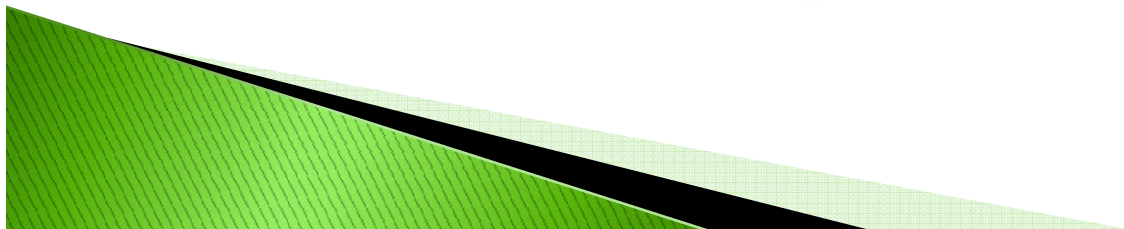
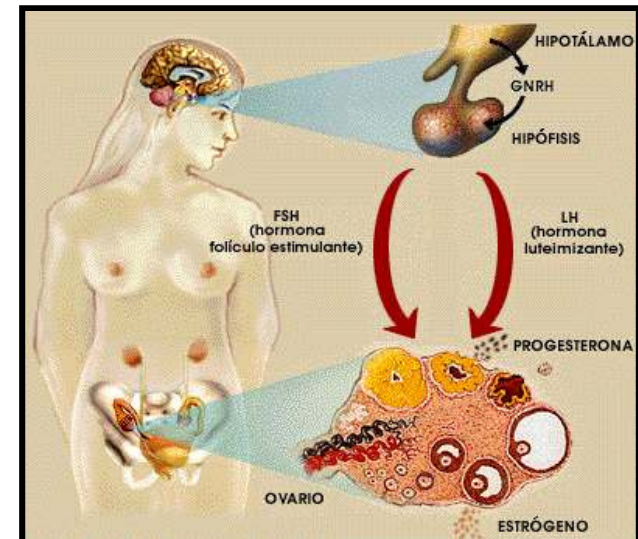
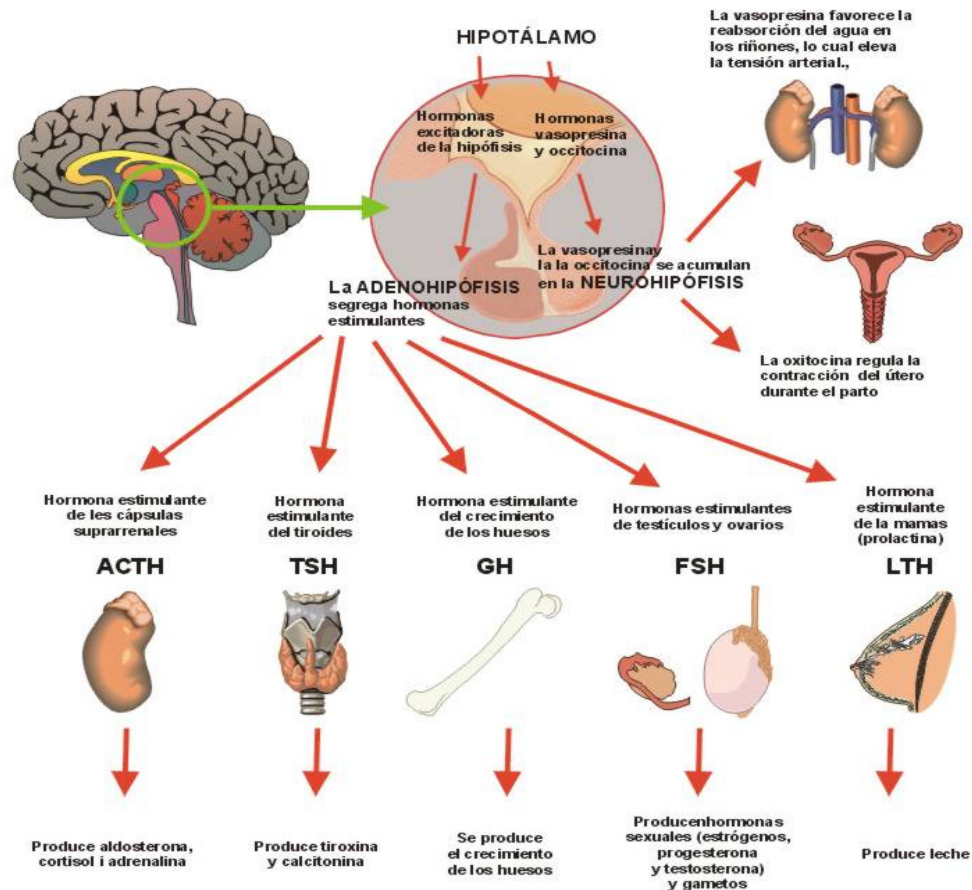


# Fisiología del Inicio

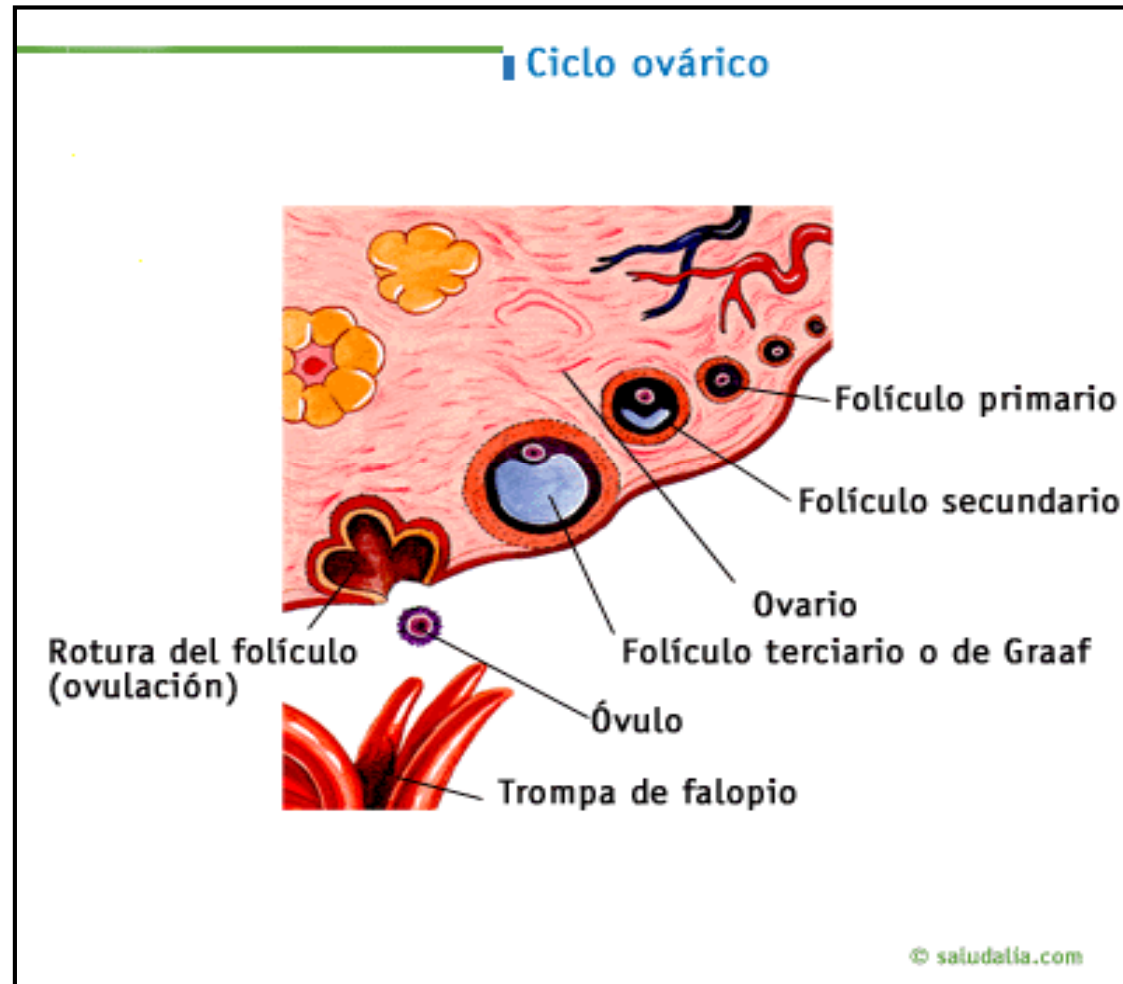
## Physiology Home



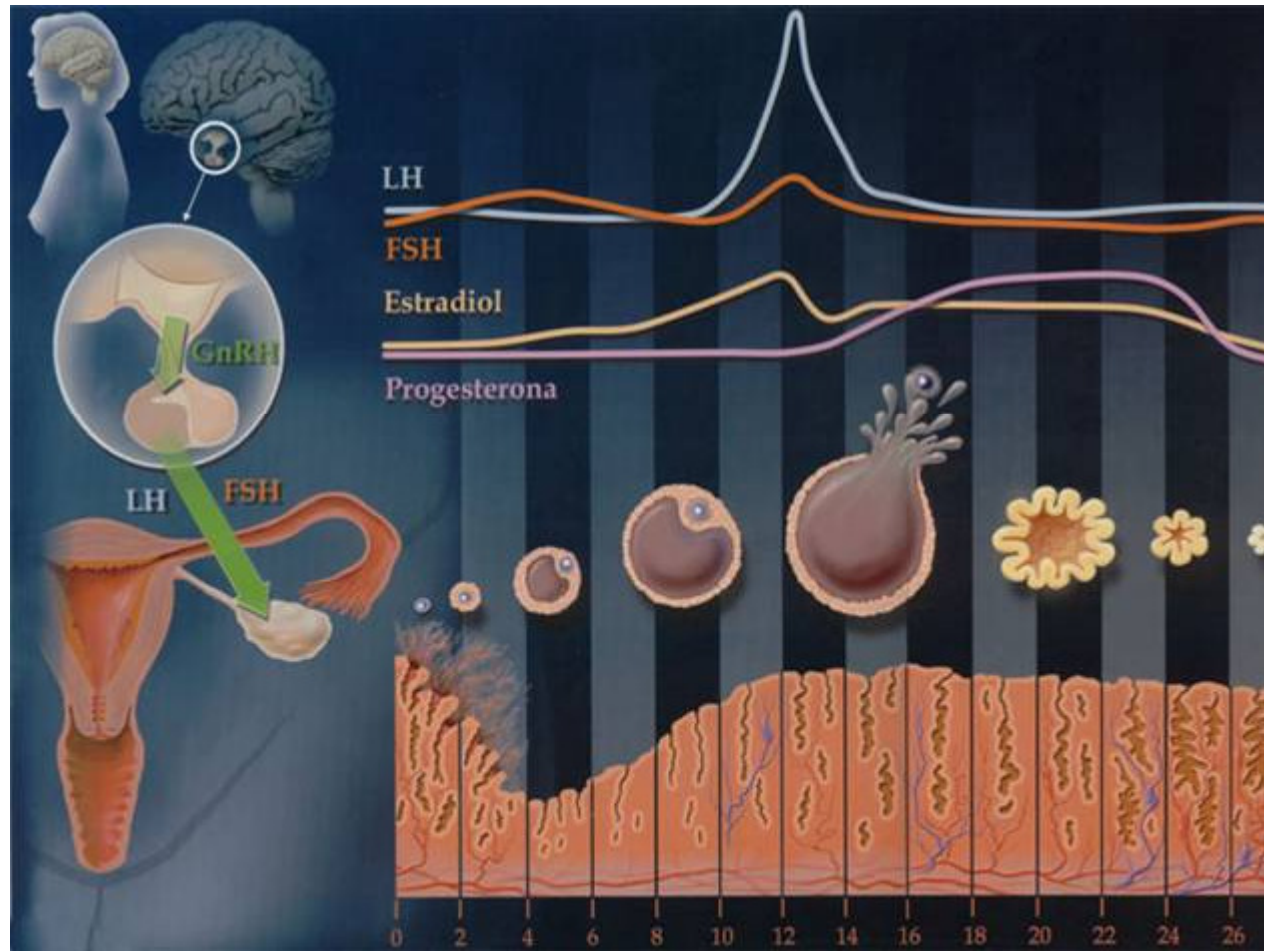
# Eje hipotálamo-hipofisiario



# Ciclo ovárico

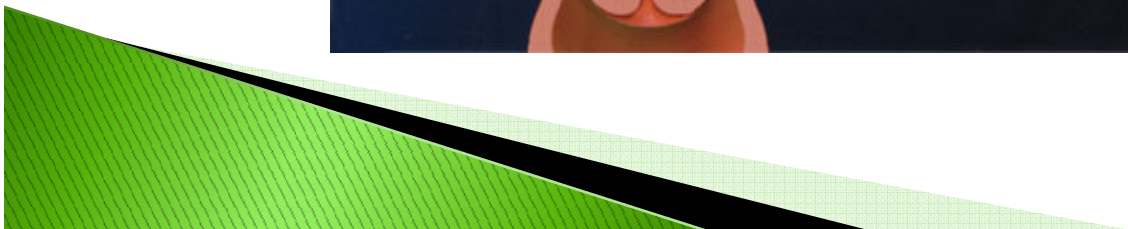
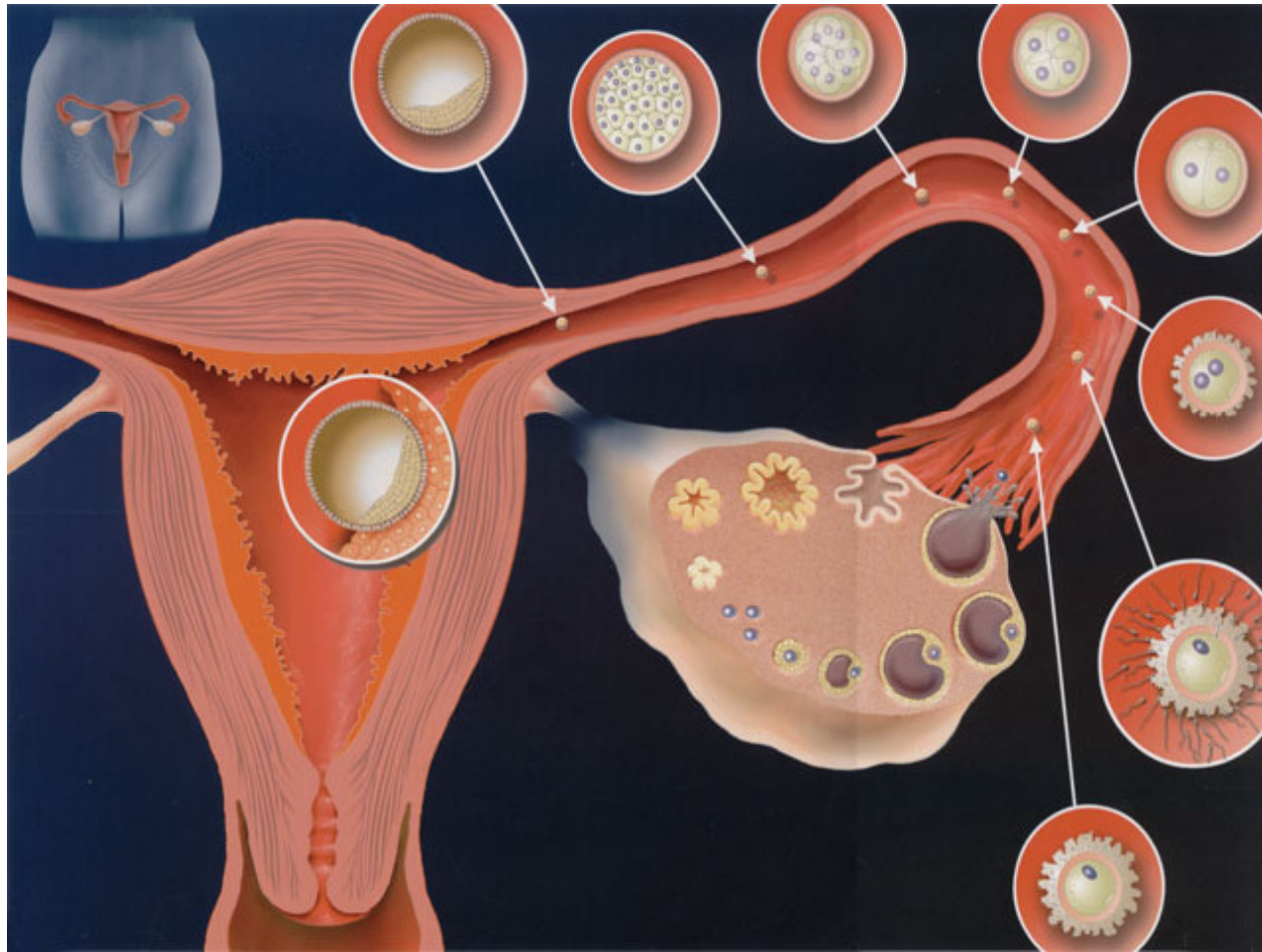


# Ciclo ovulatorio

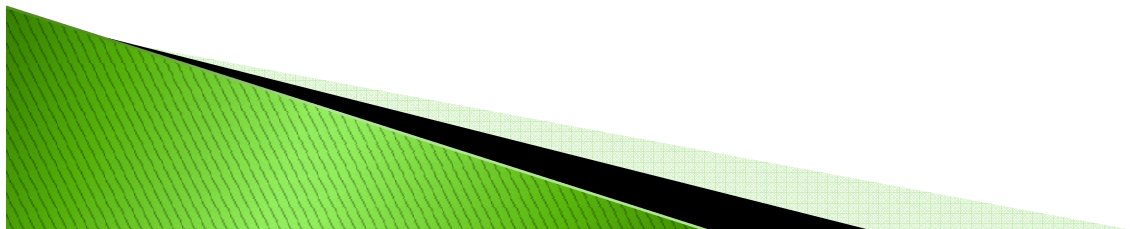
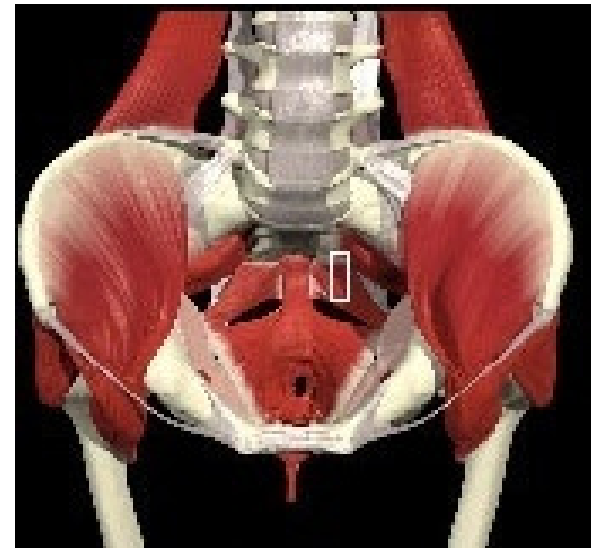
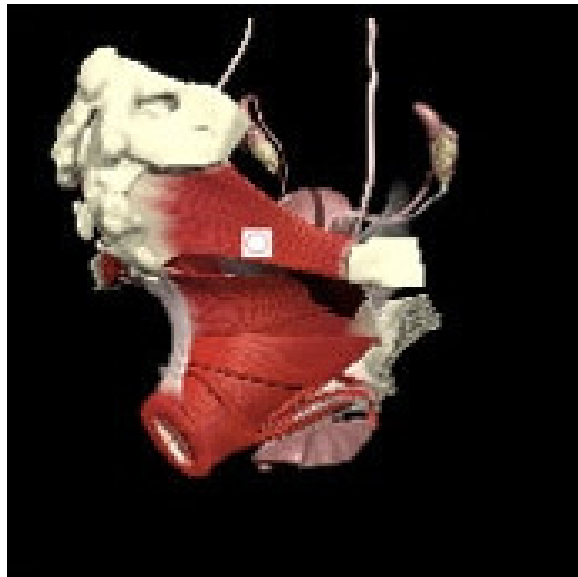


# Ciclo ovárico

## Ovarian Cycle



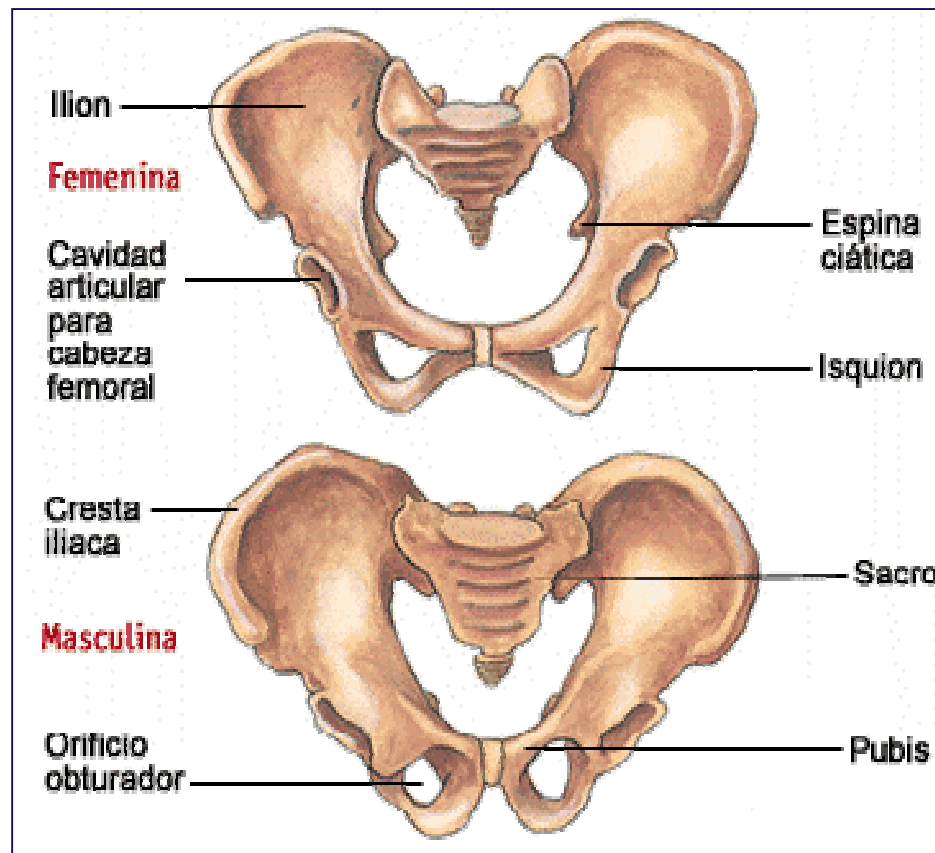
# Contrasta la fuerza de gravedad Gravity contrasts.



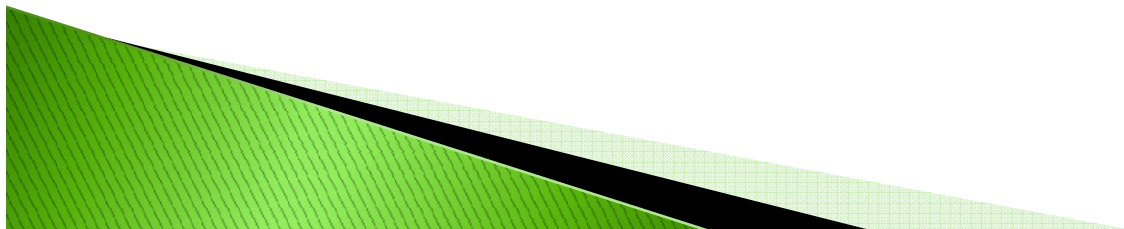
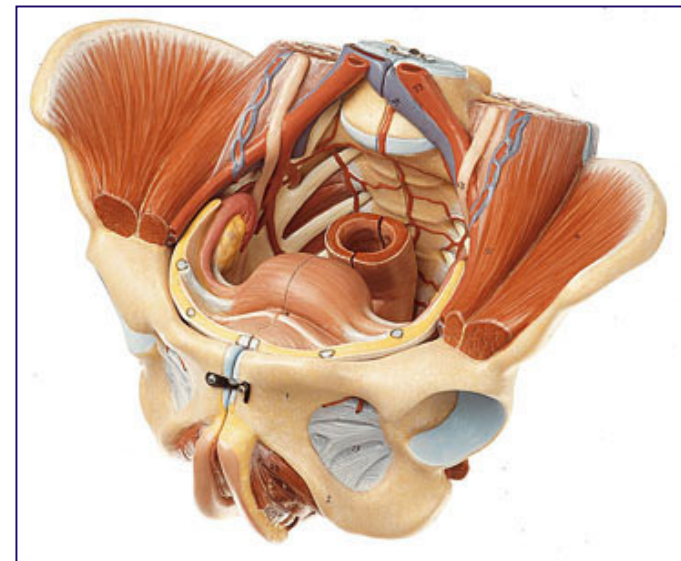
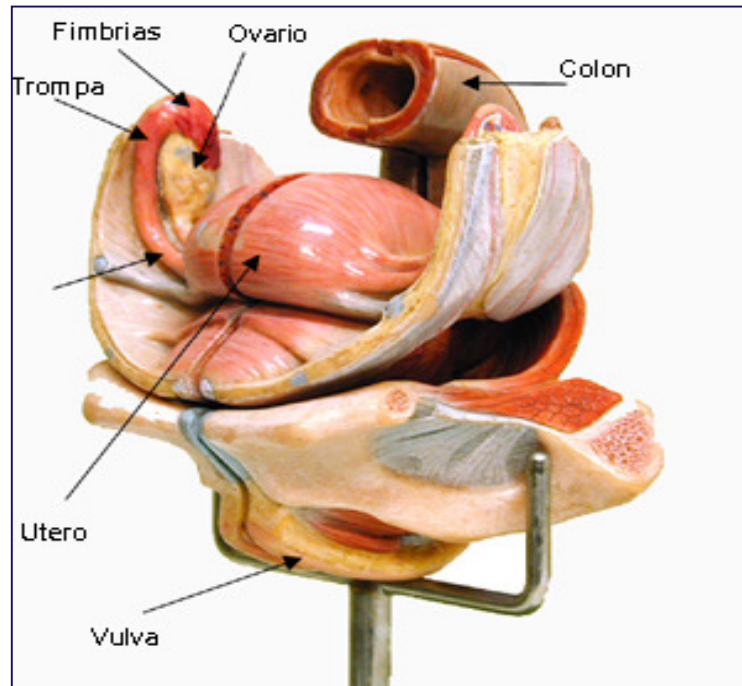


# Diferencia entre la pelvis masculina y femenina

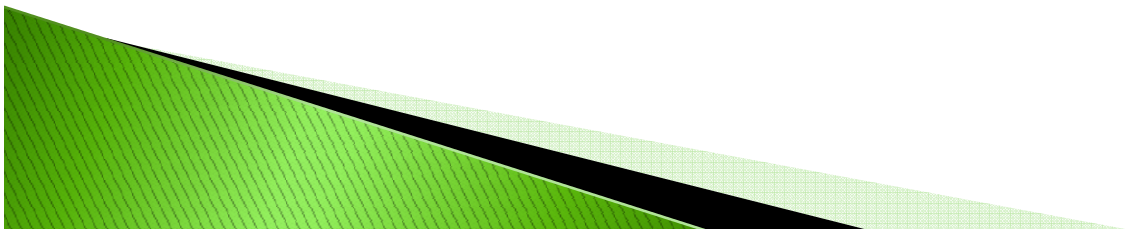
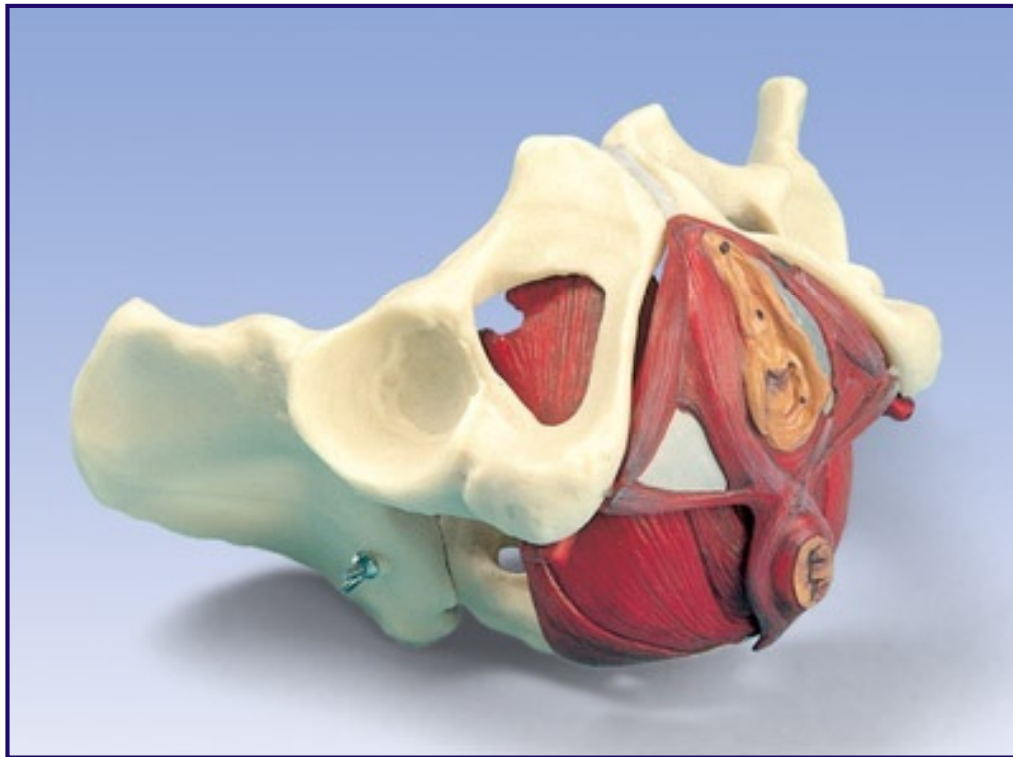
## Difference between male and female pelvis

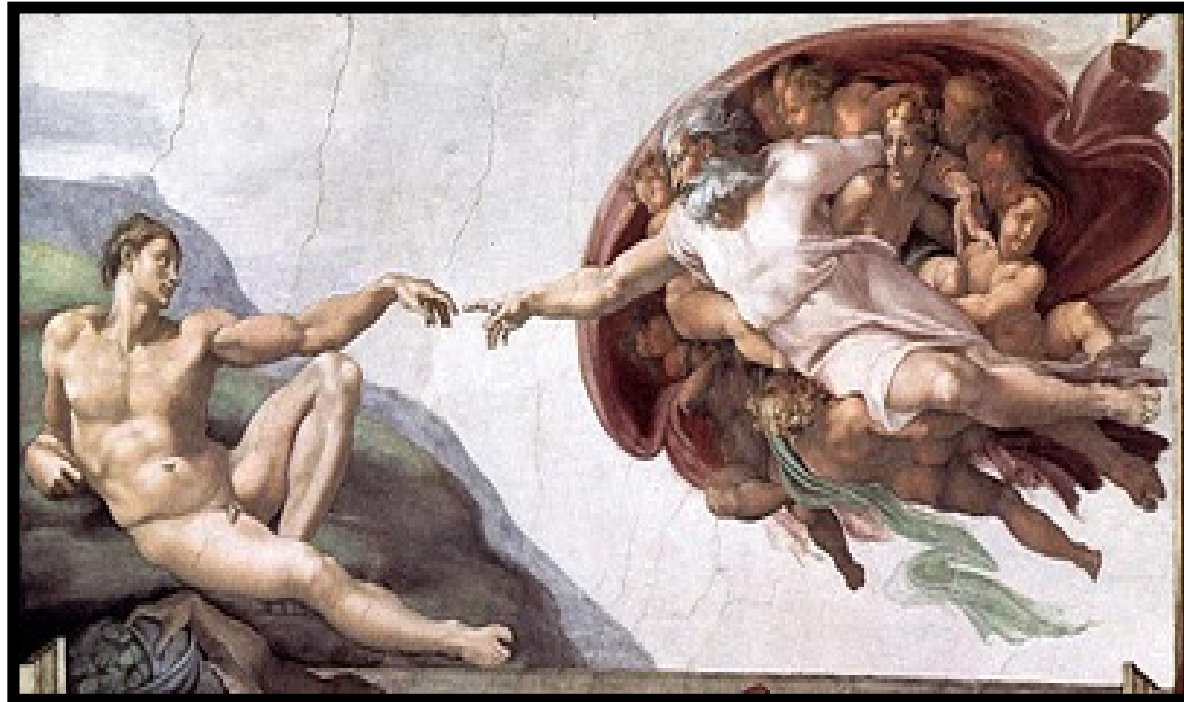


# Contenido de la Pelvis



# Músculos de la pelvis





**Gracias**

